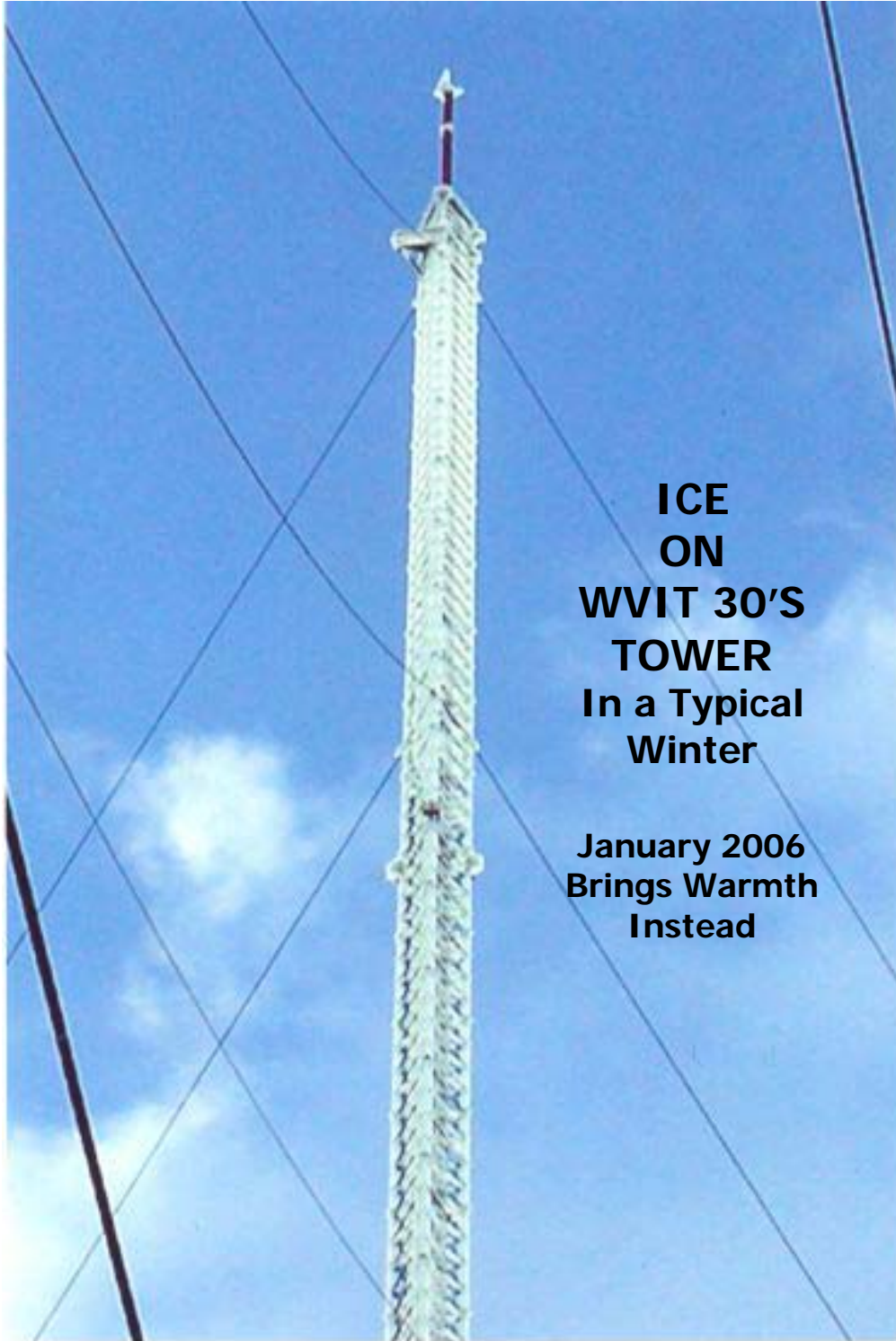


# Vhi-UhiDIGEST

The Official Publication of the Worldwide TV-FM DX Association

FEBRUARY 2006

The Magazine for TV and FM DXers



**ICE  
ON  
WVIT 30'S  
TOWER  
In a Typical  
Winter**

**January 2006  
Brings Warmth  
Instead**



## **HD RADIO STALLS IN CANADA**

CRTC considers IBOC as a possible substitute.

## **WLNY Ch 55 RIVERHEAD NY GOES DARK**

Station goes all digital on ch57 in early January.

*TV and FM DXing was never so much fun!*

# THE WORLDWIDE TV-FM DX ASSOCIATION

*Serving the UHF-VHF Enthusiast*

THE VHF-UHF DIGEST IS THE OFFICIAL PUBLICATION OF THE WORLDWIDE TV-FM DX ASSOCIATION DEDICATED TO THE OBSERVATION AND STUDY OF THE PROPAGATION OF LONG DISTANCE TELEVISION AND FM BROADCASTING SIGNALS AT VHF AND UHF. WTFDA IS GOVERNED BY A BOARD OF DIRECTORS: DOUG SMITH, GREG CONIGLIO, BRUCE HALL, KEITH MCGINNIS AND MIKE BUGAJ.



*Editor and publisher: Mike Bugaj*  
*Treasurer: Keith McGinnis* Webmaster: **Tim McVey**  
*Editorial Staff: Dave Williams, George W. Jensen, Jeff Kruszka*  
**Keith McGinnis, Fred Nordquist, Matt Sittel, Doug Smith,**  
**Chris Kadlec, Peter Baskind and John Zondlo,**  
Our website: [www.anarc.org/wtfda](http://www.anarc.org/wtfda) Our forums: [www.wtfda.info](http://www.wtfda.info)

**FEBRUARY 2006**



Finally! For those of you online with an email address, we now offer a quick, convenient and secure way to join or renew your membership in the WTFDA from our page at:

<http://fmdx.usclargo.com/join.html>

Dues are \$25 if paid to our Paypal account. But of course you can always renew by check or money order for the usual price of just \$24. Either way, it's still a bargain!

## VUDS ON A CD!

Every VUD from Jan 1980 to December 1989 is on this disk. You'll need Adobe Reader to read them. Why have a box of old VUDs taking up space when you can have this. **It's yours for just \$8.00 per disk.** Send your check or money order for \$8.00 to WTFDA, P.O. 501, Somersville, CT 06072. Make it payable to **WTFDA.**



## CONTENTS

Page Two	2
Mailbox	3
TV News...Doug Smith	4
FM News...Chris Kadlec	10
Photo News...Jeff Kruszka	16
Eastern TVDX...Matt Sittel	19
Satellite News...George Jensen	20
Western TVDX...Dave Williams	21
FM DX North...Keith McGinnis	24
6 meters...Peter Baskind	29
Editors/Submissions	31

## And now... **eVUDS ON CD!**

All eVUDs from 09/01 through 12/05 are on this disc (except 8/02 which was not published). Follow the changes from day one to the present form. **You can have it for just \$6.00** (\$5.00 plus a dollar shipping). Use the same address as for VUDs on CD shown on the opposite column. Have a great February!



## THE WTFDA FORUMS AT

<http://www.wtfda.info>

This is the newest addition to WTFDA on the internet. The forums consist of a series of public forums for all TV and FM Dxers *plus* four forums just for WTFDA members in the Members-Only Forum. Register yourself and go take a look. It costs you **nothing** ! And while you're there, look at the latest eVUD!

## THE WTFDA EMAIL LIST AT WTFDA.INFO

Due to popular demand, we've moved the list from Topica to the forums. The emails fly faster and you get subscribed faster! Just send an email to [tvfmdx-subscribe@wtfda.info](mailto:tvfmdx-subscribe@wtfda.info) to be added to the list quickly. If you've had problems with Topica before, try us now and come onboard. Read on the web or by emails. Your choice!



# The Mailbox

P.O. Box 501, Somersville, CT USA 06072  
MIKE BUGAJ MBUGAJ@SNET.NET

---

## WINTER DOLDRUMS?

It's February, and here we are, stuck in the middle of winter. But there's DX out there although you have to dig to find it.

If you want tropo, you'll have to DX down in the southern states. Doug and Peter had some intense tropo on the 1<sup>st</sup>. Steve, Jeff and Randy saw some gulf tropo on the 2<sup>nd</sup>. Peter and Randy saw Es to Mexico on the 5<sup>th</sup>. Randy found strong tropo to FL on the 7<sup>th</sup> and then to his north of the 12<sup>th</sup>. Again Randy and Peter had Es to their west on the 13<sup>th</sup>. Es continued on the 15<sup>th</sup> with both southerners and northerners seeing it, although up north it stuck at channel 2. And then, for some unexplained reason, Es hit into FM for Keith and Jeff in MA for a short time on the afternoon of the 16<sup>th</sup>.

And then there were the Quadrantids, which netted some new loggings for DXers in the beginning of January.

And you thought nothing happens in January. Well, for some of us, nothing does happen but as you can see above, it *does* happen for a few people in spite of winter.

By the way, all this information came from the archives of the tvfmdx list. There's a wealth of information there for all of us to see. All you have to do is subscribe to it and you'll find how elsewhere in this VUD.

## MEMBERS AND MORE

This month we say "welcome back" to **Doug McAbee**(MI) who left for a while but is now safely back in the fold. And we've received renewals from **Eldon Geiman**(PA), **Tom Bryant** (TN), **Girard Westerberg**(KY), **Chester Jaffee** (CA), **John Jefferson** (CA), **Dave Pomeroy** (KS), **Quentin Davis** (IN), **Lenny Goldberg** (OR), **Glen Hale** (IN), **Adam Rivers** (MA), **Russ Edmunds** (PA), **Melvyn Larson** (MN), **Dennis Elya** (MO), **Lawrence Marecki** (OH), **Jim Thomas** (CO) and **Jim Pizzi** (NY). Thank you folks for your support of the WTFDA.

## CLUB FINANCES PLUS

Let's talk about money. Did we get your attention? Thought so. Our treasurer, **Keith McGinnis**, has sent the board arguably the most detailed account of club finances ever

seen. I'm not going to print the spreadsheet here because I couldn't do it justice. And no, nobody is trying to hide anything. It's just the opposite. Instead of going over the fine points of the statement, we put the entire statement on the WTFDA Forums (<http://www.wtfda.info>) in the Members-Only section. If you register there you can go right in and examine it. Any WTFDA member can.

I took my calculator and came up with a few stats for you. Keith's statement begins with March, when we finally got squared away with Dave Janowiak's estate. Our ending balance for 2005 is about \$4300. In those nine months we spent \$90 on Mexican Guide printing, about \$1700 on TV Station Guide printing, just over \$3000 for VUD printing and about \$1600 for postage. Bear in mind that this is for nine months. If you want to go deeper into this, please examine the spreadsheet yourself. Register first and tell me so we can give you access. Remember that you will need MS Excel to view the spreadsheet. If you don't have Excel, either get it or find another program that opens Excel files (there are some free program available on the net.) Please don't ask me to make copies and send them to you.

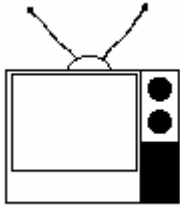
We are only half sold out of the TV Station Guide, so this month we've knocked down the price a bit to try to move them. The way it looks now, nobody is in a rush to publish another one soon. We probably should wait until much of analog television phases out before printing another guide. So, get it now while you can.

From **Doug McAbee** we read "I like that you now have an email news letter. Please send the newsletter by email to my address". That's not quite right. The eVUD is available at <http://www.wtfda.info> in the Members-Only section. Go there, register and take it at your leisure. This method is the easiest way to make the eVUD available to the entire membership without clogging inboxes.

Some January VUDs were received two weeks late. We have no idea why, but in the future think of the eVUD. It's never delayed in the mail. It never tears. It's always there.

If you know anyone who might be interested in the WTFDA, ask them for permission and send them an email with the eVUD attached. They might like it enough to join.

(Continued on page 23)



# TV News

Douglas E. Smith  
1389 Old Clarksville Pike  
Pleasant View, TN  
37146-8098  
[w9wi@w9wi.com](mailto:w9wi@w9wi.com)

<http://www.w9wi.com>

**February 2006**

## Abbreviations:

AF	Applied For (a new station)	NW	New station on the air
Aux	Auxiliary (backup) transmitter	PA	Proposed Amendment
CC	Callsign change	PC	Power (and/or tower height) change on the air
CL	City-of-license change	PG	Power change granted
DC	Converted to DTV	PR	Power change requested
DG	Granted flash-cut to DTV	QC	Channel (?frequency??) change on the air
DE	License/permit deleted	QG	Channel change granted
DR	Requests flash-cut to DTV	QR	Channel change requested
FC	Programming (?format??) change	RE	Reinstated (previously-dismissed app.)
FTP	Failure to Prosecute	ROA	Request of Applicant
GA	Granted amendment (to table of channel allotments)	SI	Off the air (?silent??)
LC	License to Cover	STA	Special Temporary Authority
MX	Mutually Exclusive	XC	Transmitter site changed
NDA	Non-directional antenna	XG	Transmitter site change granted
NS	Permit granted for new station	XR	Transmitter site change requested

## News:

(full-power analog stations in **bold face**; LPTV and translators in regular type; full-power digital stations in **bold italics**; low-power digital stations in regular italics)



## Canada:

### British Columbia:

Victoria 21 CHNU-TV-1 PR>17kw

### Manitoba:

Winnipeg 35 CIIT-TV PG>, new facilities not given



## Guam:

Agana 28, K28HS, FC; sold by TBN  
30, K30HB,  
32, K32GB,  
36 K36GJ



## USA:

### Alabama:

Birmingham 47 W62CK QR from ch. 62, CL from Acton, TN dismissed

Hamilton 24 W24DC NW 22.6kw, 34-02-22/87-57-03

Huntsville 25 WHIQ **XC 34-44-13/86-31-45 (correction only)**

Huntsville 39 W54BU QR from ch. 54, CL from Jackson, TN dismissed

Montgomery 42 W45BL QR from ch. 45, CL from Colquitt, GA dismissed

### Alaska:

Juneau 15 KCBJ-LP PR<800w; PG; PC  
Sitka 25 K25IQ NS 14kw, 57-02-51 /135-20-28 (KYES-5)

## Arizona:

Concho 10 KWKM-LP CC from K100Z  
Flagstaff 51 KWTF-LP CC from K51IT  
Holbrook 39 KPHZ **QR from ch. 11, 1070kw/491m, 33-20-01/112-03-45 (see text)**

Phoenix 11 KDTP **QR from ch. 39, 1.6kw, 34-55-05/ 110-08-25 (see text)**

Phoenix 22 KTVP-LP QC from ch. 56, 42kw, 33-19-58/ 112-03-59

**Phoenix 31 KSAZ-DT NW 87.7kw/473m (aux)**

Phoenix 42 KVPA-LP CC from K42FD  
Phoenix 43 KEJR-LP CC from KQBN-LP  
Phoenix 48 KDRX-CA FC; sold to Daystar (to translate KDTP-11 once it moves from ch. 39 Phoenix to ch. 11 Holbrook)

Prescott 28 KQBN-LP CC from K28FF  
Prescott 43 K55DB QR from ch. 55, 1.19kw

Yuma 6 KVFA-LP CC from K06OD

## Arkansas:

Conway 29 K61FP QR from ch. 61, CL from Batesville dismissed

Fayetteville 35 K22ES QR from ch. 22, CL from Batesville dismissed

Fort Smith 26 K55HU QR from ch. 55, CL from Joplin, MO dismissed

Fort Smith 33 K33HE QC from K52FJ, 23.2kw, 35-18-09/ 93-

Little Rock	9	KZJG-LP	45-40 QC from ch. 13, 1.5kw, 34-44-38/ 92- 16-32				1.4kw, 33-50-32/ 116- 49-26 dismissed; going for ch. 8 instead
Little Rock	40	K36DR	QR from ch. 36, CL from El Dorado, AR dismissed	Palm Springs	40	K66BM	QC from ch. 66, 45.6kw
Little Rock	46	KLRA-LP	PR< to move antenna 17m lower; QG from ch. 58	Redding	2	KMCA-LP	PG>550w, 40-33-46/ 122-27-07
Little Rock	48	K27FF	QR from ch. 27, CL from El Dorado, AR dismissed	Redding	14	K59FW	PR>150kw, 40-39-06/ 122-31-32; CL from Eureka dismissed
Paragould	36	W64BZ	QR from ch. 64, CL from Jackson, TN dismissed	Riverside - Palm Springs	8	KSPP-LP	QR from ch. 29, 460w, 33-50-06/ 116-48-40; CL from Palm Springs
Searcy	43	K43IM	QC from K54GT, 150kw, 35-22-53/ 91- 31-30	Sacramento	26	K27FX	QR from ch. 27, CL from Eureka, CA dismissed
<b>California:</b> Altadena	69	KTAV-LP	PG>9.98kw, 34-13-36/ 118-03-57; CL from Lancaster	San Diego	41	KZSD-LP	CC from KZDF-LP
<b>Avalon</b>	47	<b>KAZA-DT</b>	<b>NW 335kw/913m</b> <b>(aux)</b>	Santa Barbara	8	K08MP	PR>3kw
<b>Avalon</b>	47	<b>KAZA-DT</b>	<b>NW 350kw/937m</b>	Simi Valley	55	K55KD	CL granted from Oxnard
<b>Avalon</b>	54	<b>KAZA-TV</b>	<b>NW 2290kw/913,</b> <b>34-13-35/</b> <b>118-03-58 (aux)</b>	<b>Colorado:</b> Anton	51	K51HS	NW 530w, 39-51-17/ 103-20-38
Bakersfield	19	KBBV-CA	CC from KAZB-CA	Aspen	20	KSZG-LP	PR, facilities unknown
Bakersfield	47	K47IA	PG<15kw, 35-26-18/ 118-44-21	Cripple Creek	30	K30IK	PC<500w, 39-25-39/ 104-51-60 (sic)
Bakersfield	53	K53IB	PR<2kw, 34-32-50/ 118-12-56	<b>Denver</b>	40	<b>KRMT-DT</b>	<b>NW 74.8kw/344m</b>
Banning	45	K45IC	PG 10kw	<b>Grand Junction</b>	18	<b>KRMJ</b>	<b>PG&lt;105kw/409m, 39- 03-58/ 108-44-43</b>
Caliente	12	KJOI-LP	XR 35-26-16/ 118-44-28	Loveland	45	K63AB	QR from ch. 63, 46.9kw, 40-38-31/ 104-49-05; CL from Estes Park dismissed
Cherry Valley	51	K51HZ	PR<5w (yes, 5 watts, not 5 kilowatts); PG	Pitkin	17	K17GC	NW 150w, 38-36-16/ 106-31-40
Chico	19	K53FT	QC from ch. 53, 20.5kw	<b>Connecticut:</b> Norwich	53	WEDN	PG<630kw/204m, 41- 31-14/72-10-03; PC
Clarks Crossing	48	K48IH	PG>40kw, 38-32-21/ 122-57-36	<b>Florida:</b> Fort Pierce	8	WFPI-LP	XR 27-26-08/ 80-21-40 dismissed
Eureka	2	K17EH	QR from ch. 17, 3kw, 40-43-36/123-58-27 dismissed; going for ch. 9 instead	Gainesville	27	W08DM	QR from ch. 8, CL from Colquitt, GA dismissed
Eureka	20	K20IP	QG from K52FK, 44.6kw, 40-43-36/ 123-58-27	<b>Jacksonville</b>	7	<b>WJCT</b>	<b>PC 270kw/302m, 30- 16-51/81-34-12</b>
Fresno	31	KGMC-LP	QC from ch. 22, 50kw	<b>Jacksonville</b>	38	<b>WJCT-DT</b>	<b>NW 1000kw/288, 30- 16-51/81-34-12</b>
Greenfield	40	KSCZ-LP	QR from ch. 42 dismissed ROA; PR<1.5kw, 36-36-43/ 121-03-50 on ch. 42 instead	Jacksonville	39	W30BO	PR>100kw, 30-16-53/81-34-15; CL from Colquitt, GA dismissed
Hemet	21	KDUG-LP	NS 5kw, 33-49-49/ 116-57-08 on ch. 51; QR to ch. 21; CC from K51IW	Key West	39	W39AC	PG>400w; PC
Hemet	51	K51IW	NS 5kw, 33-49-49/ 116-57-08	Key West	69	W69EI	PG>520w, 24-33-07/81-47-53
Oxnard	55	K55KD	PG<9.98kw, 34-14-38/ 118-40-23, CL from Simi Valley	Marathon	38,	W38AA,	PR>1.6kw (ch38)/ 170w (ch 63)/ 300w (ch. 65), 24-41-28/81-06-30; PG; PC
Palm Springs	7	KEQK-LP	CC from K07YH	Marathon	48	WDFL-LP	PR>12.2kw, 24-46-02/80-56-41; PG; NW; CC from W48DA
Palm Springs	31	KSHT-LP	CC from K31HU	Panama City	2	WPAF-LP	PR<130w, 30-10-44/85-46-55;
Palm Springs	39	KSPP-LP	QR from ch. 29,				

Pensacola	51 W46CK	NW QR from ch. 46, CL from Grenada, MS dismissed			from Houghton Lake, MI dismissed
St. Petersburg Venice	5 WMOR-LP 14 W56CN	QR from ch. 63, 3kw QR from ch. 56, 50kw, 27-07-58/ 82-23-41		<b>South Bend</b>  <i>South Bend</i> Terre Haute	<b>16 WNDU-TV</b>  <b>48 WHME-DT</b> 31 K58FD <b>AF 681kw/282m, 41-36-19/86-12-45 (aux)</b> <b>NW 300kw/295m</b> QR from ch. 58, CL from Cape Girardeau, MO dismissed
<b>Georgia:</b> Atlanta	31 W34BU	QR from ch. 34, CL from Acton, TN dismissed		<b>Iowa:</b> <b>Ames</b> Cedar Rapids	<b>34 KEFB</b> 24 W40BC <b>CC for NS</b> PR>150kw, 41-54-33/91-39-17; CL from Whiting, WI dismissed
Columbus	29 W36BT	QR from ch. 36, CL from Grenada, MS dismissed		Council Bluffs	30 K45EE QR from ch. 45, CL from Ottumwa dismissed
Macon	42 W69DO	QR from ch. 69, CL from Colquitt dismissed		Sioux City	5 KSXC-LP NW 3kw, 42-29-36/96-18-20
Pearson	3 WPNG-LP	NW 600w, 31-19-36/82-51-54		<b>Kansas:</b> <b>Hays</b> Pittsburg	<b>7 KBSH-TV</b> 33 K33HZ <b>PC&lt;112kw</b> PG>11.4kw, 37-23-39/94-46-14 PR>150kw, 37-45-02/97-18-13; CL from Joplin, MO dismissed
Savannah	46 WXSX-CA	QR from ch. 13, 150kw, 32-02-43/ 81-07-20; QG; QC		Wichita	17 K52FC
<b>Valdosta</b>	<b>44 WSWG</b>	<b>CC from WVAG</b>		<b>Kentucky:</b> Bowling Green	60, WKUW- 64 WKUT-LP PR>150kw, 36-57-37/86-32-49; CL from Glasgow
<b>Hawaii:</b> Hilo Kailua-Kona	5 KHHB-LP 47 KHIK-LP	CC from K05LD CC from K47IN		<b>Louisiana:</b> <b>Baton Rouge</b> Baton Rouge	<b>34 WVLA-DT</b> 38 K23DZ <b>NW 1000kw/522m</b> QR from ch. 23, CL from Alexandria dismissed
<b>Idaho:</b> Boise Boise/Nampa Caldwell Bonners Ferry Soda Springs	43 KIWB-LP 33 KBSE-LP 51 K51IN 33, K33HO, 35, K35HD, 39, K39GZ, 49, K49HU, 51 K51HM	PG>150kw PG>150kw QC from K27HA, 3kw NW 1.14kw, 42-37-48/111-41-00 (all five channels)		<b>Baton Rouge</b> Lake Charles	<b>45 WGMB-DT</b> 22 K22GT <b>NW 1000kw/424m</b> NW 9kw, 30-05-54/93-28-32 PR>150kw, 32-39-38/91-59-28; CL from El Dorado, AR dismissed
Twin Falls	53 K53IL	NW 150kw, 42-12-53/ 114-42-42		Monroe	34 K69HO PR>150kw, 32-39-38/91-59-28; CL from El Dorado, AR dismissed
<b>Illinois:</b> Carbondale	25 K65GP	QR from ch. 65, CL from Cape Girardeau, MO dismissed		Shreveport	19 K66EX PR>50kw, 32-30-32/93-44-35; CL from El Dorado, AR dismissed
<b>Carbondale</b> Chicago	<b>40 WSIU-DT</b> 30 W49BS	<b>NW 1000kw/271m</b> QR from ch. 49, CL from Quincy dismissed		Vidalia	44 W44CE PR>12.7kw; PG; CL from Natchez, MS
Chicago Effingham	41 WOCH-LP 41 WEIL-LP	QC from ch. 28, 25kw XR 39-57-03/ 88-52-05 dismissed		Winnfield	44 K44HN PR>63kw, 31-40-13/92-05-24; CL from Tullos; PG (KEJB-43)
Galesburg	50 W50BY	QR from ch. 51 (asks to surrender permit to move to ch. 53 or 51), correct coordinates to 40-56-43/ 90-20-39, remaining at existing power/site		<b>Maryland:</b> Ocean City	63 W63DC NW 200w, 38-24-59/75-03-24
Joliet	22 W65CZ	PR>100kw, 41-32-26/88-02-08; CL from Quincy dismissed		<b>Michigan:</b> Kalamazoo	36 WUHO-LP QC from ch. 57, 15kw, 42-16-28/ 85-39-12; CL from Pinconning
Rock Island	32 W24BV	PR>150kw, 41-32-49/90-28-35; CL from Whiting, WI dismissed		<b>Kalamazoo</b> <b>Muskegon</b> Pontiac	<b>45 WLLA-DT</b> <b>24 WTLJ-DT</b> 35 W50CA <b>NS 440kw/331m</b> <b>NW 280kw/281m</b> PR>49kw, 42-29-12/83-29-49; CL from Sault Ste. Marie dismissed
<b>Indiana:</b> <b>Bloomington</b> Fort Wayne	<b>56 WCLJ-DT</b> 50 W36CE	<b>NW 429kw/297m</b> PR>50kw, 41-06-13/85-11-28; CL from Houghton Lake, MI dismissed		Saginaw/ Midland	46 W46CR FC; sold to 3Abn
Lafayette	34 W57CQ	QR from ch. 57, CL			

<b>Minnesota:</b>			<b>Nevada:</b>		
St. Cloud	30 K30IN	PR>50kw, 45-35-48/94-09-25; CL from Royalton dismissed	<b>Ely</b>	<b>3 KVVV</b>	<b>CC from KBJN</b>
St. Cloud	47 K47IT	PR<7kw, 45-35-48/94-09-25; CL from Royalton dismissed	Reno	29 K69IE	QR from ch. 69, CL from Eureka, CA dismissed
St. James	32 K32GX-D	DC 40w, 44-06-25/ 94- 35-44	<b>New Hampshire:</b>		
St. Paul	17 KTCI-TV	XC 45-03-30/ 93-07-27, 393m (correction only)	Manchester	36 W54CG	QR from ch. 54, CL from Bangor, ME dismissed
Worthington	15 KSMN-DT	NW 200kw/290m	<b>New Jersey:</b>		
<b>Mississippi:</b>			<b>Burlington</b>	<b>27 WGTW-DT</b>	<b>NW 160kw/354m, 40- 02-30/75-14-11</b>
Cleveland	8 WHCQ-LP	PC>3kw, 33-45-28/90-42-56	<b>New Mexico:</b>		
Greenville	38 K53FB	QR from ch. 53, CL from El Dorado, AR dismissed	Alamogordo	63 K63GU	NW 4.1kw, 32-49-45/ 105-52-14
Greenville	48 W41BV	QR from ch. 41, CL from Grenada dismissed	<b>Albuquerque</b>	<b>17 KAZQ-DT</b>	<b>NW 65.6kw/1247</b>
Magee	34 WRBJ	PG 1400kw/375m, 32- 07-18/89-32-52	Chama	40 K40HC	NW 1.2kw, 36-53-58/ 106-36-05 (KASA)
Natchez	30 W30CC	NW 50kw, 31-35-05/91-23-18	Clovis	41 K41JI	QC from K02PW, 14.4kw, 34-26-21/ 103-12-22
Senatobia	47 W46CE	QR from ch. 46, CL from Acton, TN dismissed	Clovis	22 KAZB-LP	CC from K22GZ
Vidalia	44 W44CE	NW 12.7kw, 31-27-17/91-18-54 (KEJB-43)	Fort Sumner	34 K34GU	PG>1.29kw, 34-28-35/ 104-21-24; NW (KENW-3)
<b>Missouri:</b>			<b>Hobbs</b>	<b>29 KUPT</b>	<b>CC from KHFT; FC to UPN</b>
Ashbury	24 KJOM-LP	NW 150kw, 37-23-11/94-42-34	Hobbs	42 K42FX-D	DR; DG; DC 15kw, 32-45-40/ 103-11-31
Belton	33 K53FM	PR>150kw, 38-49-50/94-31-57; CL from Batesville, AR dismissed	Roswell	31 K31GS-D	DG 15kw, 33-24-15/ 104-22-48; DC
Springfield	35 K57FV	PR>150kw, 37-12-48/93-17-43; CL from Batesville, AR dismissed	Ruidoso	18 K18GQ	PG<1.29kw
St. Louis	19 K65FN	PR>150kw, 38-34-24/90-19-30; CL from Batesville, AR dismissed	Silver City	4 KSIL-LP	CC from KWNM-LP
St. Louis	29 K67GR	PR>50kw, 38-25-01/90-25-59; CL from Batesville, AR dismissed	Tucumcari	30 K30HD	PG<1.26kw, 35-08-02/ 103-41-56; NW (KENW-3)
St. Louis	9 KETC	PC>327m (correction only)	<b>New York:</b>		
<b>Montana:</b>			<b>Albany</b>	<b>7 WXXA-DT</b>	<b>NW 10kw/434m, 42- 37-31/74-00-38</b>
Billings	48 KJCZ-LP	CC from K48IQ	<b>Albany</b>	<b>26 WTEN-DT</b>	<b>NW 700kw/426m, 42- 37-31/74-00-38</b>
Kalispell	15, K15GP, 19, K19GD, 51 K51HT	QC from K56DJ/K54CK/ K52BL	Amityville	12 WPXU-LP	DR from ch. 38, 300w
<b>Nebraska:</b>			Batavia	18 W52CB	PR>45kw, 42-53-42/78-00-56; CL from Sault Ste. Marie, MI dismissed
Lincoln	29 K58GD	QC from ch. 58, PC<102.8kw	<b>Buffalo</b>	<b>34 WNYO-DT</b>	<b>NS 175kw/288m, 43- 01-32/78-55-43</b>
McCook	42 K42FV	NW 8.2kw, 40-12-52/ 100-39-51	<b>Buffalo</b>	<b>38 WKBW-DT</b>	<b>NW 358kw/433m</b>
Neligh	40 K40HB	QG from K39AL, 4.6kw; QC	<b>Corning</b>	<b>30 WSKA-DT</b>	<b>PG&lt;25kw/334m, 42- 08-30/77-04-39</b>
<b>Omaha</b>	<b>43 KPTM-DT</b>	<b>NW 700kw/475m</b>	Corning	39 W39CP	NW 1.5kw, 42-08-31/77-04-40
			Hudson	21 KHVB-LP	CC from W21BU
			Manhattan	46 WMBQ-CA	QC from ch. 22, 50kw, 40-44-46/ 73-58-52; CL from Cranford, NJ
			New York	32 WXNY-LP	DR 7.5kw
			New York	35 WNYX-LP	DR 10kw
			New York	39 WNYN-LP	DR 3kw
			New York	42 WKOB-LP	QC from ch. 53, 50kw, 40-42-19/ 74-00-34
			New York	43 WNXV-LP	QR from ch. 26, 2kw
			Port Jervis	64 WASA-LP	CC from W64CW

**North Carolina:**

Asheville 64 WAEN-LP FC; sold to Daystar  
**Greenville** 51 **WEPX-DT** **PR<65kw/140m**  
 Highlands 27 W27BD PR<910w,  
 35-02-21/83-13-04  
 Wanchese 6 WMTO-LP NW 600w,  
 35-50-48/75-37-19

**Ohio:**

Akron 18 W63CH PR>49kw,  
 41-06-28/81-21-19; CL  
 from Houghton Lake,  
 MI dismissed  
 Bowling Green 48 W50CD PR>50kw,  
 41-08-12/83-54-24; CL  
 from Houghton Lake,  
 MI dismissed  
 Cincinnati 36 W61DE QC from ch. 61,  
 22.4kw  
 Defiance 28 W52CO PR>49kw,  
 41-17-29/84-32-15; CL  
 from Houghton Lake,  
 MI dismissed  
 Lima 33 W55CH PR>49kw,  
 40-38-03/84-12-29; CL  
 from Houghton Lake,  
 MI dismissed  
 Springfield 20 W20CL QC from W47BC,  
 8.7kw, 39-57-44/ 83-  
 51-49  
 Toledo 32 W59DC PR>49kw,  
 41-39-12/83-32-53; CL  
 from Houghton Lake,  
 MI dismissed

**Oklahoma:**

Allen 18 KDNT-LP NW 150kw,  
 34-15-47/96-22-43  
 (Daystar)  
 Grove 48 KELF-LP PG>98.4kw,  
 36-52-50/94-59-26  
 Muskogee 25 K25GJ NW 11.2kw,  
 35-41-48/95-18-26  
 (TBN)  
 Oklahoma City 48 K30EC QR from ch. 30, CL  
 from Batesville, AR  
 dismissed

**Oregon:**

Astoria 5 K05LE NW 2.5kw,  
 46-17-10/  
 123-53-50  
 Bend 7 K11SE QR from ch. 11  
 Bend 41 KBND-LP NW 6.5kw,  
 44-04-39/  
 121-19-57  
 Brookings 31 K31GP NW 2.15kw,  
 42-03-09/  
 124-16-51 (KNMT-24)  
 Brookings 7 K07JT PC>300w,  
 42-02-43/  
 124-14-00  
 Chiloquin 6 K06LS PC>500w,  
 42-38-20/  
 121-56-03  
 Paisley 4 K04PK NW 230w,  
 42-23-28/  
 120-22-04 (KOPB)  
**Pendleton** 8 **KFFX-DT** **NW 59kw/453m**  
 Portland 20 K63GK QR from ch. 63, CL  
 from Eureka, CA  
 dismissed  
 Port Orford 8 K08AK PC>300w,  
 42-44-25/  
 124-30-17

**Pennsylvania:**

Erie 9 WWTF-LP CC from W09CR  
 Erie 40 W65DJ PR>50kw,  
 42-05-25/79-56-36; CL  
 from Houghton Lake,  
 MI dismissed  
 Mansfield 26 W26CV NW 640w,  
 41-45-34/76-55-31  
**Philadelphia** 10 **WCAU** **PC 137kw/392m, 40-  
 02-30/75-14-11**  
 Pittsburgh 30 WBPA-LP QC from ch. 29,  
 8.5kw, 40-29-39/ 80-  
 01-13

**South Carolina:**

Charleston 29 W47BX QR from ch. 47, CL  
 from Colquitt, GA  
 dismissed  
**Rock Hill** 15 **WNSC-DT** **NW 403kw/212m**  
**Rock Hill** 30 **WNSC-TV** **PC>2674kw/212m**  
 Spartanburg 51 WSQY-LP FC; sold to Daystar

**South Dakota:**

Mitchell 9 K09UN PC<40w,  
 43-41-51/98-02-46  
 Pierre 32 K32FW NW 3.8kw,  
 44-25-23/  
 100-21-17 (3Abn)  
 Sioux Falls 45 K67GH QR from ch. 67, CL  
 from Ottumwa, IA  
 dismissed

**Tennessee:**

Chattanooga 20 W66CG QR from ch. 66, CL  
 from Acton, TN  
 dismissed  
**Chattanooga** 35 **WTVC-DT** **PC>575kw/299m**  
**Chattanooga** 40 **WDSI-DT** **NW 84kw/350m**  
 Memphis 16 W25BY QR from ch. 25, CL  
 from Jackson  
 dismissed  
 Memphis 38 W38BY CL from Jackson  
 dismissed

**Texas:**

Abilene 18 KJTN-LP NW 3kw,  
 32-26-38/99-44-04  
 Abilene 48 WIRP-LP NW 5kw,  
 32-25-04/99-58-16  
 Alice 34 K34GV NW 10kw,  
 27-43-28/98-08-43  
 Amarillo 5 KTXQ-LP CC from K05LS  
**Austin** 24 **KVUE** **PC<1696kw/393m 30-  
 19-19/97-48-12**  
 Beaumont 53 KPPY-LP CC from K53II  
 Corpus Christi 22 K50DW QR from ch. 50, CL  
 from Alexandria, LA  
 dismissed  
 Corpus Christi 36 KCCZ-LP PC<10kw,  
 27-47-48/  
 97-24-15; QR from ch.  
 61  
 Garfield 17 KVAT-LP CC from K17GH  
 Garland 25 K57GF QR from ch. 57, CL  
 from El Dorado, AR  
 dismissed  
 Houston 21 KVQT-LP PC 150kw,  
 29-34-15/95-30-37  
 Houston 30 KCVH-LP CC from K30CV  
**Laredo** 31 **KVTV-DT** **PR<35kw/181m**  
 Livingston 7 KETX-LP PG>3kw  
 Longview 41 K43EI QR from ch. 43, CL  
 from Alexandria, LA  
 dismissed



Lubbock	24 K24GP	Relays KGLR-LP 30, religious
Lubbock	38 K38HP	NW 15kw, 33-30-58/101-50-54
<b>Lufkin</b>	<b>9 KTRE</b>	<b>PC&lt;175kw</b>
<b>Lufkin</b>	<b>11 KTRE-DT</b>	<b>NW 10kw/204m</b>
Midland	69 K69IT	PG>9.5kw, 31-59-44/102-15-28
San Antonio	19 K60GE	QR from ch. 60, CL from Alexandria, LA dismissed
San Antonio	40 KISA-LP	CC from K40IH
San Saba	41 K41HX	NW 45kw, 31-11-26/98-42-55
Sherman	44 K59FJ	QR from ch. 59, CL from El Dorado, AR dismissed
Sweetwater	22 K22GS	NW 10kw, 32-29-11/100-22-05
Texarkana	42 K63FX	QR from ch. 63, CL from El Dorado, AR dismissed
Victoria	23 KSVH-LP	CC from K23GQ
<b>Wolfforth</b>	<b>22 KWBZ-TV</b>	<b>CC from KUPT; FC to WB</b>
<b>Utah:</b>		
Beaver	44, K44HT, 46 K46IB	NW 600w, 38-27-04/112-39-05 (ch. 44 w/KJZZ-14)
Blanding & Monticello	47 K47JI	NW 350w, 37-50-22/109-27-42 (KUED-7 or KULC-9)
Brian Head	35 K35HG	PG<1.47kw; PC
Kanarraville	47 K47IS	NW 1.2kw, 37-38-18/113-01-52
Mount Pleasant	48 K48IL	NW 1.8kw, 39-32-22/111-23-17
Tooele	65 K65HO	QC from K64FZ
Tropic & Cannonville	29 K29GJ	NW 600w, 37-42-41/112-04-39 (KSTU)
<b>Vermont:</b>		
Rutland	35 W61CE	QR from ch. 61, 20kw
<b>Washington:</b>		
<b>Bellingham</b>	<b>35 KVOs-DT</b>	<b>PR&gt;580kw/799m, 48-40-50/122-50-22</b>
Bremerton	26 K54AO	QR from ch. 54, 2.2kw
Puyallup	49 K54GS	QR from ch. 54, 2.2kw
Seattle	47 K57HB	QR from ch. 57, CL from Eureka, CA dismissed
Spokane	43 K43GZ	QC from K14IF, 52.5kw, 47-34-45/117-17-51
<b>Yakima</b>	<b>47 KYVE</b>	<b>PG&lt;110kw</b>
<b>West Virginia:</b>		
Clarksburg	44 W44CF	PR>11.2kw; PG
<b>Wisconsin:</b>		
Chippewa Falls	51 NEW-LP	AF dismissed
Eau Claire	24 W56DI	PR>150kw, 44-48-00/91-27-57; CL from Sault Ste. Marie,

La Crosse	21 W60CI	MI dismissed PR>100kw, 43-48-17/91-22-07; CL from Whiting dismissed
<b>Madison</b>	<b>21 WHA-TV</b>	<b>NW 1140kw/408m (aux)</b>
Madison	34 W58CO	PR>25kw, 43-12-44/89-35-59; CL from Sault Ste. Marie, MI dismissed
<b>Milwaukee</b>	<b>22 WVCY-DT</b>	<b>PR&lt;286m, 43-05-46/87-54-15 reinstated</b>
Tigerton	4 W04CW	PG>250w, 44-42-04/88-53-24

KPHZ and KDTP have also swapped cities-of-license, though that doesn't appear to be reflected in the FCC DB or Public Notices yet...

The CRTC has announced that an application has been filed for new stations in Edmonton and Calgary. As is normal practice in Canada, they are soliciting further applications for these cities. There is no guarantee they will grant any such applications. (it is also possible they will grant more than one in one or both cities) The applicant who triggered the call has not been announced.

Channels 19, 23, 32, and 38 are allotted to Calgary; channel 45 is the only unused allotment in Edmonton.

**THIS MONTH'S COVER**

Comes to us from Jim Renfrew. This is a picture of the ice-covered WVIT-30 tower in Farmington, CT. dated November 2002 and shows the tower almost completely covered in ice. The engineer who sent the picture is Joe Dimaggio (really!). The antenna has heaters to keep the top free of ice build-up.



**WVCY-DT Ch 22 Milwaukee WI**

# FM NEWS

from the WTFDA

3860 Shorewood Drive  
Fremont Michigan 49412-9604  
Phone: 231 924 0730



Chris Kadlec

E-Mail: [beaglebass@beaglebass.com](mailto:beaglebass@beaglebass.com)  
[http://www.beaglebass.com/dx\\_index.htm](http://www.beaglebass.com/dx_index.htm)

FEB 2006

The following have been omitted this month for lack of changes: Delaware, District of Columbia, Prince Edward Island, and Vermont.

## INDEX OF ABBREVIATIONS

AF applied for (a new station)  
 AFA American Family Association  
 CC call letter change  
 CL city of license change  
 CX a construction permit has been cancelled  
 C1-C5 change in status to that FM license class  
 DA directional antenna  
 DE station has been deleted  
 FC format change  
 GA granted amendment to table of FM allocations  
 GE granted extension of construction permit  
 GX granted replacement of expired permit  
 LC license to cover filed (ready to come on air)  
 MC multiple-city ID  
 NC no change yet on a reported change or permit  
 ND non-directional antenna  
 NO not on the air

NS new station granted  
 NW new station signs on  
 OSA one step application granted for change  
 PA proposed amendment change to FM allocation table  
 PC power change on the air (> = increase, < = decrease)  
 PG power change granted (> = increase, < = decrease)  
 PR power change requested  
 QC frequency change occurred  
 QG frequency change granted  
 QR frequency change requested  
 RA silent station returns to the air  
 RE station requests an extension on permit  
 RX station requests replacement of expired permit  
 SC slogan change or update  
 SI station is silent  
 SOA signed on the air  
 XA dismissed amendment to FM allocations  
 XC transmitter site change occurred  
 XG transmitter site change granted

## UNITED STATES and CANADA

### Alabama / AL

Midfield 95.7 WBHJ / PC<12kw/306m, 33-27-37/86-51-07  
 Phenix City 97.1 WURY-LP / NW 21w/64m, 32-26-59/85-00-41  
 Tuscaloosa 88.9 WMFT / NW 100kw-V/159m, 33-20-19/87-21-32 (Moody Bible Inst.)

### Alaska / AK

Delta Junction 93.5 KDJF / CC for NS

### Alberta / AB

Airdrie 99.5 NEW / AF 3.2kw/88m, adcon  
 Airdrie 100.3 NEW / AF 6kw/63m, hot adcon  
 Airdrie 106.1 NEW / AF 6kw/35m, "eclectic adcon"  
 Calgary 90.3 NEW / AF 100kw/299m, soft adcon  
 Calgary 92.9 NEW / AF 6 applications: 100kw/302m nostalgia, soft adcon; 100kw/160m soft adcon, modern rock, adult alt; 50kw/299m ethnic  
 Calgary 100.3 NEW / AF 100kw/277m, folk  
 Calgary 104.5 NEW / AF 100kw/160m, hot adcon  
 Cochrane 99.1 NEW / AF 15w/117m, to relay Airdrie 106.1  
 Edmonton 97.3 CIRK-FM / PG>, XG, facilities not given  
 Edmonton 100.3 CFBR-FM / PG, facilities not given  
 Edmonton 103.9 CISN-FM / PG<200m, 53-27-49/113-20-07  
 High River 99.7 NEW / AF 7.4kw/132m, chr  
 Lethbridge 90.3 NEW / AF 20kw/174m religious adcon by CJSI-88.9 Calgary  
 Lethbridge 94.1 NEW / AF 3 applications: 100kw/132m classic hits; 100kw/174m chr; 100kw/176m nostalgia  
 Lethbridge 98.1 CJTS-FM / QR from 97.1, 20kw/174m

### Arizona / AZ

Coolidge 89.9 KCOO / FC; sold to K-Love  
 Flagstaff 100.1 KVNA-FM / PC<5.2kw/437m  
 Flagstaff 100.1 KVNA-FM / PG>38kw/437m, 34-58-05/111-30-29 cancelled ROA  
 Mayer 98.3 KKLD / PR>852m

### Arkansas / AR

Conway 105.1 KMJX / NW 16.5kw/262m (aux)  
 Hot Springs Vil. 92.9 KVRE / NW 6kw/91m (aux)  
 Jacksonville 100.3 KDJE / NW 16.5kw/262m (aux)  
 Kensett 105.7 KKSJ / CC for NS 20041229AAC  
 Magnolia 97.3 KQHN / QC from 107.9, CL from Magnolia, Ark. via Oil City, La.; PC<42kw, 163m, 32-29-36/93-45-45  
 Magnolia 107.9 KQHN / CL from Magnolia, Arkansas dismissed; moved to 97.3 in Waskom, Texas instead

### British Columbia / BC

Vancouver 93.1 CKYE-FM / PG>6kw-H/673m, 49-21-29/122-57-09; CC for NS, to be ethnic

### California / CA

Adelanto 92.7 KELT / PC 280w/449m, 34-36-44/117-17-27  
 Avalon 92.7 KLIT / PC 6kw/45m, 33-20-23/118-19-09  
 Barstow 89.1 KVID / NW 260w/221m, 34-58-17/117-02-22 (K-Love)  
 Barstow 89.1 KODV / CC from KVID  
 Barstow 91.3 KWTH / NW 1.55kw/700m, 34-38-39/116-37-38  
 Barstow 101.3 NEW / GA, class A  
 Chester 98.9 KWLW / NW 12kw/740m, 40-14-00/121-01-11  
 Chester 98.9 KWLW / PC<12kw/740m  
 Chico 92.7 KLRS / AF 700w/169m (aux)

**Corning** 100.7 KTHU / AF 900w/52m, 39-53-17/122-37-38 (aux)  
**East Porterville** 100.5 KMQA / PR>1.96kw/628m, 35-45-36/118-45-30  
**Edwards** 103.9 KEDD / PG 6kw/100m, 34-58-45/118-10-02; CL from Johannesburg  
**El Cerrito** 88.1 KECG / PC<-29m, 37-54-20/122-17-34  
**Fountain Valley** 92.7 KLIT / PC 690w/293m, 33-36-20/117-48-35  
**Fowler** 96.7 KALZ / XC 36-41-42/119-43-56  
**Fresno** 90.3 KFNO / PC>2.2kw/594m  
**Greenfield** 98.7 NEW / GA, class A  
**Lodi** 97.7 KWLN / PC>6kw, 38-03-06/121-15-10  
**Los Angeles** 104.3 KBIG-FM / PC 65kw/928m  
**Maricopa** 94.9 KXTT / PR>11m, 35-05-10/119-26-06  
**Mendocino** 89.3 KAKX / PC>71m, 39-18-46/123-46-57  
**Modesto** 90.5 KADV / XG 37-36-28/120-57-27  
**Modesto** 106.9 KEQP-LP / NW ?w/64m, 37-38-31/120-59-48  
**Moss Beach** 89.3 KLSI / PG 8w/498m, 37-33-44/122-28-46  
**Occidental** 107.3 KOWS-LP / XR 38-24-44/122-57-25  
**Ridgecrest** 92.7 KZIQ-FM / PC 3kw/-40m, 35-36-58/117-38-35  
**San Diego** 89.5 KPBS-FM / PC>4.4kw/550m, 32-41-53/116-56-03  
**San Diego** 107.5 KHHS-LP / CC for NS  
**Sunnyvale** 104.9 KCNL / PG>-24m  
**Taft** 106.5 KEAL / PR<11m, 35-05-10/119-26-06

#### Colorado / CO

**Cañon City** 104.5 KKCS-FM / CC from KSTY  
**Colorado Sps.** 101.9 KGDO / CC from KKCS-FM  
**Cuchara** 106.9 KCQX-LP / NW 100w/-109m, 37-20-38/105-05-46  
**Frisco** 90.3 KTDX / CC for NS  
**Glenwood Sps.** 91.9 KLVX / PC<750w-H/180w-V  
**Leadville** 90.7 KTOL / CC for NS  
**Manitou Sps.** 102.7 KBIQ / NS 12kw/643m (aux)  
**Manitou Sps.** 102.7 KBIQ / AF 12kw/643m (aux)  
**New Castle** 94.5 KJEB / CC from KCUV-FM  
**Paonia** 90.9 KVNF / PC>2.6kw/-22m, 38-52-28/107-39-40  
**Pueblo** 100.7 KGFT / NS 12kw/643m (aux)  
**Pueblo** 100.7 KGFT / AF 12kw/643m (aux)  
**Salida** 91.3 KTPF / CC for NS  
**Sidney** 91.7 KTSG / NW 2.5kw-H/186m, 40-27-43/106-50-58 (KTLF relig.)  
**Sidney** 91.7 KTSG / CC for NS  
**Strasburg** 102.3 KCUV-FM / CC from KJEB  
**Timnath** 105.5 KJAC / PR 50kw/397m  
**Trinidad** 90.7 KTDL / CC for NS  
**Walsenburg** 91.3 KTWX / CC for NS  
**Walsenburg** 101.3 KWCS / CC for NS  
**Westcliffe** 89.3 KTAW / CC for NS

#### Connecticut / CT

**Niantic** 107.3 WNLN-LP / PR 22kw/62m, 41-19-09/72-16-16  
**Niantic** 107.3 WNLN-LP / PG>62m, 41-19-09/72-16-16

#### Florida / FL

**Belleview** 91.3 WYFZ / CC from WWKO  
**Callahan** 93.3 WROO / CC from WPLA  
**Florida City** 88.5 WMFL / PC>7.7kw/52m, 25-19-31/80-24-16 (adds H, was V only)  
**Gifford** 94.7 WSYR-FM / PC>50kw/101m  
**Homosassa** 103.1 WJIX-LP / PR<27m, 28-47-50/82-32-56  
**Homosassa** 103.1 WJIX-LP / PG<27m, 28-47-49/82-32-57  
**Jacksonville** 107.3 WPLA / CC from WROO  
**Key West** 90.1 WKWR / PR>100kw/151m, 24-40-35/81-30-41  
**Palm Bay** 107.9 WGRV-LP / PR>30m, 27-59-14/80-37-44  
**Panama City** 107.9 WPFM-FM / NW 1.3kw/35m, 30-09-58/85-45-21 (aux)

**Sebastian** 95.9 WSJZ-FM / PR>21.5kw/109m, 27-53-21/80-33-27  
**Sebastian** 95.9 WSJZ-FM / PG 21.5kw/109m, 27-53-21/80-33-27  
**Shalimar** 93.3 WPGG / PR<50kw/143m, 30-24-38/86-37-22; CL from Evergreen, AL  
**Titusville** 89.3 WPIO / PC>7.1kw/102m  
**Venice** 92.1 WLTO-FM / PC 11.5kw/145m

#### Georgia / GA

**Atlanta** 92.9 WZGC / PC 66kw/340m, 33-48-26/84-20-22  
**Augusta** 90.7 WACG-FM / PG 3.7kw/421m, 33-24-18/81-50-15  
**Calhoun** 91.3 WPAW / CC for NS  
**College Park** 100.5 WWOQ / 5kw/315m, 33-46-57/84-23-19 (aux)  
**Doraville** 95.5 WBTS / NW 10kw/295m, 33-55-51/83-47-00 (aux)  
**Gainesville** 97.1 WFOX / NW 50kw/231m, 33-55-51/83-47-00 (aux)  
**Rincon** 100.1 WMZD / PR>150m, 32-16-49/81-11-40; CL from Statesboro  
**Roswell** 107.5 WJZZ-FM / NS 25kw/100m (aux)  
**Roswell** 107.5 WJZZ-FM / AF 25kw/100m (aux)  
**Thomson** 89.9 WTHM / CC for NS  
**Tybee Island** 103.9 WTYB / AF 15kw/105m (aux)  
**Tybee Island** 103.9 WTYB / PC>50kw/105m, 32-03-33/81-00-57; CL from Springfield  
**Zebulon** 92.5 WEKS / PR 12kw/145m, 33-08-20/84-31-31  
**Zebulon** 92.5 WEKS / PG 12kw/145m, 33-08-20/84-31-31

#### Guam / GU

**Agana** 101.9 KTKB-FM / CC from KTKB

#### Hawai'i / HI

**Pahala** 90.5 KPHL / PR<250w/-12m, 19-06-02/155-34-09  
**Volcano** 107.7 KKOAA / PR>28kw

#### Idaho / ID

**Hailey** 105.5 KLCW-LP / CC for NS  
**Hazelton** 94.3 KTPD / CC for NS  
**Idaho Falls** 90.5 KAIO / QG from 90.7, 500w-V (drops H)  
**Ririe** 91.7 KSQS / CC for NS  
**Twin Falls** 98.3 KSNQ / NW 100kw/189m, 42-43-42/114-24-48  
**Twin Falls** 102.1 KISI / CC for NS

#### Illinois / IL

**Dorsey** 89.5 WDRS / NW 30w/85m, 38-59-04/89-59-20 (K-Love)  
**Jerseyville** 104.1 WHHL / CC from WRDA  
**Normal** 100.7 WVMG / NW 4.2kw/105m, 40-27-08/88-57-48  
**Olney** 88.1 WPTH / PC>1kw  
**Princeton** 88.3 WPRC / NW 150w-V/96m, 41-16-53/89-35-12 (WIBI-91.1)  
**Round Lake Hts.** 98.3 WRLR-LP / NW 96w/30m, 42-23-11/88-05-51  
**St. Anne** 106.5 WXNU / CC for NS  
**Streator** 106.1 WYYS / PC 2.45kw/159m, 41-16-30/88-57-56

#### Indiana / IN

**Bloomington** 100.3 WIUX-LP / NW 22w/63m, 39-10-17/86-30-58 (IU Student Broadcasting)  
**Boonville** 107.1 WEJK / CC from WYXY  
**Charlestown** 104.3 WLRX / CC from WEGK  
**Elwood** 101.7 WURK / PC>6kw  
**Goshen** 91.1 WGCS / PR, facilities unknown  
**Lanesville** 96.5 WGZB-FM / PC 1.6kw/194m, 38-10-25/85-54-50; CL from Corydon  
**Logansport** 89.5 WWTS / CX, DE; P4R (CP expired)

Lowell 88.5 WTMK / NW 1.5kw/51m, 41-04-59/87-10-47 (CSN religious)  
 Lowell 89.1 WWLO / PG 2.4kw/77m, 41-19-24/87-21-22  
 Newburgh 106.1 WDKS / XR 37-52-57/87-32-27  
 Oolitic 88.9 WMYJ-FM / NW 5.2kw-V/78m, 38-59-14/86-27-31  
 Oolitic 88.9 WMYJ-FM / CC from WMYJ  
 Terre Haute 91.9 WHOJ / PG>3.8kw/20m  
 Wakarusa 89.9 WYBV / CC for NS

#### Iowa / IA

Dubuque 89.7 KDUB / NW 2.6kw/197m, 42-36-18/90-47-57 (KUNI-90.9, NPR)  
 Indianola 94.1 KOLH-LP / PR 100w/23m, 41-22-48/93-33-19 dismissed  
 Indianola 94.1 KOLH-LP / PR<23m, 41-22-48/93-33-19  
 Keokuk 90.9 KMDY / PR>25kw/70m, 40-28-29/91-20-30  
 Keokuk 90.9 KMDY / FC; sold by Moody Bible Inst.  
 Wapello 88.9 KLRX / NW 13.5kw-V/151m, 41-04-59/91-10-18 (K-Love) (may have very low V power, less than 5 watts, at 146m)

#### Kansas / KS

Concordia 94.9 KCKS / PR>178m, 39-20-51/97-28-08  
 Haven 97.1 KSKU / PR 11.5kw/312m, 37-47-47/97-31-59, CL from Hutchinson  
 Topeka 94.5 WIBW-FM / PG>354m, 39-01-34/95-55-01

#### Kentucky / KY

Augusta 106.7 NEW / PA, class A, denied. Too close to WNKR.  
 Columbia 93.5 WAIN-FM / PR>61m, 37-06-26/85-16-42  
 Corydon 95.3 WMSK-FM / granted CL from Morganfield  
 Lebanon 100.9 WLSK / PR<6.6kw/126m  
 Owingsville 107.7 WKCA / XR 38-06-08/83-50-12  
 Shelbyville 101.7 WXTF / CC from WJZO  
 Somerset 88.1 WKVY / NW 4kw-V/160m, 37-04-36/84-48-39

#### Louisiana / LA

Anacoco 103.1 NEW / GA, class C3  
 Baton Rouge 96.9 WHYR-LP / CC for NS  
 Lafayette 88.7 KRVS / PC>27.5kw-H/100kw-V/379m, 30-19-20/92-22-40  
 Monroe 106.1 KXRR / PR>100kw/453m  
 Natchitoches 97.5 KDBH-FM / QC from 97.3, 6kw  
 Oil City 99.9 KRMD-FM / QC from 101.1, 97.7kw; CL from Shreveport  
 Oil City 101.1 KRMD-FM / PC 97.7kw/346m; CL changed from Shreveport  
 Richwood 100.9 KHLL / PG>6.5kw

#### Maine / ME

Fort Kent 106.5 WMEF / PR<7.4kw  
 Standish 97.1 WJZF-LP / PG 23w/61m, 43-44-37/70-32-23  
 Standish 97.1 WJZF-LP / XR 61m, 43-44-37/70-32-23

#### Manitoba / MB

Swan River 104.5 NEW / AF 210w/18m, variety  
 Winnipeg 100.7 CHNR / CC to CKFE  
 Winnipeg 100.7 CKFE / FC to "Café 100.7" new variety format

#### Maryland / MD

Lexington Park 97.7 WMDM-FM / PC>6kw/100m

#### Massachusetts / MA

Holyoke 104.9 WREA-LP / CC for NS

Worcester 96.1 WSRS / PR>20kw/212m (aux)  
 Worcester 96.1 WSRS / PC>20kw/212m (aux)

#### Michigan / MI

Charlotte 106.1 WJXQ / CL changed from Jackson  
 Charlotte 106.1 WJXQ / PG 49kw/151m, 42-23-31/84-37-22; CL from Jackson  
 Charlotte 106.1 WJXQ / PC 49kw/151m, 42-23-31/84-37-22; CL from Jackson  
 Escanaba 97.1 WGLQ / PR>451m  
 Fenwick 93.1 WDLP-LP / QR from 92.9  
 Fenwick 93.1 WDLP-LP / QG from 92.9  
 Gagetown 88.5 WPEE / CC for NS  
 Grand Ledge 92.9 WJZL / PG>4.6kw/114m, 42-43-58/84-33-13; CL from Charlotte  
 Hartford 98.3 WCSY-FM / GA from South Haven (will allow power increase to 6kw by clearing short-spacing)  
 Hartford 103.7 WHIT-FM / CC from WSPZ-FM  
 Holland 96.1 WMAX-FM / CC from WVTI  
 Onsted 88.3 WAQQ / CC from WAQQ  
 Pickford 105.5 WMKD / CC from WADW  
 Pickford 105.5 WMKD / PC>100kw/77m, 46-23-48/84-23-52 (same tower as WYSS 99.5)  
 Rogers Hts. 88.1 WAQQ / CC from WAQQ  
 Sault Ste. Marie 99.5 WYSS / PC>100kw/77m  
 South Haven 103.7 WZBL / GA from Hartford

#### Minnesota / MN

Bemidji 92.3 KBJL-LP / CC for NS  
 Rochester 88.7 KMSE / PR 10w/192m-H, 200w/189m-V, 44-02-28/92-20-25  
 Sleepy Eye 107.3 KNUJ-FM / PC>4kw/124m

#### Mississippi / MS

Benton 93.1 WYAB / NW 6kw/100m, 32-41-03/90-15-10  
 Benton 93.1 WYAB / PC 6kw/100m, 32-41-03/90-15-10; CL from Yazoo City  
 Forest 91.7 WSQH / NW 15kw/145m, 32-23-57/89-05-02  
 Greenville 91.5 WFBI / PG 50kw/98m, 33-32-25/91-22-39  
 Laurel 90.9 WATP / PR 75kw/206m, 31-50-09/88-52-21 (V only, drops H)  
 Madison 96.3 WUSJ / req. CL from Jackson

#### Missouri / MO

Gideon 103.9 KGLU / CC for NS  
 Joplin 92.5 KSYN / PC>300m, 37-05-49/94-34-25  
 Joplin 102.5 KIXQ / PR>278m, 37-05-49/94-34-25; PG; PC  
 Joplin 102.5 KIXQ / PG>278m, 37-05-49/94-34-25  
 Rolla 103.1 KDAA / PR>2.05kw

#### Montana / MT

Butte 88.1 KFRD / PC>850w  
 Sidney 93.1 KG CX / NW 100kw/110m, 47-51-5103-57-27  
 Whitehall 89.7 KAIB / PR<3.5kw-V/549m, 46-00-23/112-26-28

#### Nebraska / NE

Lincoln 105.3 KLNC / PR 3kw/144m, 40-43-38/96-36-51  
 Nebraska City 97.7 KBBX-FM / NW 25.5kw/165m, 40-53-27/96-09-11 (aux)  
 Norfolk 94.7 KNEN / PR>164m, 41-55-28/97-36-22

#### Nevada / NV

Gardnerville 94.7 KYHW-LP / NW 100w/-108m, 38-54-39/119-43-47  
 Gardnerville 99.1 KCMY / PR>612m, 39-15-34/119-42-21 in Gardnerville-Minden  
 Gardnerville 99.1 KCMY / PG>410w/601m, 39-15-21/119-42-37 in Gardnerville-Minden

Moapa Valley 104.7 KJUL / CC from KWLY

### New Brunswick / NB

Saint John 103.5 CFHA-FM / XG 45-16-21/66-03-30

### New Hampshire / NH

Campton 105.7 WLKC / PR 4.1kw/119m, 43-45-45/71-39-00  
Dublin 100.3 WFCB-LP / PG 164m, 42-53-58/72-07-16  
Dublin 100.3 WFCB-LP / PC ?w/164m, 42-53-58/72-07-16  
Dublin 100.3 WFCB-LP / XC 164m, 42-53-58/72-07-16  
Exeter 107.1 WERZ / PR 6kw/100m, 42-59-23/70-56-14

### Newfoundland and Labrador / NL

Fermeuse 104.3 CBN-x-FM / AF 3.2kw/61m, 46-57-48/52-57-02, // CBN-AM 640 (CBC Radio 1)  
Glovertown 101.5 CBNG-FM / QR from 1090 AM, 1.276kw/149m, 48-40-39/54-04-19, // CBG-AM 1400 (CBC Radio 1)  
Marystown 91.7 CBN-FM-x / AF 100kw/195m, 47-08-39/55-08-52, // CBN-FM 106.9 (CBC Radio 2)

### New Jersey / NJ

Bass River Twp. 106.5 WKOE / QR from 106.3; 1.45kw/208m, 39-37-53/74-21-12; CL from Ocean City  
Belvidere 107.1 WWYY / PG 1.05kw/230m, 40-56-56/75-09-29  
Newark 105.9 WCAA / NW 1kw-H/870w-V/283m, 40-45-22/73-59-12 (aux)  
Zarephath 99.1 WAWZ / AF 17.8kw/182m (aux)

### New Mexico / NM

Alamogordo 95.1 KALH-LP / NW 100w/-65m, 32-56-44/105-56-47  
Angel Fire 99.9 KKTC / QC from 99.1, 1.75kw/646m, 36-33-30/105-11-38  
Clovis 90.3 KELU / CC from KKCC  
Las Vegas 91.1 KEDP / PC>-61m, 35-35-39/105-13-15  
Lordsburg 97.9 KPSA-FM / QR from 97.7, 43kw/622m, 32-34-57/108-25-29  
Maljamar 105.1 KMMW / PR<281.6m (a difference of 40cm./16 in.)  
Roswell 99.3 KWFL / QG from 99.5, 50kw/136m  
Socorro 91.9 KXFR / CC for NS  
Taos 99.1 KXMT / NW 60kw/651m, 36-51-32/106-00-28

### New York / NY

Canton 102.9 WNCQ-FM / PR>25kw/100m, 44-32-10/75-05-46  
DeRuyter 105.1 WWDG / PG 33kw/185m  
Oneonta 103.9 WSRK / PR 1.4kw/180m, 42-25-26/75-02-33  
Rochester 91.5 WXXI-FM / NS 4.4kw/130m (aux)

### North Carolina / NC

Bayboro 97.9 WNBB / PR>50kw  
Clemmons 105.7 WFMX / GA from class C to C1, CL from Statesville  
Elizabethtown 105.7 WGQR / FC; sold to religious organization  
Elizabethtown 105.7 WGQR / XC<116m, 34-37-32/78-37-28  
Kinston 97.7 WWNF / PC>2.65kw/153m, 35-17-30/77-49-25  
La Grange 104.7 WZUP / GA from class C3 to C2  
Lockwoods F.T. 88.1 WGHW / PR<1.5kw in Lockwoods Folly Town  
Lumberton 89.5 WLPS-FM / CC for NS  
Mars Hill 90.5 WYQS / PC 300w/-80m, 35-49-39/82-33-06 (adds V, was H only)

Nashville 99.3 WZAX / QC from 99.7  
Raeford 88.7 WRAE / PG 2.25kw-V/142m, 34-54-57/79-07-28  
Raleigh 88.1 WKNC-FM / PC>25kw  
Richlands 104.1 WWTB / PA from 103.9, class C3 to A; CL from Topsail Beach, dismissed  
Swansboro 104.1 WWTB / GA from 103.9, class C3 to A; CL from Topsail Beach (counterproposal to Richlands)  
Thomasville 98.3 WIST-FM / CC from WIST  
Topsail Beach 93.7 WBNE / GA from class A to C3, CL from Wrightsville Beach  
Wilmington 90.5 WWIL-FM / PG>40kw/145m, 34-14-37/78-07-24  
Wingate 91.9 WRCM / PG 30kw/156m, 35-03-34/80-40-14  
Wrightsville Bch. 103.7 WBNU / GA from class C3, CL from Shallotte

### North Dakota / ND

Bismarck 88.3 KBMK / PG<5.5kw-V/116m, 46-49-38/100-46-28  
Bismarck 93.7 KBEP-LP / CC for NS

### Nova Scotia / NS

Bedford 89.1 NEW / AF 50w/-20m, Bedford Baptist Church  
Dartmouth 104.3 CFRQ-FM / PG, facilities not given

### Ohio / OH

Archbold 89.5 WBCY / PC 20kw/96m, 41-28-59/84-16-59 (correction only)  
Fremont 99.1 WFRO-FM / PR 11.5kw/111m  
Harrison 104.3 WNLT / PR 5.6kw/96m  
Holland 102.3 WPOS-FM / Granted conversion from commercial to non-commercial  
Lexington 89.5 WFOT / CC for NS  
Mason 97.7 WOXY / PR 5.6kw/103m, 39-27-48/84-22-37, CL from Oxford  
Norwood 100.3 WIFE / PR<3.6kw/130m, 39-07-19/84-32-52; CL from Connersville, IN  
South Webster 94.9 WSNA / PG 1.6kw/180m, 38-42-31/82-40-15

### Oklahoma / OK

Bennington 98.1 KFYZ-FM / PR 2.5kw/88m, 34-02-48/95-56-30  
Sand Springs 102.3 KKCM / CC from KRTQ  
Weatherford 97.3 KOJK / CC from KWEY-FM

### Ontario / ON

Erin 101.5 NEW / AF 50w/44m, community  
Haldimand Co. 92.9 CKNS-FM / NS 13kw/225m, 42-56-29/79-50-45; previously approved but not on requested 106.7  
Hamilton/Burl. 94.7 CIWV-FM / PG>45kw  
Little Current 102.1 CJTK-FM-x / NS 1.3kw-V/128m, 45-57-15/81-56-45  
London 98.1 CHJX-FM / QR from 105.9, PR>93.1 CHCD-FM-1 / AF 6kw-H/84m, 42-55-36/79-58-15; denied, adjacent 92.9 granted to CKNS-FM instead  
Nelles Corners  
Ottawa 104.7 NEW / NS, TIS, previously approved but not on requested 96.5

### Oregon / OR

Bay City 95.9 KIXT / NW 450w/360m, 45-27-59/123-55-11  
Florence 88.1 KLFO / PC 250w/167m, 43-57-26/124-04-26  
Gleneden Bch. 89.3 KOGL / CC for NS

### Pennsylvania / PA

Erie 90.5 WERG / PC>2.75kw/114m, 42-02-34/80-03-57  
Erie 95.9 NEW / GA, class A

**Gallitzin** 93.5 WHPA / PR>1.25kw/222m, 40-29-36/78-32-31; CL from Barnesboro  
**Philadelphia** 96.5 WRDW-FM / NW 5kw/164m (aux)  
**Red Lion** 96.1 WSOX / NW 4.5kw/247m (aux)

**Puerto Rico / PR**

**Levittown** 88.5 WPLI / PR>100w-V/21m (drops H)

**Québec / QC**

**Chandler** 96.3 CFMV-FM / QR from 92.1, 18.5kw/138m, XR  
**Donnacona** 100.9 CKNU-FM / PR>1.585kw/429m, XR  
**Gaspé** 94.5 CJRG-FM / PC 3.8kw, antenna height increase  
**Lévis** 92.7 NEW / AF 7.6kw/61m, French pop  
**Lévis** 105.7 NEW / AF 800w/121m, French country  
**Québec** 92.5 NEW / AF 10kw/373m, French talk  
**Québec** 92.7 NEW / AF 5kw/374m, French classical  
**Québec** 105.7 NEW / AF 10kw/373m, English rock  
**Québec** 106.9 NEW / AF 16.9kw/410m, French jazz  
**Québec** 106.9 NEW / AF 1.41kw/429m, English CHR  
**Québec** 106.9 CIMI-FM / QR from 103.7, 6.55kw/192m, XR, in Charlesbourg

**Rhode Island / RI**

**Ashaway** 96.9 WBLQ-LP / CC from WCTD-LP  
**Westerly** 88.1 WKIV / CC from WBLQ

**Saskatchewan / SK**

**Tisdale** 103.1 NEW / AF 273w-H/30m, 52-51-04/104-02-48, country  
**Weyburn** 103.5 NEW / AF 100kw/74m, rock

**South Carolina / SC**

**Clearwater** 98.3 WSLT / NW 6.2kw/148m (aux)  
**Gaffney** 105.3 WAGI-FM / PR>450m, 35-03-58/81-20-18, DA  
**Lake Wylie** 93.7 WYLI-LP / PR>21m, 35-06-37/81-02-35 dismissed  
**Lake Wylie** 93.7 WYLI-LP / XR 35-06-37/81-02-35  
**Lexington** 98.5 WLXC / NW 6kw/67m (aux)  
**Murrells Inlet** 94.5 WYEZ / PC 12kw/145m  
**Parris Island** 103.1 WGZO / PG 9.5kw/127m, 32-13-36/80-50-53

**South Dakota / SD**

**Edgemont** 105.7 NEW / GA, class C1  
**Ellsworth AFB** 104.9 KAWK / PA from Custer, 105.1  
**Murdo** 104.5 NEW / GA from 104.9  
**Wall** 107.7 NEW / GA from 105.5

**Tennessee / TN**

**Chattanooga** 89.7 WDYN / NW 40w/251m (aux)  
**Cleveland** 95.3 WALV / PC>1.05kw-V (was 1.03kw; H power was - and remains - 1.05kw)  
**Lexington** 88.7 WIGH / PC<14kw/164m, 35-43-19/88-36-07  
**Morrison** 105.3 WRKK-FM / PG 4.5kw/84m, 35-37-27/85-53-37; CL from Sparta  
**Rockwood** 105.7 WWSR / PC 490w/345m, 35-55-51/84-49-06  
**South Pittsburg** 97.3 WNGA / CC from WMAX-FM  
**Union City** 105.7 WOAK / PR<94m, 36-31-07/89-05-41

**Texas / TX**

**Archer City** 97.5 KRZB / PR RE>150m, 33-51-40/98-38-52  
**Batesville** 93.5 NEW / PA, class C3, dismissed

**Bishop** 106.9 KMZZ / PC<75m, 27-40-16/97-44-17  
**Bridgeport** 98.3 KBOC / PR>93kw  
**Bryan** 99.5 KNFX-FM / PG>6kw  
**Burnet** 103.9 KBey / PA from 92.5 denied  
**Calvert** 103.9 KXCS / PA from class C2 to C3, CL from Cameron denied

**Cross Plains**  
**Dallas**

106.7 / PA, class A, denied  
 105.3 KLLI / NW 82kw/474m, 32-32-35/96-57-32 (aux)  
**Dilley** 95.3 KVWG-FM / GA from Pearsall  
**Dilley** 106.1 NEW / PA from 93.7 (vacant allotment), dismissed  
 91.1 KQXE / CC for NS  
**Eastland** 106.7 NEW / GA, class A  
**Eden** 98.3 KVLZ / PR>1.1kw dismissed  
**Gatesville** ROA  
 91.1 KANJ / PR<450w  
**Giddings** 88.1 KITG / FC; sold to K-Love  
**Gonzales** 106.3 KQOT / FC; sold to K-Love  
**Gonzales** 103.9 NEW / PA dismissed  
**Grapeland** 92.5 KCOL-FM / PG<31kw/131m, 30-03-43/93-58-50  
**Groves** 103.7 KCDD / PR>453m

**Hamlin**  
**Hempstead**  
**Hereford**

105.3 KEZB / PR 4.6kw/237m  
 103.5 KJNZ / PG>85m, 34-45-00/102-22-54  
**Houston** 94.5 KTBZ-FM / NW 65kw/438m, 29-34-15/95-30-37 (aux)

**Houston** 94.5 KTBZ-FM / PC>65kw/438m (aux)  
**Houston** 99.1 KODA / NW 70kw/465m, 29-34-15/95-30-37 (aux)  
**Houston** 100.3 KILT-FM / NW 76kw/534m, 29-34-15/95-30-37 (aux)  
**Houston** 101.1 KLOL / NW 70kw/465m, 29-34-15/95-30-37 (aux)

**Hutto**  
**Junction**  
**Levelland**

92.1 KOJZ / FC; sold to K-Love  
 98.3 NEW / PA from 104.7 denied  
 105.3 KLVT-FM / PR>50kw/114m, 33-33-01/102-17-33 dismissed ROA

**Lufkin** 98.5 KEOE-LP / NW 92w/31m, 31-23-13/94-46-31  
**Melvin** 106.7 NEW / PA, class A, denied  
**Missouri City** 104.9 KPTY / NS 3.2kw/225m, 29-45-26/95-20-19 (aux)  
**Newcastle** 100.5 NEW / GA, class A  
**Pearsall** 93.3 NEW / GA, class A  
**Pittsburg** 91.1 KGWP / PR<1.1kw-V/59m, 32-57-50/94-55-10

**Pittsburg**  
**Point Comfort**  
**Quitaque**

91.7 KGWP / CC from KKKI  
 94.1 KJAZ / CC from KAJI  
 100.1 NEW / PA, class C3, dismissed - no expression of interest  
**Rockport** 102.3 KKPn / XC 27-52-02/97-13-07  
**Seabrook** 92.1 KROI / PC 21.36kw/526m, 29-17-56/95-14-11  
**Terrell Hills** 106.7 KELZ-FM / NW 6.2kw/276m (aux)  
**Thorndale** 99.3 KLG0 / CC from KJAZ

**Utah / UT**

**North Ogden** 88.7 KNKL / PG>73kw/297m  
**Price** 100.1 KWSA / PG>41m  
**Woodruff** 100.7 KEGH / PR 89kw/647m, 40-52-16/110-59-43; CL from Brigham City

**Virginia / VA**

**Bridgewater** 105.1 WBHB-FM / XC 38-27-08/78-54-32  
**Culpeper** 89.9 WPER / PG 41kw/127m  
**Deltaville** 92.3 WTYD / CC from WSRV  
**Hampton** 103.7 WRPC-LP / CC for NS  
**Iron Gate** 105.7 NEW / PA, class A, denied. Granted 101.9 instead.  
**Iron Gate** 101.9 NEW / GA, class A  
**Louisa** 105.5 WOJL / PR>99m  
**Strasburg** 104.9 WWRT / PR<66m, 39-01-06/78-25-35  
**Strasburg** 104.9 WWRT / PG<66m, 39-01-06/78-25-35  
**West Point** 107.9 WBQK / CC from WTYD  
**Winchester** 91.3 WTRM / PC 5.6kw/427m, 39-11-02/78-23-15

**Washington / WA**

**Aberdeen** 94.3 KYAH-LP / CC from KGHO-LP

East Wenatchee 88.1 KFIO / CC from KTRW-FM  
 Hoquiam 98.5 KHOQ-LP / CC for NS  
 Hoquiam 98.5 KGHO-LP / CC from KHOQ-LP  
 Ilwaco 103.9 KVAS / PR>11kw/151m, 46-10-56/123-48-09  
 Ilwaco 103.9 KVAS / PG 11kw/151m, 46-10-56/123-48-09  
 Olympia 90.1 KPLI / PR>-10m, 47-02-24/122-54-03  
 Seattle 100.7 KKWF / CC from KQBZ  
 Tacoma 88.5 KPLU-FM / PR>72kw/707m  
 Vancouver 105.9 KIJZ / CC from KRVO  
 Vancouver 105.9 KIJZ / PC>12.5kw (aux)

**West Virginia / WV**

Blennerhassett 88.7 WPJY / CC for NS  
 Miami 107.3 WKAZ / FC to "Jack FM"  
 Williamson 96.5 WXCC / PR>56kw/374m, 37-30-06/82-13-39 – likely crossed state line to receive C1 status

**Wisconsin / WI**

De Forest 93.1 WHLK / CC from WHIT-FM  
 Fond du Lac 91.7 WLWR / FC; sold to K-Love  
 Milwaukee 93.3 WJZI / PC 16kw/270m, 43-05-46/87-54-15  
 Mount Horeb 106.7 WSLK / CC from WYZM  
 Plymouth 104.5 WXER / PC 5.1kw/108m  
 Stevens Point 89.9 WWSP / PG>30kw/98m

**Wyoming / WY**

Casper 95.5 KWYY / PR>591m, 42-44-37/106-18-24

Casper 104.7 KTRS-FM / PR>554m, 42-44-37/106-18-24  
 Gillette 99.9 KXXL / PR>51kw, drop DA  
 Gillette 99.9 KXXL / GA from 103.9  
 Lusk 107.7 NEW / PA from 96.3, denied  
 Moorcroft 106.1 NEW / GA from 93.5  
 Pine Haven 99.1 NEW / GA from 99.9  
 Rock River 96.3 KVAN / PA from 95.9, class A to C1  
 Sheridan 89.3 KWCF / NW 1kw/293m, 44-36-10/106-55-42 (CSN)  
 Upton 93.5 NEW / GA from 104.5  
 Wheatland 97.3 NEW / GA, class A, counterproposal to 107.5  
 Wheatland 107.5 NEW / GA from 105.7  
 Wheatland 107.5 NEW / PA, class A, denied (GA 97.3 instead)

**Sources**

**Government:** Canadian Radio-Television and Telecommunications Commission (CRTC), Federal Communications Commission (FCC)  
**Others:** Morris Sorensen, Saul Chernos, Wayne Plunkett

This report includes 417 changes to the FM dial.



-Chris Kadlec  
 FM News Editor

## JVC ANNOUNCES 2ND GENERATION HD RADIO RECEIVER

New CD receiver offers built-in HD Radio tuner.

LAS VEGAS January 5, 2006. JVC puts mobile audio enthusiasts in the digital driver's seat with today's introduction of its second generation HD Radio - CD Receiver, the KD-HDR1. Packed with features, the KD-HDR1 includes a built-in multi-cast capable HD Radio tuner, is satellite radio ready, and Ready for "iPodR", allowing iPod connection, recharging and information display using JVC's KS-PD100 adapter.

For convenient iPod playback, the KD-HDR1 features JVC's new user interface that mimics the iPod's click wheel. A circular front panel control has search and playback functions positioned identically to where they're placed on the iPod click wheel.

The KD-HDR1's MOS-FET power amp delivers 50 watts x 4 maximum (20 watts x 4 RMS). It features SRS CS-Auto, which creates a smooth surround sound effect over a four- or more speaker system with no discernable sweet spot, providing all passengers with an optimal entertainment experience. SRS CS-Auto also includes two patented SRS post processing technologies, Dialog Clarity, which delivers crisp, clear easily-discernable vocals, and TruBassR, which delivers a deep, rich bass sound from any sized speakers.

Other KD-HDR1 features include JVC's Digital Integrated Alignment System (DiAS) tuner, based on a unified chip rather than the more common hard-wired analog tuner to deliver improved reception with only a bare minimum of interference and signal fades to maximize the performance of regular analog broadcasts.

Additionally, with the KD-HDR1's Digital 7-band iEQ, users can boost or cut the level by up to 10dB on each of seven bands (60, 150, 400, 1k, 2.4k, 6k and 15kHz) to customize the overall response according to a car's acoustic environment.

The KD-HDR1 also features a switchable dimmer to enable easier viewing in any light condition and an oval-shaped wireless remote control for one-touch ease of use.

The JVC KD-HDR1 will be available in March and will sell for about \$299.95.



# PHOTO-NEWS

Jeff Kruszka, Editor  
 5024 S. Braxton Ave.  
 Baton Rouge, LA 70817  
 jkruszka@bellsouth.net

February 2006

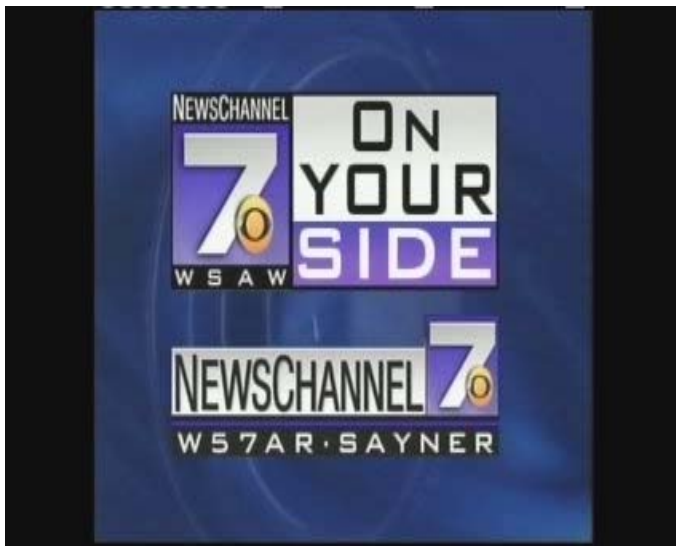
Here's more from Joe Veldhuis of Grand Haven, MI:



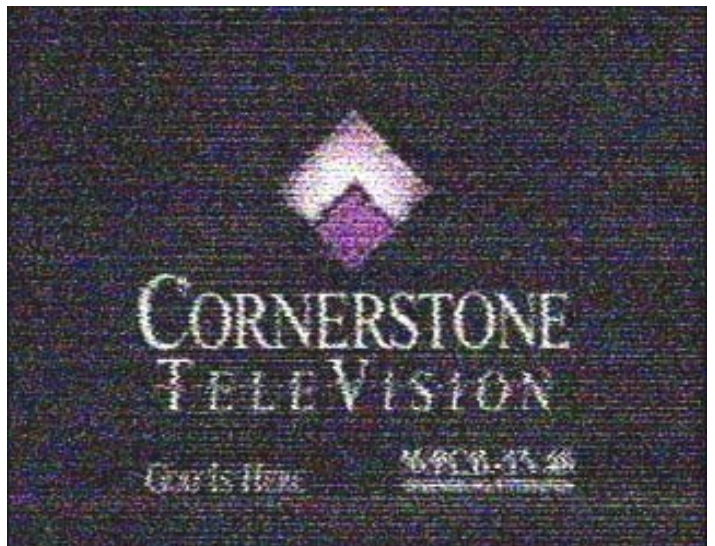
WYOW-34 Eagle River, WI  
 246 mi Tr seen 5/7/05  
 @0651 ET



CBLN-40 London, ON  
 241 mi Tr seen 6/21/05  
 @0336 ET



WSAW-DT-40 Wausau, WI  
 222 mi Tr seen 7/20/05  
 @0429 ET



WPCB-40 Greensburg, PA  
 374 mi Tr seen 10/12/04  
 @1100 ET



WDRB-41 Louisville, KY  
 321 mi Tr seen 7/24/05  
 @0426 ET  
*overpowering local WOTV  
 Battle Creek"*





WIPB-49 Muncie, IN  
199 mi Tr seen 6/1/05  
@0359 ET



KLJB-DT-49 Davenport, IA  
247 mi Tr seen 9/4/05  
@0925 ET



WKON-52 Owenton, KY  
317 mi Tr seen 9/20/04  
@0959 ET



WBX-55 Akron, OH  
253 mi Tr seen 8/26/05  
@0346 ET



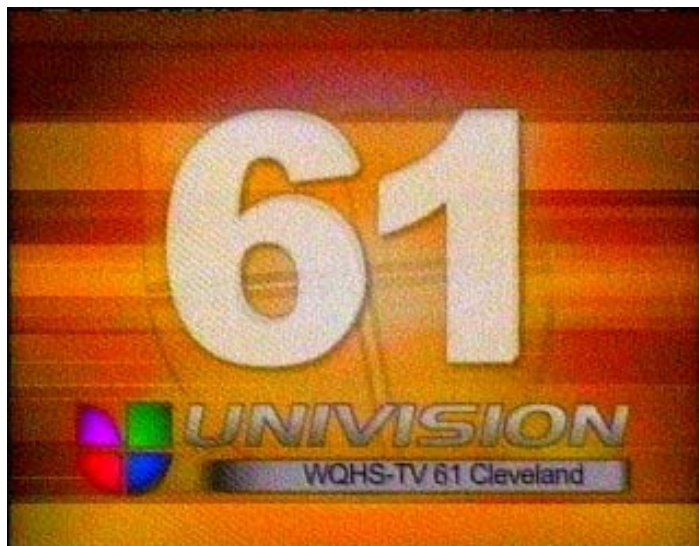
KWWL-DT-55 Waterloo, IA  
294 mi Tr seen 6/20/05  
@0023 ET



WEEK-DT-57 Peoria, IL  
241 mi Tr seen 6/22/05  
@0149 ET



WTJP-60 Gadsden, AL  
635 mi Tr seen 7/24/05  
@0039 ET



WQHS-61 Cleveland, OH  
252 mi Tr seen 8/26/05  
@0955 ET

Remember, folks – it's even better in color, so check out the eVUD at the WTFDA forums! BTW, I'm low on photos so if anyone has something to contribute, send it in now!

Jeff

## A GREAT COMBINATION FOR 2006!



### WTFDA TV STATION GUIDE

To order your copy of the 2005 WTFDA TV Station Guide, send a check or a money order for **\$20.00** payable to WTFDA and send it to John Ebeling, 9209 Vincent Avenue S., Bloomington, MN 55431-2157 **SALE! 60 STILL IN STOCK! GET YOURS NOW!**

(Yes, you can use Paypal. From the Paypal website, click on *send money* and send \$20 to [mbugaj@snet.net](mailto:mbugaj@snet.net). Use the comment box on that page.)



### WTFDA MEXICAN FM RADIO DIRECTORY

To order your copy of the 2005 WTFDA Mexican FM Directory, send a check or money order for **\$7.00** payable to WTFDA and send it to Jim Thomas, 280 Katsura Avenue, Milliken, CO 80543. For more information email Jim at [mrradiohead@wdemail.com](mailto:mrradiohead@wdemail.com)

(Yes, you can use Paypal. From the Paypal website, click on *send money* and send \$7 to [mbugaj@snet.net](mailto:mbugaj@snet.net). Use the comment box on that page.)

FOR YOUR TV AND FM DXING PLEASURE!

### WTFDA EMAIL REFLECTORS

Enhance your DXing experience! Entertaining and informational.

*For WTFDA members and guests on the [wtfda.info](http://wtfda.info) server*

The WTFDA list...send an email to [tvfmdx-subscribe@wtfda.info](mailto:tvfmdx-subscribe@wtfda.info)

180 subs

The WTFDA AM DX list...send to [amdx-subscribe@wtfda.info](mailto:amdx-subscribe@wtfda.info)

80 subs

# Eastern TV-DX

Matthew C. Sittel  
15013 Eureux St.  
Bellevue, NE 68123  
mcsittel@cox.net

February, 2006

March, 2006 column deadline: Feb. 12

Eastern TV-DX is for reporters from the following states: AL, CT, DE, FL, GA, IN, KY, MA, MD, ME, MI, NC, NH, NJ, NY, OH, PA, RI, SC, TN, VA, VT and WV, plus Washington, DC. Also for reporters from the following Canadian provinces: NB, NF, NS, ON, PEI and PQ. Overseas reports welcome!

Ryan Grabow, 1613 Park Meadows Drive #2, Ft. Myers, FL 33907  
<http://www.egrabow.com/dx> (239) 936-6156

ryan@egrabow.com

<u>11/18 tr</u>											
2240	WWSB	40	FL	Sarasota	75	<u>12/21 tr</u>					
<u>11/29 tr</u>						2300	WPTV	5	FL	W. Palm Beach	102
1945	WPLG	10	FL	Miami	111	<u>12/23 tr</u>					
<u>12/1 tr</u>						1100	WEDU	3t	FL	Tampa	90
0010	WFLA	8	FL	Tampa	91		WKMG	6t	FL	Orlando	148
	WTSP	10	FL	St. Petersburg	124	<u>1/1 tr</u>					
	WTVT	13	FL	Tampa	89	0025	WLTW	23	FL	Miami	110
	WUSF	16	FL	Tampa	92		WPBF	25	FL	Tequesta	99
	WFTS	28	FL	Tampa	91		WFLX	29	FL	W. Palm Beach	101
							WTVX	34	FL	Fort Pierce	99

First report from Ft. Myers, FL. I'm using rabbit ears in my second story bedroom so far, looking to upgrade before spring. Every station is a first logging ("premiere") and is only reported once here. Tampa and West Palm Beach will likely become pests as tropes increase, but they're still new DX to me. Full details and stats up on my website! 73z

Bob Seybold, 1865 W. Main Rd., Silver Creek, NY 14136

I am still active but did not have much of DX season. Missed E-skip in May due to heavy workload. Did see E-skip in June mostly from June 25-30-Florida, Gulf States, Texas, Oklahoma, Kansas occasionally getting up to channel 6. In July not much till late in the month, much of above plus Canadian E-skip – Halifax, Quebec, etc. Also some unexpected E-skip in August – even in late month. Overall poor E-skip season here. Tropes was not abundant, some in September and October, nothing past 450 miles. Has a lot of setbacks past year but my health is fine. 73's Bob.

(Thanks for writing, Bob – on behalf of the WTFDA, we're ALL glad to hear from you! – mcs)

Fred Nordquist, 147 Travis Hill Road, Moncks Corner, SC 29461 nordquis@homexpressway.net  
Statistics web page: <http://web.infoave.net/~fmjnnordquist/statistics.html>

Equipment: CM 7' partially screened UHF dish at 30', APS-13 VHF antenna at 25'. Panasonic 13" TV, RS Accurian DTV STB. Winegard AC-4900 UHF preamp, RS rotor, CAC-11 coax lead-ins.

<u>10/14 GW, tr</u>						0055	WUVC-DT	38	NC	Fayetteville	168
0127	WRLK-DT	32	SC	Columbia	84	0055	WUNP-DT	39	NC	Roanoke Rpd.	244
0210	WFMY	2	NC	Greensboro	183	0055	WUNU-DT	25	NC	Lumberton	122
0215	WGHP	8	NC	High Point	179	0055	WRPX-DT	15	NC	Rocky Mount	223
0826	WSOC	9	NC	Charlotte	148	0846	WUFT-DT	36	FL	Gainesville	282
0840	WTVD	11	NC	Durham	188	1012	WNCN-DT	55	NC	Goldsboro	188
0859	WXII	12	NC	Winston-Salem	219	2133	WRAZ	50	NC	Raleigh	188
2247	WWMB	21	SC	Florence	87	<u>10/20 tr</u>					
<u>10/18 GW, tr</u>						2200	W33AL	33	GA	Brunswick, TBN	169
2350	WTVD-DT	52	NC	Durham	188	<u>11/4 tr</u>					
2350	WBTW-DT	56	SC	Florence	87	1907	WUNL	26	NC	Winston-Salem	219
<u>10/19 GW, tr</u>						1918	WBRA	15	VA	Roanoke	275
0005	WOLO-DT	8	SC	Columbia	77	1958	WWWB	55	SC	Rock Hill	163
0005	WFMY-DT	51	NC	Greensboro	183						

<u>11/5 tr</u>					
0100	WFPX	62	NC	Fayetteville	126
<u>11/6 tr</u>					
2004	WTOG	44	FL	St. Petersburg	397
2029	WTTA	38	FL	St. Petersburg	396
2045	WFTS-DT	29	FL	Tampa	396
<u>11/8 tr</u>					
0900	WAXN	64	NC	Kannapolis	148
	"Action 64"				
0945	WRDC	28	NC	Durham	188
0958	WTVZ	33	VA	Norfolk, WB33	316

<u>11/9 tr</u>					
0710	WLCB-DT	46	FL	Leesburg	327
<u>11/13 tr</u>					
2207	WLFL	22	NC	Raleigh	184
2225	W45CO	45	NC	Fayetteville, TBN	142
2305	WUNC-DT	59	NC	Chapel Hill	188
<u>12/4 tr</u>					
2131	WABW	14	GA	Pelham	282
2200	WFXL	31	GA	Albany	262
2300	WTXL	27	FL	Tallahassee	294
2307	WFSU-DT	32	FL	Tallahassee	337
2317	WCTV-DT	46	GA	Thomasville	292

Totals now at 192 including 53 DTVs.

Here's hoping your DX in 2006 is great! Please support ETVDX and the VUD! ..... 73s Matt.



# SATELLITE NEWS

**GEORGE W. JENSEN**  
**4604 ANTANNA AVE, Baltimore, MD 21206-4220**  
**SCISATMAN@AOL.COM**

A number if changes to look at this week.  
 AMC 7 - 137 West no longer has any analogue services with the departure of the Denver 5. This means that there are no longer any audio sub-carriers - e.g. - Wokie - see later for new locations.

Galaxy 13 @ 127 West - as rumored - all Starz/Encore Analogue feeds here have been removed - they do remain on Digital however on Galaxy 1.

The Galaxy 5 at 125 West has been replaced by the new Galaxy 14.  
 Also new - in digital format - are the following - channel 110 - Retro Flex East and 111 - Indie Plex East.

AMC 1 - @ 103 West is the new home of the Denver 5 - now the Denver 8 - channels as follow:

500 - KRMA    501 - KDVR    502 - KWGN  
 503 - KCNC    504 - KUSA    505 - KMGH  
 506 - KBDI    506 - KTVD  
 AMC 4 - 101 West - New - The Albuquerque 6 as follows:-  
 500 - KASA - ch 2 - Fox    501 - KOB - ch 4 - NBC  
 502 - KOAT - ch 7 - ABC    503 - KRQE - ch 13 - CBS  
 504 - KWBQ - ch 19 - The WB  
 505 - KASY - ch 50 UPN

New on digital channel 707 digital on Galaxy 4 Ku Band is BET Jazz

Lastly on Intelsat Americas (formerly Telstar 6) @ 93 West on 973/988 and 999 is Wokie as mentioned earlier

Thats all for this month - See you in 30 and have great DX '73's

*George*

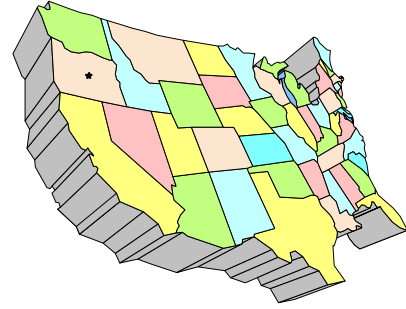
# WESTERN TV DX

DAVE WILLIAMS

3525 SW Timber Ave

REDMOND, OR 97756

beansdad@bendcable.com (541) 420-4704



Please note that handwritten or typed reports *may* be delayed to a future release. If I have time, I'll get them in right away. Thanks.

Sorry to miss a column last month, but a family emergency and heavy workload, plus only 3 reports, caused me to cancel.

Winter Solstice Es was *relatively* unexciting here with the exception of a "boatload of channel 2's" day on 12/26, when the following stations were received here in Central Oregon over the course of 8 hours: XHI XEPM KSNC KASA KCBS KWGN KTWO KACV (+KAMR-4) CKND2 CKCK and CKPG(t) which is one I really want to nail down. MUF hit FM, for a whopping 10 minutes, to AZ.

Only a few more months til the start of Springtime Es!

73, Dave

## Dennis Park Smith

3605 San Remo Drive

Santa Barbara, CA 93105-2523

Telephone (805) 687-7803

*Dennis sent a variety of Tr cx, plus a bandscan from Wasco and a Wasco report. I've paraphrased some of his Tr conditions this month in the interest of having the space to provide the bandscan – ed.*

Coastal tropo to San Diego and Tijuana has improved over what is usually expected at this time of year, with the weather unusually stable at the beginning of the typical rainy season.

Good conditions were found on 11/5 (eve), 11/13, 11/24, 11/28 (brief intense very good conditions on VHF) 12/7, and 12/12 (am). Otherwise, conditions ranged from fair to poor throughout the period.

### Wasco Report:

Once again, I overlooked a new Wasco logging: Oct 30 morning, K08MM 8 Bakersfield (3ABN), probably because of its move to a mountain site along with some Tr enhancement which also improved K24GS 24 Bakersfield (also 3ABN). And, Doug Smith advised me that when K67FS Bakersfield moved to ch. 46, it became K46II (//KCET 28 LA, PBS).

On Nov. 16, there was good tropo from 0800-0900:

22 KGMC-LP Fresno (xmtr Coalinga)  
// KFAZ-CA 8, Azteca, weak offset

CCI from KZMM-22 Fresno at 100 miles)  
24 K24GS Bakersfield (3ABN) 40 miles?  
Audio only; video under KSEE 24 at 85 miles  
57 KNXT-LP Maricopa/Taft 40 miles  
// KNXT-49 relig/educ. In above avg, not sure if tropo or signal upgrade  
64 KTFK(t) Stockton (Mt Diablo) 220 miles  
Weak, not in sync, would be new.  
42 KTNC(t) Concord (Mt Diablo) 220 miles  
Double (+ or -) offset under KPMC-LP Bakersfield at 35 miles.  
19 KUVS Modesto (UNI) 175 miles  
Over KAZB-CA Bakersfield, 0 offset  
31 KMAX(t) Sacramento 215 miles, likely  
Under KBTF-CA Bakersfield, 0 offset

And, more DTV 11/16 with my new RS Accurian HTS-6000 STB: KSEE-DT 38 Fresno (NBC), data only on 10/29, was seen this time with its signal and programs, at 100 miles. Total Wasco DTV: 9.

Here are the results of a mobile bandscan on 10/30 with battery TVs in the Bakersfield/Fresno region at sites in Bakersfield, Wasco, Hanford, Fowler, Fresno, and 2 hill locations near Coalinga. The stations are all listed by city of license from South to North (all California).

Barstow: KHIZ 64

San Luis Obispo: KSBY 6 (NBC)

Maricopa/Taft: KNXT-LP 57 (// KNXT 49 rel-udu)

Bakersfield: KTFB-CA 4 (TF), K08MM (3ABN), KKEY-LP 11 (Telemundo), KGET-TV 17 (NBC), KAZB-CA 19 (//KBFX-CA 58, Fox), K21FP 21 (TBN), KERO-TV 23 (ABC), K24GS 24 (3ABN), KBAK-TV 29 (CBS), KBTF-CA 31 (TF), KJOI-LP 34 (//KVPT 18, PBS), KBFK-LP 36 (America's Store), KABE-39 LP (UNI), KPMC-LP 42 (Azteca), KUVI-TV 45 (UPN), K46II 46 (//KCET 28), KBFX-CA 58 (Fox)

Porterville: K15CO 15 (TBN), KVVG-LP 54 (Alma), KTFF-TV 61 (TF)

Coalinga: KJKG-LP 27 (SAH), KZSC-LP 42 (TBN)

Hanford: KHMM-CA 14 (MasMusica), KFTV 21 (UNI)

Tulare: KFRE-LP 27 not noted, was //KBFX-CA 58

Visalia: KFAZ-CA 8 (Azteca), KMPH 26 (Fox), KMCF-LP 35 (America's Store), KNXT 49 (Rel-Edu)

Reedley: KCWB-LP 13 (Spanish)

Clovis: KGMC 43 (America's Store)

Sanger: KFRE-TV 59 (WB)

Fresno: KVHF-LP 4 (Jewelry/ACN), K12OZ-CA 12 (3ABN), KHSC-LP 16 (HSN), KVPT 18 (PBS), KGMC-LP 22 (xmtr Coalinga, //KFAZ 8), KZMM-CA 22 (Mas Musica), KSEE 24 (NBC), KFSN-TV 30

(ABC), KJEO-LP 32 (A1), KSDI-LP 33 (Videos, MTV2?), KTFF-LP 41 (//KTFF-61, TF), KGPE 47 (CBS), KAIL 53 (UPN), KMSG-LP 55 (Azteca), K56DZ 56 (TBN)  
Merced: KMPH-CA 17 (//KMPH-26, Fox), KNSO 51 (Telemundo)  
Modesto: KUVS-TV 19 (UNI)

Best of DX to all, Dennis

**Jeff Kruszka**

5024 S. Braxton Ave.,  
 Baton Rouge, LA 70817

<u>October 2005</u>				All Times CT
4 tr	0645	KLRT	16 AR	300
		KWBF	42 AR	300
8 tr	1956	KLRT	16 AR	300
	2229	WTJP	60 AL	390
11 tr	2156	KLRT	16 AR	300
		KTHV	11 AR	300
	2325	KASN	38 AR	270
19 tr	0646	XHAB	7 TA	505
	0650	KVDA	60 TX	445
20 tr	1920	XHAB	7 TA	505
	1921	XHTAM	17 TA	535
	1924	KVEO	23 TX	500

November 2005

4 tr	0640	KXAM	14 TX	445
6 tr	2045	WOAI-DT	58 TX	445
	2339	KEYE	42 TX	395
	2358	KNVA	54 TX	395
24 tr	0717	XHTAM	17 TA	535
	0723	KEDT	16 TX	425

December 2005

3 Es	1907	unids 3 NBC, 4 ABC		
4 Es	1810	unid 4 ABC		
21 Es	2000	KDLO	3 SD	1025
	2010	unid 6 CBS, 4 ABC		
	2047	KOTA	3 SD	1150
		KDUH	4 NE	1050
31 tr	2006	KXAM	14 TX	445
		KXAN	36 TX	395
	2008	KEYE	42 TX	395
		KNVA	54 TX	395

**Dave Pomeroy**

2321 SE Libra Ct.  
 Topeka, Kansas 66605-3505  
 weberbosco@earthlink.net

11/8/2005 Tr

2230	19	WHO-DT	Des Moines IA
	50	KDIN-DT	Des Moines, IA
	59	WOI-DT	Ames, IA
			Wichita and Omaha DTVs strong
	35	KHIN-DT	Red Oak, IA

11/11/2005 Tr

0900	32	KOTA-DT	Oklahoma City, OK
	35	KHIN-DT	Red Oak, IA

11/22/2005 Tr

0830	14	KEMG	Sioux City, IA
	32	KELO-DT	Sioux Falls, SD
	47	KDLT-DT	Sioux Falls, SD
	46	KDLT	Sioux Falls, SD

12/4/2005 Es

1700	3	WHSV	Harrisonburg, VA (local newscast, very little CCI)
------	---	------	---

12/14/2005 Ms

2050	3	UNID	Florida weather, 71 degrees in Miami
------	---	------	---

12/21/2005 Es

2220	3	KTVK	Phoenix, AZ
2240	2	KASA	Santa Fe, <u>NM</u> (new state)

12/25/2005 Es

1130	2	WCBD	Charleston, SC
------	---	------	----------------

12/29/2005 Tr

0900	46	KDLT	Sioux Falls, SD
	32	KELO-DT	Sioux Falls, SD
	35	KHIN-DT	Red Oak, IA
0920	14	KMEG	Sioux City, IA
	47	KDLT-DT	Sioux Falls, SD
0930	16	KOOD-DT	Bunker Hill, KS
			(KTAJ-16 and KSNF-16 could be tuned by turning the antenna)
	14	KFJX	Pittsburg, KS very strong
	30	K30AL	Iola, KS

Pretty slow this month (November) with only one new one--KDLT-DT 47 from Sioux Falls. I almost didn't try to ID it as I thought the Win TV-D lit up for DTV channel 47 in nearby Kansas City, Missouri. But the antenna was pointed north and I found KDLT-DT there. During strong tropo from the Wichita area (only 125 miles) I set up one of the Radio Shack STBs for one of my daughters. At first I thought I was also getting Dallas as several Dallas-Ft. Worth stations showed up on PSIP. Never decoded any and the channels were suspicious. Apparently the unit was tested at the Radio Shack headquarters in Ft. Worth. Anyway, it works fine and I have seen several DTVs from the area. No skip noted here in November.

December: I didn't expect to have a report this month but a second failed attempt to go to India kept me in Topeka. At least it resulted in two new Es loggings which is unusual these days. Tropo usually dominates my reports but the highlights are skip this time. Even tried a little Ms DXing this month but no IDs. I used to Ms a lot many years ago and got up early to ID test patterns from the east before local channels 4 and 5 went on in KC. Of course today there are no test patterns and most stations are on 24 hours.

**William Draeb**

1314 Ellis St. Kewaunee, WI 54216-1802  
(920) 388-2350

1994 Sylvania Y1 Chassic, 40' Rohn 25G Tower,  
CH2026, Y713, and KV420 Antennas, CMA-HB  
and CMA-Ub Preamps.

11/3/2005 Tr

1917 4 WBIJ 100 miles

12/4/2005 Es

0800 2-4 UNID East, Canada  
1722 3 WEDU 1174 miles  
1724 3 WSAV 924  
1750 3 XHPN(t) Spanish, zero offset, Univision

logo seen on one of the programs.

1815 4 KWAB(t)  
1825 3 KIII(t)  
1830 4 KBTW 1064, Pt Arthur Doppler Radar  
1847 3 KATC 1013  
5 KALB(t)  
3 KBTX(t)

12/10/2005 Es

1456 2 UNID (+), South, NBC

The Es on 12/4 in the morning started out as Meteor Scatter but the more I watched the more constant it became. Not much Es during December; other DX virtually nil.

73 - Bill

**THE MAILBOX CONTINUES FROM PAGE 3**

One more thing. Every month we have dozens of spare VUDs available to you to pass around at ham meetings, flea markets or wherever people interested in DXing might gather. If you know of an upcoming event and want to give the club some exposure, just email me and we'll mail a quantity to you. Just tell us how many you want.

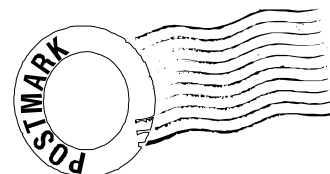
yourself a CD containing every eVUD ever published. eVUDs began in October, 2001 and were published continuously thereafter except for one issue (August 2003) that is missing due to a computer crash. The CD contains October 2001 through December 2005. We've put them all on a CD and we're offering them to you for just \$6.00 (\$5.00 plus shipping). If you are interested, just send \$6.00 to the club address, or email me to use Paypal. I'd like to use the proceeds for a rainy day fund for the Buddy System, the process we use to help out members who can't afford club dues for one reason or another.

That does it for February. Have a great month and we'll see you again in March!



**NEW! eVUDS ON CD**

For those of you with computers, and that's about everyone, here is a chance to buy



**I Want an Update of Your FM and TV Stats NOW**

**FRED WANTS YOU!**

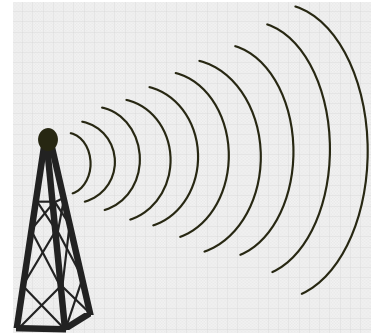
Email in your updated stats to Fred Nordquist at **nordquis at homexpressway.net**

Check out the stats, TV and FM records at <http://home.twcny.rr.com/nordquistsyr/statspage.htm>

If you've never listed your stats before, why not start now!

# Northern FM DX

## Northern FM DX



Keith McGinnis  
6 Ritter Road, Hingham, MA 02043  
longwave@comcast.net 781-875-1944

For Dxers in the following states: CT IA ID IL IN MA ME MI MN MT ND NE NH NJ NY OH OR PA RI SD VT WA WI WY and all of Canada. Please submit by the 10<sup>th</sup> of each month. If possible please submit in the formats shown Below.

**EDITORS NOTE: PLEASE NOTE THAT ANY TYPEWRITTEN OR HANDWRITTEN REPORTS MIGHT BE DELAYED TILL A LATER ISSUE AS TIME PERMITS. ALSO PLEASE KEEP REPORTS AS RECENT AS POSSIBLE (THE LAST 3 MONTHS SHOULD WORK FINE). THANK YOU.**

**EDITORS NOTE PLEASE SUBMIT ALL REPORTS IN THE FORMAT SHOWN BELOW. All Submissions must be in to me by the 10<sup>th</sup> of each month.**

**Ralph Strobel - 106 E. Davidson St. - Muncie, IN 47303  
Equipment: McIntosh MR-78 Tuner with two CM Stereo Probe 9  
antennas and rotors at 38 and 32 feet AGL, with use of Bolin Phase  
Box and RDS.**

### Sept 19 Tr

0230 WFFH 94.1 Smyrna TN gr, "The Fish" 297

### Sept 24 Tr

0113 WGFN 98.1 Glen Arbor MI op 327 (Northern Michigan's Classic Rock, The Bear," phased o/WDFM)  
0142 WJZJ 95.5 Glen Arbor MI k 327 # 200 from Michigan (Northern Michigan's Modern Rock, The Zone," phased o/WFMS)

### Oct 31 Tr

0900 WCLS 97.7 Spencer IN k, ex-92.7 as WSKT 96  
2100 WSDM 92.7 Brazil-Terre Haute IN kr, ex-97.7, "The Crock" 103

### Dec 19 Tr

2200 W230AR 93.9 New Castle IN gr, on air, 250w h,v phased o/WISG 18

(All of the above stations are new)

### Dec 25 Es (MUF 101.1)

1503 KPAC 88.3 San Antonio TX c 1050  
1510 KTFM 94.1 Floresville TX sr, "Jammin' 94" 1054  
1513 KRPT 92.5 Devine TX k, "92.5 The Outlaw"  
1083

(Very brief on FM and all are relogs to the San Antonio area)

This has been a very uneventful fall for FM/TV DXing. Now the FCC is putting translators on top of locals!! Soon, my 101.7 local in Elwood, IN will be gone with an unwanted WJCF xltr on top of it!! Will this nonsense ever end?? 73 - Ralph

**Rick Shaftan  
Neighborhood Research / Mountaintop Media Sparta NJ  
Realistic STA 2280 with 3 150khz filters. 2 APS 14s stagger stacked phased with  
2 APS 13s**

First # at end is mileage, second is bearing. @ means new station. \$ means new prop mode.

7/11/05 Es



1428	KDHX	88.1	St. Louis	MO	RDS PI 18B9	263	826
1730	@KJTH	89.7	Ponca City	OK	Today's Christian Hits,	89.7	The House

7/13/05 Ms/Airplane Scatter

0056	@WEHM	92.9	Southampton	NY	Burst: "EHM" – probable airplane scatter.		
0235	@WJTG	91.3	Fort Valley	GA	"CHNO" on PS PI=170D	225	768
0828	WYUM	101.7	Mt. Vernon	GA	Mount Vernon mention in ad	217	746

7/27/05 Es

1833	@WAYT	88.1	Thomasville	GA	Talahassee mentions, The new 88.1 Way FM		
1834	@WECC	89.3	Folkston	GA	Christian Radio WECC	212	803

7/28/05 Es

1645	KVSC	88.1	St. Cloud	MN	Calls and Minnesota mentions	294	1029
1657	@WVYA	89.7	Williamsport	PA	WVIA contribution pitch	276	122
1703	KDSD	90.9	Pierpont	SD	S D Public Broadcasting	293	1194
1705	Unid	94.5			Rap		
1711	KTWA	92.7	Ottumwa	IA	Today's Hits and Yesterday's Favorites		
1713	KSMB	94.5	Lafayette	LA	RDS PI A4C1	239	1276
1715	KHJZ	95.7	Houston	TX	RDS PI 2364	242	1411
1716	KHMX	96.5	Houston	TX	RDS PI 1012 Houston-area Volvo dealer ad,		
			then Mike Calvert Toyota		242	1411	
1717	WKSO	97.3	Natchez	MS	Kiss 97.3 and mention of Dixie Boys All Star		
			State Playoff		240	1138	
1719	@KROY	99.7	Palacios	TX	KROY ID in mix.	242	1475
1720	KRVS	88.7	Lafayette	LA	RDS PI 3F18	238	1229
1721	KOKF	90.9	Edmund	OK	Sportstalk, phone 460-9136		
1727	???	91.3			npr.org		
1728	KDQN	92.1	DeQueen	AR	Western Sizzlin in DeQueen, RDS PI 1999		
1729	@KASR	92.7	Conway	AR	Cardinals BB	253	1046
1730	KVRE	92.9	Hot Spgs Village	AR	in Downtown Hot Springs	253	1094
1731	KQID	93.1	Alexandria	LA	Q-93	242	1169
1732	KKZR	93.3	Bryant	AR	93.3 The Razor	252	1073
1733	@KOYN	93.9	Paris	TX	"The Shake", "keep listening to the songs and artists you love the most"	254	1241
1734	KKPT	94.1	Little Rock	AR	Today's THV mention, RDS PI1234		
1735	????	94.3			JC and Scott Show and Snoop Dog		
1736	KYKR	95.1	Beaumont	TX	Crossroads Bowling, 899-BOWL	241	1315
1736	KSSN	95.7	Little Rock	AR	Kissin Prize Booth	252	1061
1737	KWHF	95.9	Harrisburg	AR	Wolf Country, Fletcher Honda Mazda		
1738	KHLS	96.3	Blytheville	AR	Wilcoxsin's Home Place and Appliance, 901 South Bypass in Kennett, Missouri, Thunder Country 96.3	252	894
1738	KFNC	97.5	Beaumont	TX	RDS PI 1E88	241	1318
1739	#KJSM	97.7	Augusta	AR	Jimmy Swaggert style Christian pgm.		
1741	WMC	99.7	Memphis	TN	Binion's in Tunica. RDS PI 999E	250	920
1742	KNRB	100.1	Atlanta	TX	Country Gospel	251	1194
1743	KMSX	94.9	Maumelle	AR	Mix 94.9 is today's hits	250	1059
1745	KQUS	97.5	Hot Springs	AR	Great Country Favorites, US-97	252	1105
1747	KZHE	100.5	Stamps	AR	Right here on KZHE	249	1146
1751	KYYK	98.3	Palestine	TX	that's your forecast on the best in Texas, x	249	1320
			Kick 98				
1752	KTPB	88.7	Kilgore	TX	The World is next on KTPB	249	1275
1754	KVNE	89.5	Tyler	TX	Commercial free Christian Radio for the Ark-La-Tex, KVNE Tyler-Longview		
1757	KDAQ	89.9	Shreveport	LA	Red River Radio	249	1208
1808	KCUL	92.3	Marshall	TX	Mexican Mx.	249	1236
1809	KTKC	92.9	Springhill	LA	Black Gospel	248	1173
1810	????	93.1			Whiny music		
1810	????	93.3			Sportstalk, Houston mentions		
1811	KXKS	93.7	Shreveport	LA	Kiss Country 93.7	249	1208
1812	KRUF	94.5	Shreveport	LA	Saturn of Shreveport ad	249	1208
1817	KLNE	88.7	Lexington	NE	RDS PI 2E62	277	1295
1819	KAFR	88.3	Conroe	TX	RDS PI 95E1	245	1315

7/29/05 Es

1800	KHGN	90.7	Kirksville	MO	KHGN, Box 500 Kirksville MO	272	938
1802	@KJCV	89.7	Country Club	MO	Bott Radio Network	272	1079
1803	KXCV	90.5	Maryville	MO	Missouri/Iowa news	274	1058
1810	WHBM	90.3	Park Falls	WI	RDS PI 674A	299	852

1812	WSCD	92.9	Duluth	MN	Classical	301	953		
1813	@KXXR	93.7	Minneapolis	MN	Metal	294	971		
1813	@WDOR	93.9	Sturgeon Bay	WI	...road, Sturgeon Bay.		297	696	
1815	WRJO	94.5	Eagle River	WI	Eagle River Café, Highway		70W in Eagle		
					River	300	816		
1815	KQDS	94.9	Duluth	MN	RDS PI 3AA0	301	953		
1816	@KDNW	97.3	Duluth	MN	Good afternoon, KDNW...		301	953	
1817	@KTCO	98.9	Duluth	MN	98.9 KTCO	301	953		
1818	KSTZ	102.5	Des Moines	IA	Today's Best Variety Star	102.5		280	982
1819	WAQE	97.7	Barron	WI	Ammonton's in downtown Rice Lake				
					and Chippewa Falls	296	913		
1820	@CBON-18	88.1	Sault Ste. Marie	ON	FF	312	615		
1821	CKSB-9	89.1	Fort Frances	ON	FF	305	1068		
1823	@WLSN	89.7	Grand Marais	MN	Minnesota Public Radio News	306		901	
1827	@KNOR	93.7	Krum	TX	Party 93.7, Urban	255	1360		
1834	CBQQ	90.5	Fort Frances	ON	Ontario wx. Another Canadian w/EE				
			underneath		306	1068			
1836	CBON-20	89.3	Thunder Bay	ON	FF	311	881		
1840	KBLB	93.3	Nisswa	MN	Vicki Lawrence at the Grand Casino				
					Hinckley. B-93.3	298	1051		
1851	WELY	94.5	Ely	MN	Twins-Red Sox Game		306	969	
1852	@KNSG	94.7	Springfield	MN	hitsandfavorites.com	290	1071		
1903	WTIP	90.7	Grand Marais	MN	WTIP weather	306	901		
1907	@WOLV	97.7	Houghton	MI	CSNY on Classic Hits, the best music of the				
					60s, the 70s and the 80s	306	807		
1912	CBW	98.3	Winnipeg	MB	Canadian talk show	307	1239		
1915	KDLO	96.9	Watertown	SD	RDS PI 1918	290	1186		
1917	KNBJ	91.3	Bemidji	MN	Twin Cities Puppetfest 2005	302	1078		
1918	????	91.3			Election reports from reelected				
					Representative Elmer Peterson and Frank				
					Sheehan, VFW in Rice Lake				
1925	KNSW	91.7	Worthington	MN	Minnesota Public Radio News //91.3				
1930	KRSD	88.1	Sioux Falls	SD	Minnesota Public Radio	286	1138		
1938	KRUE	92.1	Waseca	MN	State Street Bistro in Waseca	289	974		

7/30 Ms

1109	WJSP	88.1	Warm Springs	GA	RDS PI 6E4F	228	790		
------	------	------	--------------	----	-------------	-----	-----	--	--

7/31/05 Ms

1158	????	101.7			Promo for Chop Shop Radio -- Ms				
2009	KCMO	94.9	Kansas City	MO	RDS PI 168E	270	1060		

8/2/05 Es

1715	WQST	92.5	Forest	MS	RDS PI A8CF	238	1011		
1718	WMAW	88.1	Meridian	MS	RDS PI 75EB MPB	237	1007		
1720	WPAE	89.7	Centreville	MS	across Louisiana and Mississippi. 800-324-				
					1108	239	1140		
1721	@WQVI	90.5	Forest	MS	theevangeltemple.com 601-917-3177				
1729	WWNO	89.9	New Orleans	LA	This is WWNO 89.9 your great station for				
					classical music	234	1148		
1730	WRBH	88.3	New Orleans	LA	New Orleans mention	234	1148		
1731	WBSN	89.1	New Orleans	LA	Lifesong RDS PI 592D	234	1148		
1736	WKZW	94.3	Sandersville	MS	The Pine Belt Temperature is 92 at KZ-94				
1737	WGMZ	93.1	Glencoe	AL	The big WAAX sports attack, Saturday				
					mornings at 8 and 570 AM, the Big WAAX,				
					Classic Hits Z-93.1	236	784		
1739	WXHB	96.5	Richton	MS	The Pine Belt's Solid Gospel 96.5				
1745	@KBZZ	96.7	Morgan City	LA	Soft Rock. Your work station for the Tri-				
					Parish. Louisiana National Guard ad				
1750	WKCX	97.7	Rome	GA	RDS PI 6F5B, K-98	234	744		
1752	WRAX	100.5	Northport	AL	X@100.5 RDS PI 81A3	237	898		
1753	WLMG	101.9	New Orleans	LA	RDS PI 72F2	234	1148		
1754	WKZN	105.3	Kenner	LA	RDS PI 71A7	234	1147		
1755	KCIL	107.5	Houma	LA	C-107.5 KCIL Houma	234	1185		
1757	WPAS	89.1	Pascagoula	MS	afa.net	231	1060		
1758	WPSM	89.1	Ft Walton Beach	FL	Psalm FM WPSM	226	993		
1759	WRWA	88.7	Dothan	AL	For more information, call 334-244-3337.				
1800	????	90.3			Sounded like WLAH				
1802	@W201CZt	88.1	Clinton	SC	"...1490 AM Guthrie, Oklahoma..." Jimmy x				
					Swaggert SONLIFE network	224	598		
1806	WFFY	92.1	Destin	FL	The Emerald Coast's Party Station, Fly 92.1				
1809	93.3	WQUE	New Orleans	LA	Q-93, the best in Hip-Hop and R&B, Baby,				
					RDS PI 101E	234	1148		
1810	94.7	WOPR	Lacombe	LA	Black Gospel	234	1126		

1845	????	91.3			American Family Radio. Turning Point with Dr. David Jeremiah...A presentation of the Christian Law Association
1848	@WAQG	91.7	Ozark	AL	Southeast Family Health Care, just two miles North of Troy State Dothan on Highway 231 South 226 898
1850	@KLCU	90.3	Ardmore	OK	Morning Edition on KCCU 257 1314
1851	KFXT	90.7	Sulphur	OK	Solid Gospel 800-357-8750 256 1094
1858	????	90.9		TX	Texas Rangers on sports. Goodnews verse.
1900	KHCP	89.3	Paris	TX	Thanks for praying for KHCB 253 1241
1943	KIPR	92.3	Pine Bluff	AR	Power 92 250 1060
1944	????	96.3			Country
1949	????	94.9			Christian
1950	????	89.7			Adventures in Odyssey
1954	????	90.9			Crown Financial Ministries
2008	KITE	93.3	Port Lavaca	TX	Country, KITE
2046	WRBH	88.3	New Orleans	LA	Biloxi Casino, Tammany Twirlers 234 1134
2055	KVRK	89.7	Sanger	TX	Powerfm. RDS PI 43C8 255 1325
2059	KSYE	91.5	Frederick	OK	here on 91.5 KSYE 259 1395
2110	????	88.3			Leading the Way

8/3/05 Es

0920	KMXV	93.3	Kansas City	MO	RDS PI 321B Mix 93.3 270 1057
0952	KOMA	92.5	Oklahoma City	OK	RDS PI 3630 261 1290
0952	KSD	93.7	St. Louis	MO	RDS PI 9994 The Bull 264 868
0955	@KBTN	99.7	Neosho	MO	joplinhelpwanted.com 261 1095
1000	KIZS	92.1	Broken Arrow Station	OK	RDS PI 278C, Kiss-FM, Tulsa's #1 Hit Music 261 1201
1002	KBEZ	92.9	Tulsa	OK	RDS PI 1325 261 1201
1003	KKNG	93.3	Newcastle	OK	Country, Dwight Yokum 260 1309
1004	KTSO	94.1	Glenpool	OK	RDS PI 440E 260 1213
1006	KTTS	94.7	Springfield	MO	RDS PI 442C 262 1019
1007	KHBZ	94.7	Oklahoma City	OK	RDS PI 22AF 261 1291
1008	????	99.7			RDS PI 1A29
1017	KAMO	94.3	Rogers	AR	US 94 260 1086
1018	KIGL	93.3	Seligman	MO	RDS PI 25C7 Eagle 260 1095
1019	KUAF	91.3	Fayetteville	AR	Fayetteville ad 258 1105
1047	WRMB	89.3	Boynton Beach	FL	89.3 WRMB 200 1050
1048	WLRN	91.3	Miami	FL	RDS PI 737B 199 1086
1049	WCMQ	92.3	Hialeah	FL	RDS PI 5B38, Classica 92 199 1100
1049	WLVE	93.9	Miami Beach	FL	RDS PI 1126 199 1088
1050	WZZR	94.3	Riviera Beach	FL	RDS PI 9947 200 1017
1050	WXDJ	95.7	No Miami Beach	FL	RDS PI 91BB, Spanish 199 1100
1050	WRTQ	98.3	Goulds	FL	SS 199 1120
1051	WAYF	88.1	West Palm Beach	FL	Way FM 200 1030
1051	WAYJ	88.7	Fort Myers	FL	DeAngelis Diamond Homes, SW FL
1111	WIRP	88.3	Pennusco	FL	SS Rel 200 1098
1118	????	93.9			Pat Robertson thru Miami
1120	WZTA	94.9	Miami Beach	FL	Hurban 199 1088
1122	WKX	92.9	Charlotte Harbor	FL	Kix Country 92.9 205 1063
1125	WLTQ	92.1	Venice	FL	RDS PI 73B2 208 1056
1138	????	94.9			Soul
1140	WUSF	89.7	Tampa	FL	89.7 WUSF 208 1007
1150	WJIS	88.1	Bradenton	FL	joyfm.com 207
1157	????	89.1			solidsounds.org

8/4/05 Ms

0016	WLJK	89.1	Aiken	SC	RDS PI 72A8 219 658
------	------	------	-------	----	---------------------

8/7/05 Es

1822	KRVS	88.7	Lafayette	LA	RDS PI 3818 238
1229					
1825	KSMB	94.5	Lafayette	LA	RDS PI A4C1 238
1229					
1829	????	91.7			Black Gospel
1830	????	91.7			AFR
1831	????	92.1			Mexican Mx.
1832	KCOL	92.5	Groves	TX	Cool 92.5 241 1317
1859	KAYT	88.1	Jena	LA	Gospel Radio at it's very best 242 1188

8/8/05 Es

0939	WMAW	88.1	Meridian	MS	RDS	237	1007		
1014	????	93.1			Black Gospel				
1015	@KAGL	93.3	El Dorado	AR	Rogers Electric of El Dorado	248		1124	
1016	????	88.9			NPR, maybe needed El Dorado				
1020	KWYN	92.5	Wynne	AR	Old Sawmill Café in Forest City, AR				
1023	WMFS	92.9	Bartlett	TN	Stern, RDS PI 74EC	250	923		
1953	KCUR	89.3	Kansas City	MO	RDS PI 1761	270	1055		
1954	WIPA	89.3	Pittsfield	IL	RDS PI 8A5A WUIS-FM		269	848	
1955	KCCV	92.3	Olathe	KS	Bott Radio Network	270	1076		
1956	KAYX	92.5	Richmond	MO	Bott Radio Network	269	1019		
1957	KMXV	93.3	Kansas City Station	MO	RDS PI 321B, Kansas City's #1 Hit Music				
					270	1057			
1958	WIBW	94.5	Topeka	KS	RDS PI 69F8	270	1138		
1959	KRBZ	96.5	Kansas City	MO	RDS PI 3D17, The Buzz	270	1057		
2000	KICK	97.9	Palmyra	MO	Kick FM	270	889		
2002	KYYS	99.7	Kansas City	MO	RDS PI 51E2 PS KY!	270	1057		
2007	????	100.1			Religion				
2009	KQRC	98.9	Levenworth	KS	RDS PI 3BFC, 98.9 The Rock	270	1060		
2010	KCHZ	95.7	Ottawa	KS	All the hits, Z 95.7	270	1084		

9/11/05 Tr

0145	@WUUF	103.5	Sodus	NY	Today's Hot New Country	320	201		
1151	@CHCQ	100.1	Belleville	ON	Cool 100. Bayview Auto Sales on Highway 2				

10/2/05 Tr

2247	@CKNX	101.7	Wingham	ON	FM-102	304	395		
2303	@CBLA-FM-3	100.9	Wingham	ON	CBC Radio 1		304	395	

10/4/05 Tr

0117	@WVOM	103.9	Howland	ME	Coast to Coast		46	425	
0329	@CIDC	103.5	Orangeville	ON	//MTS	306	344		
1049	@WUBB	95.3	York Center	ME	The Bee 95.3		52	253	

12/4/05 Es

1745	KTBT	92.1	Broken Arrow	OK	RDS PI 4259		262	1206	
1753	KOMA	92.5	Oklahoma City	OK	KFOR Weather		261	1290	

12/6/05 Es

1053	????	89.3			MOPS International				
1057	????	88.3			SS				
1100	@WSTF	91.5	Andalusia	AL	WSTF Andalusia and WDYF Dothan, Faith				
					Radio	229	934		
1108	WBLX	92.9	Mobile	AL	Rap	229	1030		
1110	WPGG	93.3	Evergreen	AL	Power Pig	230	951		
1115	WIKX	92.9	Charlotte Harbor	FL	Kix Country 92.9	205		1063	

Total up to 2791.

**Keith McGinnis - 6 Ritter Road – Hingham MA 02043**

[longwave@comcast.net](mailto:longwave@comcast.net)

**Equipment: Modified Yamaha T-85 Tuner, 2 APS 9B antennas (at 35ft and 12 ft AGL) with the Bolin Phase Box.**

January 16, 2006 Es

1750	WMYB	92.1	Myrtle Beach	SC	many Myrtle Beach mentions and weather				
1756	WFCH	88.5	Charleston	SC	// to Family Radio webstream				
1800	WAGP	88.7	Beaufort	SC	mention of Jasper Hampton Health Care..."The Light"				

# 6 Meter/2 Meter Amateur DX



50 Mhz  
The *Magic* Band



**Peter Baskind, N4LI**  
3225 Forest Hill-Irene Rd  
Germantown, TN 38138  
N4LI@ARRL.net

The Christmas/New Year Season for Sporadic-E has come and gone. Most folks I have spoken with found it somewhat disappointing. Here in Memphis, the Season popped up in early December. For me, the openings were unimpressive, and the Season brought no new grids. Most contacts were to the Eastern Seaboard or the Desert Southwest – very routine stuff. I won't waste ink on passing on loggings. I did miss a couple of days of apparently routine E<sub>s</sub> while I was out of town in EM63 over Christmas.

Spring will be here soon! Hopefully, that means tropo will come along with it. January is turning out warm, and openings are starting, so maybe in the next few weeks, we'll be seeing fun 2m stuff through the troposphere.

Congratulations to Bill Smith in Massachusetts. As of January 7, he became W1OW, after sitting in the FCC cue after Hurricane Katrina. This month's loggings will be his last as a "2x3!"

## Loggings

**Bill Smith, WA1NYV, 56 Locust Street, Douglas, MA 01516 FN42**

A disappointing December – definitely not as good as last year. But, only one major snowstorm, so that was good.

In general, most openings were much better in the Canadian Maritimes and the Mid-Atlantic States, either north or south of me. [No kidding... I have seen many paths maps recently with the midpoint right over my head! –ed.]

3 Dec '05

Minor Es to the South

1545	WA5UUD	EM64	2127	N4CRL	EM77
------	--------	------	------	-------	------

4 Dec '05

0232	N5BO	EM60	1636	KI4KVS	EM64
1627	W4WFX	EM86	1643	K8KFJ	EM98
1628	KF4TVL	EM95	1645	K5WBX	EM44
1630	KF4UBK	EM83	1645	KB8TGH	EM98
1631	WD4CQ	EM95	1650	W4AXT	EM53
1631	KI0YQ	EM83	2043	WB4GTB	EM73
1632	NY4N	EM66	2047	N4JBK	EM90
1636	KF4TVI	EM95	2227	KC0TCQ	EN41

(Just 2 watts)

5 Dec '05

0153	KG4GTR	EL95
------	--------	------

11 Dec '05

0346	KU4WW	EM54	0356	K4VMV	EM73
0350	K4UAD	EM86	0358	KB5RZD	EM51

24 Dec '05

Opening to the N/NE. Many signals going over me. Band finally opened to Midwest.

1443	N9NMH	EN54	1559	K0KKO	EM48
1506	N0USG	EN34			

Christmas Day, 25 Dec

1510	KC0KGZ	EN10	1611	KE5FWT	EM46
1512	N0AFT	EM46	1617	K5DNL	EM15
1527	KI4JHT	EM63			

---

### **Consumers On Future HD Radio Displays: Nearly 90 % Prefer "Expanded Band"**

According to a qualitative research study conducted in the past 30 days, almost nine out of ten consumers would prefer seeing HD radio supplemental stations displayed as "expanded bands" instead of "layered bands."

In the national study, conducted by Bob Harper & Company and funded by Cox Radio, consumers in 12 separate focus groups were asked to discuss two possible options to display new radio stations addresses made possible by HD technology. One option would have new station addresses appear on an expanded FM band above 107.9 (i.e. new HD stations would appear as 108.1, 108.3 or 108.5). Another option would have new stations appear under existing radio stations in a layered band (i.e. new stations would appear as 98.5 HD-2, 98.5 HD-3 or 98.5 HD-4).

In each of the focus groups, consumers overwhelming preferred the expanded band approach of displaying new HD radio stations. The combined results of the focus groups showed that 136 of the 156 (or 87.2 percent) respondents chose the expanded band approach over the layered approach.

"This is a somewhat unusual result from focus groups in general," said Bob Harper. "An overwhelming percentage of respondents chose the expanded band over the layered approach. In fact, in four of the sessions, the scores were 12-0, 13-0, 13-0 and 13-0 in favor of the expanded band. Typically in a focus

group setting – where there is a lot of open dialogue and give-and-take – respondents often can see the positives in more than one alternative; especially as they hear the pros and cons of one option over another. But there was very little equivocation in our three cities."

"These findings were so conclusive that broadcasters and equipment manufacturers would only ignore them at their peril," Harper added.

"As the industry moves aggressively to launch HD radio, it is important that radios manufactured in the future be consumer friendly and clearly display the many new exciting stations that will come online with HD technology," said Bob Neil, CEO of Cox Radio, Inc. in explaining the rationale for the consumer research. "We realize that while the first radios that will be available for consumers to purchase will have the layered display, we believe that the industry, working closely with receiver manufacturers, will use this research to develop an orderly transition plan to the expanded band as the HD radio receiver evolves and develops."

Bob Harper has been invited to present the results of this study at the next National Radio Standards Committee meeting in January 2006 at the Consumer Electronics Show in Las Vegas. (Thanks to Bob Cooper for this item

## SIGN UP/Renewal form

Name \_\_\_\_\_

Address \_\_\_\_\_ Apt # \_\_\_\_\_

City \_\_\_\_\_ State/Prov \_\_\_\_\_ Zip \_\_\_\_\_

Country \_\_\_\_\_ Interests: TV ( ) FM ( ) 30-50( ) Weather( )

email address \_\_\_\_\_

Sign me up/renew me for: 1 year ( ) 2 years ( ) More ( )

Yearly dues \$24 (US), \$26 to (CANADA), \$10 (Electronic VUD)  
(Students get a discounted rate of \$15 yearly for the paper VUD.)

**Mail your dues to: WTFDA, P.O. Box 501, Somersville, CT USA 06072**

**Make your checks/money orders payable to: WTFDA**

**And *thanks* for your support of the WTFDA!**

Return this form with your dues or make a copy of it and return that.

### WTFDA BOARD OF DIRECTORS

Mike Bugaj, use the WTFDA Mailing address listed below	mbugaj@snet.net
Doug Smith, 1385 Old Clarksville Pike, Pleasant View, TN 37146-8098	w9wi@w9wi.com
Greg Coniglio, 11825 Genesee St., Alden, NY 14004	wgrc@rochester.rr.com
Bruce Hall, 5 Stirton Ave., Brantford, ON N3T 1E2	dbruceaa@hotmail.com
Keith McGinnis, 6 Ritter Road, Hingham, MA 02043	longwave@comcast.net

### THE MAILBOX and all general club correspondence:

Mike Bugaj at WTFDA, PO Box 501, Somersville, CT 06072	mbugaj@snet.net
--	-----------------

### SATELLITE NEWS

George Jensen, 4604 Antana Ave., Baltimore, MD 20206-4220	scisatman@aol.com
---	-------------------

### TV NEWS

Doug Smith, 1389 Old Clarksville Pike, Pleasant View, TN 37146-8098	w9wi@w9wi.com
---	---------------

### FM NEWS

Chris Kadlec, 3860 Shorewood Dr., Fremont, MI 49412	ckadlec@beaglebass.com
---	------------------------

### PHOTO NEWS

Jeff Kruszka, 5024 S. Braxton Ave., Baton Rouge, LA 70817	jkruszka@bellsouth.net
---	------------------------

### EASTERN TV DX

Matt Sittel, 15013 Eureux Circle, Bellevue, NE 68123	mcsittel@cox.net
--	------------------

### WESTERN TV DX

Dave Williams, 3525 SW Timber Ave., Redmond, OR 97756	beansdad@bendcable.com
---	------------------------

### SOUTHERN FM

John Zondlo, 4009 Driftwood Cir., Yukon, OK 73099	sfm@fmdxweb.com
---	-----------------

### NORTHERN FM

Keith McGinnis, 6 Ritter Rd., Hingham, MA 02043	longwave@comcast.net
---	----------------------

### TV and FM STATISTICS

Fred Nordquist, 147 Travis Hill Road, Moncks Corner, SC	nordquis@homexpressway.net
---	----------------------------

### 6 METER/2 METER

Peter Baskind, 3225 Forest Hill-Irene Rd, Germantown, TN 38138	n4li@arrl.net
--	---------------

<b><u>BACK ISSUES</u></b> Dave Nieman, PO Box 17, Clarence, NY 14031-0017	nieman@localnet.com
---	---------------------

*We have a large selection available for \$1.00 each. Email or write Dave for availability.*

<b><u>WEBSITE</u></b> Tim McVey Webmaster <a href="http://www.anarc.org/wtfda/">http://www.anarc.org/wtfda/</a>	tkmcvey@erols.com
---	-------------------