

# VHF-UHF DIGEST

The Official Publication of the Worldwide TV-FM DX Association

JUNE 2009

The Magazine for TV and FM DXers



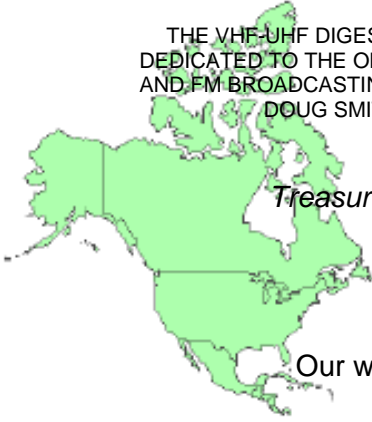
## WAITING FOR THE 12TH

Visit Us At [www.wtfda.org](http://www.wtfda.org)

# THE WORLDWIDE TV-FM DX ASSOCIATION

*Serving the UHF-VHF Enthusiast*

THE VHF-UHF DIGEST IS THE OFFICIAL PUBLICATION OF THE WORLDWIDE TV-FM DX ASSOCIATION DEDICATED TO THE OBSERVATION AND STUDY OF THE PROPAGATION OF LONG DISTANCE TELEVISION AND FM BROADCASTING SIGNALS AT VHF AND UHF. WTFDA IS GOVERNED BY A BOARD OF DIRECTORS: DOUG SMITH, GREG CONIGLIO, BRUCE HALL, KEITH MCGINNIS AND MIKE BUGAJ.



*Editor and publisher:* **Mike Bugaj**

*Treasurer:* **Keith McGinnis** wtfda.org Webmaster: **Tim McVey**

wtfda.info Site Administrator: **Chris Cervantez**

*Editorial Staff:* **Jeff Kruszka, Keith McGinnis, Fred Nordquist, Nick Langan, Doug Smith, Peter Baskind, Bill Hale and John Zondlo,**

Our website: [www.wtfda.org](http://www.wtfda.org); Our forums: [www.wtfda.info](http://www.wtfda.info)

JUNE 2009



Finally! For those of you online with an email address, we now offer a quick, convenient and secure way to join or renew your membership in the WTFDA from our page at:

<http://www.wtfda.org/join.html>

You can now renew either paper VUD membership or your online eVUD membership at one convenient stop. Use the link above to either join the WTFDA or renew your membership in North America's only TV and DX organization.

## CONTENTS

Page Two	2
Mailbox	3
TV News...Doug Smith	4
FM News...Bill Hale	10
Photo News...Jeff Kruszka	19
Southern FM DX...John Zondlo	21
Eastern TV DX...Nick Langan	23
Western TV DX...Nick Langan	24
6 meters...Peter Baskind	28
The Days of Analog TV	30
May 2009 Meteor Scatter Chart	35

Northern FM DX will return next month if you send Keith your reports.

## FIND US FAST! WTFDA BOARD OF DIRECTORS

Mike Bugaj, use the WTFDA Mailing address listed below  
Doug Smith, 1385 Old Clarksville Pike, Pleasant View, TN 37146-8098  
Greg Coniglio, 11825 Genesee St., Alden, NY 14004  
D.Bruce Hall, 5 Stirton Ave., Brantford, ON N3T1E2 Canada  
Keith McGinnis, 18 Newbridge St., Hingham, MA 02043

mikeb@wtfda.org  
dougs@wtfda.org  
[gregc@wtfda.org](mailto:gregc@wtfda.org)  
dbruce@wtfda.org  
[nfmdx@wtfda.org](mailto:nfmdx@wtfda.org)

\*\*\*\*\*

### THE MAILBOX and all general club correspondence:

Mike Bugaj at WTFDA, PO Box 501, Somersville, CT 06072

mikeb@wtfda.org

### TV NEWS

Doug Smith, 1389 Old Clarksville Pike, Pleasant View, TN 37146-8098

dougs@wtfda.org

### FM NEWS

Bill Hale, 6124 Roaring Springs Drive, N. Richland Hills, TX 76180

fmnews@wtfda.org

### PHOTO NEWS

Jeff Kruszka, 1909 Lost Lake Pl., Pearland, TX 77581

jeffk@wtfda.org

### EASTERN AND WESTERN TV DX

Nick Langan, 1040 Riverview Dr., Florence, NJ 08516

nickl@wtfda.org

### SOUTHERN FM

John Zondlo, 4009 Driftwood Cir., Yukon, OK 73099

southernfmdx@wtfda.org

### NORTHERN FM

Keith McGinnis, 18 Newbridge St., Hingham, MA 02043

nfmdx@wtfda.org

### TV and FM STATISTICS

Fred Nordquist, 147 Travis Hill Road, Moncks Corner, SC

stats@wtfda.org

### 6 METER/2 METER

Peter Baskind, 3225 Forest Hill-Irene Rd, Germantown, TN 38138

ag4ki@yahoo.net

WEBSITE Tim McVey Webmaster <http://www.wtfda.org>

webmaster@wtfda.org

June 2009....the END of analog TV broadcasting.



# The Mailbox

P.O. Box 501, Somersville, CT USA 06072  
MIKE BUGAJ MBUGAJ@SNET.NET

## DOWN TO THE WIRE

Once upon a time we thought it would last forever. But nothing lasts forever. For better or for worse and for reasons that we may or may not agree with, analog television turns off on the 12<sup>th</sup> of the month.

We've already had a mini E skip season in May so we've had one last chance to re-log some of our favorite TV E skip targets.

In certain areas there has been some tropo around so some of us have been able to log a few analog channels one last time.

In a few days, it all will be history.

Some say that the second golden age of TV DXing is about to begin. They could be wrong, but might they possibly be correct?

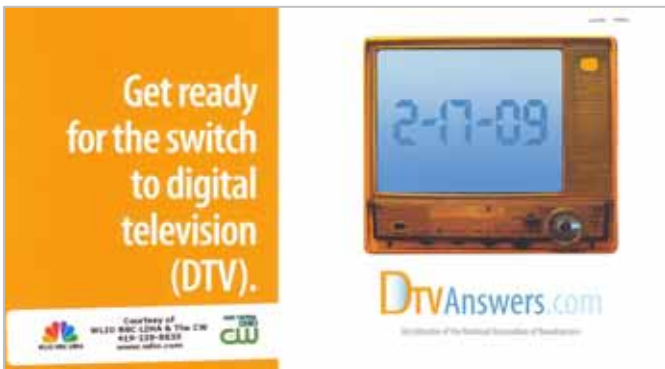
What do you think? Check back next month and we'll begin to sort it out.

## MEMBERS AND MORE

This month we welcome **Michael Beu**, **William Liles** and **Lewis Kruger** to the WTFDA. Michael lives in Austin, TX, William is from Reston, VA and Lewis is in Sioux Falls, SD. Welcome all to the WTFDA!

Renewals were received during the period from 4/15 to 5/13 from **Fritze Prentice** (AR), **William Thompson** (MD), **Gary Hickerson** (OK), **Bill Dvorak** (WI), **Peter Baskind** (MS), **Tom Colyard** (FL), **Gray Fulk** (NC), **Brandon Jordan** (TN), **Robert Delaney** (IL), **Tim Alderman** (CA), **Jacob Norlund** (MN), **Fred Nordquist** (SC), **Jerry Bond** (NY), **Ken Onyschuk** (IL), **Jay Novello** (NC), **Nick Langan** (NJ) and **John Hanna** (IL). Thank you all for supporting the WTFDA!

## I WONDER



I wonder if items like this will ever be worth anything. Who know how much was spent printing up these brochures, only to have the date switched at the last minute.

## FOUND IT!

Here you go. Use this on your next antenna or rotor order and save big money!



## SO WHAT'S LEFT?

Analog TV DXing is not completely finished. Remember that Canadian TV has two more years before they switch. Mexico isn't doing anything anytime soon either. Don't forget that LPTVs and translators will still be there. Check Doug Smith's website (w9wi.com) to see what's left. You'll find a few dozen translators and LPTVs for channel 2. Granted that most of them have only a few watts but some of them could possibly be seen via E skip. You never know.

We're told that double hop Es is regularly heard on 6 meters. Considering that channel two video is just 5mhz up the band from 6 meters and considering that the band will be clear almost everywhere, there's a chance we could all see TV from Mexico, the Caribbean and South America.

But if none of this materializes, we can all do yard work, paint the house or take out the garbage.



That's all for now. CU next month!



# TV News

Douglas E. Smith  
 1389 Old Clarksville Pike  
 Pleasant View, TN  
 37146-8098  
[w9wi@w9wi.com](mailto:w9wi@w9wi.com)  
<http://www.w9wi.com>

June 2009

## Abbreviations:

AF	Applied For (a new station)	NW	New station on the air
Aux	Auxiliary (backup) transmitter	PA	Proposed Amendment
CC	Callsign change	PC	Power (and/or tower height) change on the air
CL	City-of-license change	PG	Power change granted
DC	Converted to DTV	PR	Power change requested
DCC	Digital Companion Channel	RA	Returns to the air
NS DCC	Granted flash-cut to DTV	QC	Channel (frequency) change on the air
DE	License/permit deleted	QG	Channel change granted
DR	Requests flash-cut to DTV	QR	Channel change requested
FC	Programming (format) change	RE	Reinstated (previously-dismissed app.)
FTP	Failure to Prosecute	ROA	Request of Applicant
GA	Granted amendment (to table of channel allotments)	SI	Off the air (silent)
LC	License to Cover	STA	Special Temporary Authority
MX	Mutually Exclusive	XC	Transmitter site changed
NDA	Non-directional antenna	XG	Transmitter site change granted
NS	Permit granted for new station	XR	Transmitter site change requested

## News:

(full-power analog stations in **bold face**; LPTV and translators in regular type; full-power analog stations in ***bold italics***; low-power analog stations in *regular italics*)

\* indicates this DTV facility replaces an analog facility on the same channel.



### CANADA:

Alberta  
 Calgary

44 **CHCA-TV-1** *PR>17kw/378m, relocate XR*

### British Columbia

Fort Fraser

13 **CBCB-TV-2** CX, DE ROA. Had relayed CKPG-TV which dropped their CBC affiliation.



### PUERTO RICO:

Ponce

7 **WSTE-DT** *NS 100w/65m, 18-27-21/*

Ponce

31 **W31DL-D** DG from W36DB, 300w



### USA:

Alabama

Andalusia

40 **WAAO-LP** CC from W40BE

Demopolis	19	<b>WIIQ-DT</b>	<i>PR&gt;325m, 32-21-45/87-52-31 (suspect correction only); PG; PC</i>
Mobile	23	<b>WDPM-DT</b>	<i>NW 390kw/534m, 30-36-40/87-36-27 (Daystar)</i>
Montgomery	32	<b>WNCF-DT</b>	<i>*QC from ch. 51 35kw/545m, 32-08-30/86-44-04</i>
Tuskegee	22	<b>WBMM-DT</b>	<i>*QC from ch. 24, 65kw/341m</i>
Alaska			
Fairbanks	26	<b>KTVF-DT</b>	<i>PG&gt;27kw/471, 64-52-45/148-03-14</i>
Kasilof	48	<b>K48AC-D</b>	DR 1.3kw; DG
Wasilla	36	<b>K36JG-D</b>	DR 4.4kw
Arizona			
Globe	50	<b>KFPB-LD</b>	<i>PR&gt;4.85kw, 33-19-57/112-03-57</i>
Kingman	14	<b>K14NE-D</b>	DG from K25HU, 15kw, 35-39-07/114-18-41
Parker	49	<b>KJPO-LP</b>	<i>NW 9.9kw, 33-54-37/113-59-31 rescinded.</i>
Phoenix	8	<b>KAET-DT</b>	<b>PG&gt;40kw</b>
Phoenix	40	<b>KEJR-LD</b>	NW 15kw, DCC for ch. 43
Phoenix	42	<b>KVPA-LD</b>	DG 15kw
Prescott	45	<b>K45JX-D</b>	NW 350w, 34-11-32/112-45-13
Arkansas			
Harrison	21	<b>K23DU</b>	<i>QR from ch. 23 (via</i>

<b>Harrison</b>	31	<b>KWBM</b>	ch. 36)
<b>Little Rock</b>	44	<b>KARZ-DT</b>	<b>FC; sold to Daystar</b> <b>PG&lt;448m, 34-47-57/</b> <b>92-29-59</b>
<b>California</b>			
Crowley Lake	17	K17DF-D	DR 200w
Crowley Lake	19	K19DI-D	DR 100w
Esparto	4	K04QR-D	PR>240w, 38-42-29/ 121-28-33; CL from Lakeport
Fresno	32	KJEO-LD	DR 15kw; DG
Glen Arbor	6	KBKF-LP	OG from ch. 26, 600w, 37-04-36/ 122-08-18
Hesperia	6	KCIO-LP	PG<499w, 34-15-19/ 117-21-43; CL from Victorville
Lakeport	4	K04QR-D	PG>240w, 38-42-29/ 121-28-33
Long Valley	5	K05FR-D	DR 60w
Long Valley	49	K49EA-D	DR 100w
Monterey	27	KYMB-LD	DC 5kw
<b>Oxnard</b>	<b>24</b>	<b>KBEH-DT</b>	<b>PG&gt;1000kw/</b> <b>874m, 34-12-48/</b> <b>118-03-41; to move</b> <b>to Mt. Wilson</b>
<b>Palm Springs</b>	<b>42</b>	<b>KESQ-DT</b>	<b>PR&lt;42kw; PG</b>
Redding	10	KMCA-LD	DR 7w for ch. 2 LPTV
Redding	36	K36JS-D	AF replacement translator for KHSL- DT, 6.3kw, 40-39-16/ 122-31-23
Redding	40	K40HE-D	DR 15kw, 40-20-41/ 121-56-48
Sacramento	20	K27EU-D	DR from ch. 27, 4.7kw
Santa Clara	42	KAXT-LD	PR>15kw, 37-29-57/ 121-52-16 dismissed PC<499w, 34-15-19/ 117-21-43
Victorville	6	KCIO-LP	
<b>Colorado</b>			
Akron	8, 13	K08ND, K13XW	PG>2.5kw
Anton	24	K24IK-D	DG from K57IL, 436w (replaces permit for digital on ch 39)
Basalt	33, 36	K33HY-D, K36GX-D	DG 75w
Bayfield/Ignacio	42	K42DI-D	DC 280w
Broadmoor	41	K41JO-D	DR 1.5kw
Carbondale	29, 31	K29CK-D, K31CW-D	DG 640w
Carbondale	45	K45HL-D	DG 12w, 39-14-20/ 107-13-02
Crystal	40	K40IO-D	DG 640w
<b>Denver</b>	<b>7</b>	<b>KMGH-DT</b>	<b>*QC from ch. 17,</b> <b>27kw/359m, 39-43-51/</b> <b>105-13-54</b>
Durango & Hermosa	31	K31FV-D	DC 399w
Fort Collins	44	KDNF-LD	DG 15kw
Jacks Cabin	14, 18, 20	K65CR-D, K67CQ-D, K69BU-D	DR 480w, 38-42-47/ 106-48-34
Redstone	18	K18GD-D	DG 12w
Sargents	33, 47, 49	K33KE, K47LZ, K49KR	OG from K53AY, K57CS, K59DV 2.2kw, 38-29-49/ 106-19-12
Waunita Hot Springs	45	K45KT	OG from K55BI, 2.2kw, 38-29-49/ 106-19-12

Waunita Hot Springs	51	K51DI	PG>2.2kw, 38-29-49/ 106-19-12
<b>Delaware</b>			
Georgetown	48	W48DP-D	DG 5kw, 38-34-33/ 75-20-18
<b>District of Columbia</b>			
Washington	4	WIAV-LP	QR from ch. 58, 3kw
Washington	43	WIAV-LD	QR from ch. 44, 10kw
<b>Florida</b>			
Chiefland	32	W32DI-D	DG 15kw, 29-36-29/ 82-51-01; CL from Mayo
Gainesville	26	WGVT-LD	CC from WSSH-LP
Largo	14	WPDS-LD	DC 3.448kw
Orient City	15	W15CM-D	DR 5kw
Port St. Lucie	35	WSLF-LP	FC; sold to Daystar
St. Petersburg	36	W36CO	FC; sold by TBN
St. Petersburg	36	W36CO-D	XR 28-03-15/ 82-44-17; XG
Tampa	56	W56EB	FC to Enlace TBN?
Zephyrhills	45	WGCT-LD	XG 27-49-10/ 82-15-39
<b>Georgia</b>			
Atlanta	16	WYGA-LD	DR 4kw, 33-44-41/ 84-21-36; DG
<b>Atlanta</b>	<b>39</b>	<b>WSB-DT</b>	<b>PG&gt;316m</b>
<b>Atlanta</b>	<b>41</b>	<b>WATC-DT</b>	<b>PG&gt;750kw/</b> <b>317m</b>
Columbus	33	W33CN	NW 40kw, 32-31-52/ 85-01-37
<b>Idaho</b>			
McCall	41	K41HS-D	DC 84w
Pocatello	24	KXPI-LP	CC from KPPP-LP
<b>Illinois</b>			
Champaign	7	W07DD-D	PR<280w, 40-13-27/ 88-17-56; PG (modification from 300w at different site)
<b>La Salle</b>	<b>10</b>	<b>WWTO-DT</b>	<b>PG&gt;80kw</b>
<b>Indiana</b>			
Fort Wayne	38	W38EA-D	DC from W43CF, 15kw
Indianapolis	19	WDNI-LP	QC from ch. 65, 150kw, 39-48-01/ 86-04-39
<b>Indianapolis</b>	<b>20</b>	<b>WHMB-DT</b>	<b>QR from ch 16</b> <b>530kw/297m; QG</b>
<b>Indianapolis</b>	<b>45</b>	<b>WXIN-DT</b>	<b>PR&gt;300m, DA</b>
<b>Kokomo</b>	<b>29</b>	<b>WTTK-DT</b>	<b>PR&lt;550kw, non-DA</b>
<b>South Bend</b>	<b>46</b>	<b>WHME-DT</b>	<b>GA from ch 48</b> <b>933kw/305m, to relax</b> <b>protection</b> <b>requirements for</b> <b>WAQP-DT 48</b> <b>(Saginaw, Mich.) and</b> <b>WBME-DT 48</b> <b>(Racine, Wis.)</b>
<b>Iowa</b>			
<b>Des Moines</b>	<b>19</b>	<b>KDMI-DT</b>	<b>QR from ch 31</b> <b>839kw/610m from x-</b> <b>KCCI facility to x-</b> <b>WHO facility on</b> <b>same tower; QG</b>
Fort Madison	28	K28JD-D	DR 15kw
Mason City	33	K33KB-D	AF 8.3kw, 43-06-21/

			93-35-07, replacement translator for KAAL-DT
<b>Ottumwa</b>	<b>15</b>	<b>KYOU-DT</b>	<b>PG&lt;249kw, DA</b>
Ottumwa	18	K18GU-D	DR 15kw; DG
<b>Waterloo</b>	<b>7</b>	<b>KWWL-DT</b>	<b>*QC from ch. 55, 30kw/601m</b>
<b>Kansas</b>			
<b>Derby</b>	<b>31</b>	<b>KDCU-DT</b>	<b>GA from ch 46 1000kw/345m, 37-48-01/97-31-29</b>
Manhattan	36	K36IO-D	PG>1kw, 39-13-34/96-37-00
<b>Kentucky</b>			
<b>Bowling Green</b>	<b>13</b>	<b>WBKO-DT</b>	<b>QC from ch 33, 22kw/221m</b>
Louisville	50	W50CI-D	DG 15kw
<b>Louisiana</b>			
<b>Alexandria</b>	<b>35</b>	<b>KALB-DT</b>	<b>PG&gt;820kw/481m</b>
Lafayette	46	KLAF-LD	DR 100w; DG
<b>Lake Charles</b>	<b>20</b>	<b>KLTL-DT</b>	<b>PR 131.4kw/299m; PG</b>
Morgan City	22	KWBJ-CA	QG from ch. 39, 8.6kw (but already has license-to-cover for digital operation on this channel?!) DC from ch. 39, 15kw
Morgan City	22	KWBJ-LD	DC from ch. 39, 15kw
<b>Shreveport</b>	<b>24</b>	<b>KLTS-DT</b>	<b>PG&gt;350kw</b>
<b>Maine</b>			
<i>Bangor</i>	31	W31CX	PR>5.25kw, 44-30-39/68-45-15
<b>Presque Isle</b>	<b>8</b>	<b>WAGM-DT</b>	<b>PG&gt;6.9kw</b>
<b>Maryland</b>			
Salisbury	23	W23DF-D	DG 15kw, 38-32-34/75-56-56
<b>Massachusetts</b>			
<b>Boston</b>	<b>31</b>	<b>WFXT-DT</b>	<b>PC&gt;780kw/363m</b>
<b>Michigan</b>			
<b>Cadillac</b>	<b>32</b>	<b>WFQX-DT</b>	<b>QR from ch 47 175kw/422m, 44-08-12/85-20-33</b>
<i>Detroit</i>	23	WUDT-CA	FC; sold to Daystar
Escanaba	40	W40AN-D	DC 4.04kw
Holland	25	WOGC-CD	PG>2.6kw
Sault Ste. Marie	40	W67CS-D	DR from ch. 67, 465w
<b>Minnesota</b>			
<b>Alexandria</b>	<b>42</b>	<b>KSAX-DT</b>	<b>PG&lt;80kw</b>
Olivia	14,	K57AE-D,	DR 1kw
	18,	K53AO-D,	
	38	K55CK-D	
<b>Rochester</b>	<b>10</b>	<b>KTTC-DT</b>	<b>PG&gt;33.7kw</b>
St. Paul	16	K19ER-D	DR from ch. 19, 15kw
<b>Mississippi</b>			
Holly Springs	20	WBII-CD	DC 15kw
<i>Jackson</i>	6	WJMF-LP	QR from ch. 53, 2kw, 32-14-26/90-24-15
Meridan (sic)	21	W21CS-D	PR>1.2kw, 33-21-14/88-37-58

<i>Meridan</i>	42	W42DD	PR>2kw
<b>Missouri</b>			
<b>Joplin</b>	<b>43</b>	<b>KODE-DT</b>	<b>NW 1000kw/269m</b>
<b>Montana</b>			
<i>Billings</i>	45,	K45KS,	PC>1.1kw, 45-45-51/108-27-22
	51	K51KR	
Ferndale	24	K24ID-D	PR>108w; PG
Hysham	8	K08OW-D	DG from K11OS, 21w, 46-14-26/107-19-34
<b>Nebraska</b>			
Cambridge	30	K30FV-D	DR 2.1kw
Gothenburg	28	K28GC-D	DR 2.2kw
Newport	25	K25GM-D	DR 2.4kw
O'Neill	43	K43FX-D	DR 2.2kw
<b>Omaha</b>	<b>45</b>	<b>KMTV-DT</b>	<b>PR&lt;393m</b>
Omaha	48	KOHA-LP	FC; sold to Daystar
Wallace	33	K33FF-D	DR 1.56kw
<b>Nevada</b>			
<b>Ely</b>	<b>3</b>	<b>KVNV-DT</b>	<b>PR&gt;1.2kw</b>
Golconda	26	K26GG-D	DC 190w
Imlay	39	K39CX-D	DC 850w
Las Vegas	41	K41IO	FC to Enlace TBN?
Reno	46	KAZR-CD	DR 15kw
<i>Round Mountain</i>	25,	K25KR,	QG from K55HQ,
	27,	K27JZ,	K58FM, K61GL,
	29,	K29IS,	K31KIK63FP 300w
	31		
Winnemucca	21	K21FO-D	DC 200w
<b>New Jersey</b>			
East Orange	34	WPXO-LD	DC 3.5kw
Kinnelon	9	WWPS-LD	DR 300w, 40-56-52/74-28-19; CL from Hawley, Penna.; DG
<b>New Mexico</b>			
<i>Carlsbad</i>	50	K50IP	PR>1kw, 32-23-49/104-13-09
Farmington	43	K43AI-D	DG 3.17kw
Hobbs	28	K28JO-D	PR<500w, 32-23-49/104-13-09
Las Cruces	41	K41KY-D	NW 250w, 32-16-41/106-54-36, DCC for K57BV
Thoreau	31	K31JR-D	DG 390w
Tres Piedras	28	K28GV-D	DG 370w
<b>New York</b>			
Buffalo	15	WBNF-CD	DR 4.6kw
Greece	25	WGCE-DC	DG 4kw
<i>Hempstead</i>	32	W32DF	PG>3.3kw, 40-45-30/73-32-49
<b>Jamestown</b>	<b>26</b>	<b>WNYB-DT</b>	<b>PC&gt;234kw/463m</b>
Manhattan	17	WEBR-CD	DR 315w
Monticello	27	W27AL-D	PR<800w, 41-39-39/74-41-11; PG
New York	2	WKOB-LD	XR 40-45-22/73-59-12
<i>Nyack</i>	46	WRNN-LP	PR<1kw dismissed; going for 8.6kw on ch. 26 from different site
Port Jervis	50	W50DU-D	PG>6kw
<i>Port Jervis</i>	64	WASA-LP	FC; sold to KRCA-62 Los Angeles (Asian ethnic)
<b>Springville</b>	<b>67</b>	<b>WNGS</b>	<b>FC; sold to Daystar</b>

**North Carolina**  
**Kannapolis** 50 WAXN-DT PC>150kw/  
364m, DA; PC  
**Linville** 17 WUNE-DT PG>100kw  
Oxford 46 W46EK-D AF 600w, 36-27-39/  
78-45-19; replacement  
translator for WUNC-  
DT  
Raleigh 30 W30IF-D AF 750w, 35-40-34/  
78-32-10; replacement  
translator for WUNC-  
DT  
West Asheville 34 W14AS-D QR from ch. 14, 5kw

**Ohio**  
**Cincinnati** 33 WSTR-DT PR<360kw/  
337m, non-DA,  
amendment from  
1000kw/337m, DA  
**Cleveland** 26 WVIZ-DT PG<150kw  
Dayton 40 WRCX-LD DR 320w; DG  
Maplewood 32 W63AH-D DR 15kw, from ch. 63  
Marion 39 WOGB-CD DC 1kw, 40-36-46/  
83-07-48  
**Steubenville** 9 WTOV-DT \*QC from  
ch. 57; 23kw/282m  
**Toledo** 13 WTVG-DT PR>14.6kw; PG

**Oklahoma**  
Woodward 34 KOMI-LD QG from ch. 24, 15kw  
(had licensed facility at  
-8kw?!!); QC

**Oregon**  
**Bend** 28 K28JE PR>2kw, 44-04-43/  
121-33-07  
Bend 41 KBND-LD DR 230w; DG  
Eugene 53 KAMK-LP FC; sold to KBLN-30  
(relig.)  
Grants Pass 15 K15BP-D DG 849w  
Jacksonville 21 K21BG-D PG<614w  
Madras 46 K56BV-D DC from ch. 56, 1.2kw  
Medford 32 K32DY-CD DG 15kw (digital  
Class-A)  
Milton-Freewater 50 K50FX-D DR 1.2kw  
North Bend 7 K07JS-D DR 300w  
Powers 34, K34KL-D, DG from K61EH,  
38, K38LB-D, K64DA, K66DG,  
40, K40KI-D, K69AM, 100w, 42-54-  
42 K42IS-D 59/  
124-04-40  
**Roseburg** 36 KTVC FC; sold to KBLN-30  
(relig.)  
**Roseburg** 46 K53CU QR from ch. 53, 4w  
Salem 49 KWVT-LD DR from ch. 17, 15kw,  
45-31-21/  
122-44-45 (KGW-8  
tower, Portland)  
Warrenton 51 KHPN-LP XR 46-05-53/  
123-47-44

**Pennsylvania**  
Chambersburg 33 W33CR-D DG from W38AN, 5kw  
Erie 32 W32DH-D PR>2.07kw  
Philadelphia 2 WZPA-LD DR from ch. 33, 45w  
Pottsville 28 W61AG-D QR from ch. 18, 800w  
**Scranton** 41 WVIA-DT PG>365kw/  
510m  
Waymart 44 W44CT-D AF 323w, 41-37-55/  
75-25-33 replacement  
xltr for WVIA-DT

**Tennessee**  
**Cookeville** 22 WCTE-DT PG>200kw, DA  
**Knoxville** 7 WMAK-DT FC; sold to Daystar  
Nashville 31 WJDE-LD PR<5.3kw; PG  
**Tazewell** 48 WVLR-DT \*NW 1000kw/  
430m  
Union City 26 WUWT-CD DG 15kw; DC

**Texas**  
**Abilene** 38 K38JE NW 10kw, 32-25-04/  
99-58-16  
Austin 34 K34FM FC to Enlace TBN?  
**Beaumont** 12 KBMT-DT PR<18.2kw/  
305m, to match  
existing STA  
Beaumont 29 KQHO-LD DR from ch. 60, 15kw  
**Bryan** 28 KYLE-DT QR back to ch. 28,  
having given up on  
moving to 29.  
Corpus Christi 24 KCCX-LD DR 2kw  
**Dallas** 8 WFAA-DT PR>39.8kw/  
527m, 32-35-06/  
96-58-41;  
amendment from  
26.8kw; PG>45kw  
**Dallas** 35 KDFW-DT PC>1000kw  
**Fort Worth** 19 KTXA-DT PG<750kw  
Greenville 51 KHFD-LD PC>5kw  
Livingston 25 KCTL-LP PC>16kw  
Lubbock 44 K44HH FC to Enlace TBN?  
Lufkin 14 KIBN-LD DR 15kw; DG  
McAllen 20 KSFE-LD DR 15kw, 26-05-18/  
98-03-44  
Plainview 31 K31IK NW 10kw, 34-12-56/  
101-52-59  
**Port Arthur** 40 KBTB-DT PG<253m, non-DA,  
30-09-20/  
93-59-10  
San Angelo 13 KSAD-LP NW 3kw, 31-27-42/  
100-31-04  
San Angelo 23 K23IA NW 5kw, 31-28-19/  
100-24-47  
San Antonio 42 K42GJ XR 29-41-06/  
98-26-59 (and  
decrease power from  
10kw to 9.99...); XG  
**Tyler** 7 KLTV-DT PG>66kw  
Uvalde 47 K47IJ XC 29-37-11/  
99-02-56  
Victoria 39 K39HB-D DR 450w  
Wichita Falls 46 KYWF-LD DR from ch. 52, 1kw,  
33-54-42/  
98-29-32

**Utah**  
Fremont 15, K15GI-D, DG 10w; DC  
17 K17FQ-D  
Kanab 27, K27JV-D, NW 7w, 37-03-35/  
40 K40JM-D 112-31-12  
Ogden 10 KULX-CD PR>300w  
Ogden 68 K68GP-D DR 236w, 41-47-03/  
112-13-55  
Park City 35 K35OP-D DG 80w  
Rural Summit 17 K17DG-D DG 78w  
Co.  
Saint George 6 K06PE QG from K67HK, 350w  
St. George 46 KKRK-LD DG 300w

**Virginia**  
**Danville** 24 WDRL-DT NW 63kw/  
378m, 37-00-37/  
79-34-17  
Harrisonburg 42 W42DQ-D AF 1kw, 38-57-36/

			78-19-52; replacement translator for WHSV-DT
Staunton	51	W51EL-D	AF 500w, 38-09-54/79-18-51; replacement translator for WHSV-DT
<b>Washington</b>			
Centralia	29	K53AZ-D	PR>1.2kw, 46-33-18/123-03-25
Ellensburg	7	K54DX-D	DR from ch. 54, 300w
Everett	17	K58BW-D	DR from ch. 58, 500w, 48-02-01/122-08-02
Everett	43	K58BW-D	QR from ch. 58 dismissed, going for ch. 17 at reduced power & different site instead.
Grays River	41	K65BU-D	DR 500w
Olympia	23	KRUM-LD	DG 300w, 46-58-31/123-08-16; CL from Aberdeen
Seattle	46	KUSE-LD	PR>8kw
Spokane	17	K17OC-D	AF 1.2kw, 47-34-34/117-17-58 (replacement translator for KWSU-DT)
Walla Walla	31	K28FT-D	QR from ch. 28, 2.8kw, amendment from 5.4kw
Walla Walla	33	K33EJ	QR from no offset to zero
<b>West Virginia</b>			
Hampshire	34	W34DW-D	NW 12kw, 39-26-39/78-20-52, DCC for W41AO
Huntington	23	WSAZ-DT	PG<724kw/367m; NW
Morgantown	33	WNPB-DT	PG>615kw/464m
<b>Wisconsin</b>			
La Crosse	8	WKBT-DT	PC>25.7kw
Madison	36	W08CK-D	DR from ch. 8, 15kw
Wausau	7	WSAW-DT	PG>72kw
Wausau	9	WAOW-DT	PG>31.6kw
<b>Wyoming</b>			
Cheyenne	47	KGSC-LD	DG 4.58kw

Thanks to Dennis Smith for information appearing elsewhere in this column. (by the way, Dennis writes that both he and his home survived the wildfire disaster in Santa Barbara unscathed. They were, however, part of an enormous evacuation.)

The grant of a license-to-cover for KJPO-LP in Parker, Arizona has been rescinded. In a letter from the Media Bureau to KJPO licensee HCCN's president, Commission staff says they've received a complaint that KJPO is not operating from the site specified in their construction permit – and may not have been built at all.

HCCN has been given 15 days (from April 24th) to document construction and operation of the station with the authorized facilities, or explain why an application was filed for a license-to-cover for a facility that wasn't actually constructed. Failure to properly respond to the Commission inquiry may result in the cancellation of KJPO-LP.

HCCN is the permittee or licensee of numerous other LPTV stations around the country.

KDCU-DT's channel change in Kansas will allow the station to use KSCW-DT Wichita's existing transmitter. KSCW is moving to channel 19 from a different site.

There seem to have briefly been two K36JR's. The call briefly appeared on KHSL-DT's new replacement translator in Redding, California – and also on a translator in Fish Creek, Idaho. The California operation has since been reassigned K36JS.

W44CT-D Waymart, Pennsylvania will replace an existing analog translator on channel 52. Reportedly this translator was built to serve viewers whose direct reception of WVIA suffers from multipath from a large wind farm.

Channel 44 will become available on June 12<sup>th</sup>, when WVIA closes their analog operation on that channel. WVIA-DT is on channel 41.

A similar situation applies to K33KB Mason City, Iowa; its primary station, KAAL, is currently operating its digital facility on channel 33. They expect to move the main transmitter to channel 36 in June and use channel 33 for the translator.

Finally on the replacement translator front... The FCC has released permanent regulations for these stations. Again, "replacement" refers to replacement of the station's old analog coverage.

Replacement translators are to be authorized only to DTV stations that had an analog signal in the past. Their coverage must be confined to places where the analog signal reached. (with very minor exceptions) They receive priority processing, and don't have to wait for a LPTV filing window.

Replacement translator licenses are tied to the station's main transmitter license, and



will be renewed with that license. The release indicated these translators will not receive their own callsigns – they will be identified by their primary station.

(the handful or two of these that have already been authorized under Special Temporary Authority have received regular translator callsigns, like the W44CT-D mentioned above. However, they also share a “facility ID” with the primary station, and in many places on the FCC website they appear with the same callsign as the primary station. For the same reason, they will also appear with the primary station's callsign on my website.)

As you may remember, around the beginning of the year an "Analog Nightlight" program was created by Congress. This would have allowed many analog stations to remain on the air between February 17<sup>th</sup> and mid-March broadcasting information about the DTV transition and about local emergencies.

The FCC has ruled the *DTV Delay Act* also moved back the applicability of the *Analog Nightlight Act*. Selected stations may now continue to provide analog service between June 12<sup>th</sup> and July 13<sup>th</sup>. Again, only emergency and DTV transition information may be broadcast. (many of you saw a NAB DVD looping on many stations for two weeks after February 17<sup>th</sup>. You might expect the same DVD to air on stations providing June nightlight service.)

The following list of stations have expressed interest in participating in post-June 12<sup>th</sup> "nightlight" operation:

<u>Market</u>	<u>Stations</u>
Albuquerque:	<b>KOB-4</b> , KWQB-19, KASY-50
Anchorage:	<b>KTUU-2</b>
Boston:	<b>WGBH-2, WBZ-4, WCVB-5</b>
Champaign:	WSEC-14
Charlotte:	WJZY-46
Chattanooga:	<b>WRCB-3</b>
Chicago:	WCIU-26
Cincinnati:	<b>WLWT-5</b>
Cleveland:	<b>WKYC-3</b>
Dallas:	<b>KDFW-4, KXAS-5</b>
Denver:	<b>KCNC-4, KRMA-6</b>
Detroit:	<b>WJBK-2, WDIV-4</b>
Eugene:	<b>KPIC-4</b>
Gainesville:	<b>WUFT-5</b>
Greensboro:	<b>WFMY-2, WXII-12</b>
Greenville:	<b>WYFF-4, WUNF-33</b>
Harlingen:	<b>KRGV-5, KTLM-40</b>
Kansas City:	KMBC-9
Knoxville:	<b>WATE-6</b>
Las Vegas:	<b>KVBC-3, KBLR-39</b>
Los Angeles:	<b>KCBS-2, KNBC-4, KWHY-22</b>
Louisville:	WBNA-21, WLKY-32
Miami:	<b>WPBT-2, WTVJ-6</b>

Milwaukee:	WBME-49
Minneapolis:	<b>WCCO-4, KSTP-5</b>
New Orleans:	<b>WDSU-6</b>
New York:	<b>WCBS-2, WNBC-4, WNYE-25</b>
Norfolk:	<b>WUND-2</b>
Odessa:	<b>KOCT-6</b>
Okla. City:	<b>KOCO-5</b>
Omaha:	KETV-7
Orlando:	<b>WKMG-6, WKCF-18, WOFL-35</b>
Paducah:	<b>WSIL-3</b>
Philadelphia:	<b>KYW-3</b>
Phoenix:	<b>KTVK-3</b>
Pittsburgh:	<b>KDKA-2, WTAE-4</b>
Portland:	KCKA-15
Puerto Rico:	<b>WORA-5, WSJU-30</b>
Raleigh:	<b>WRAL-5</b>
Reno:	<b>KTVN-2</b>
Rochester NY:	WXXI-21
Sacramento:	<b>KCRA-3, KVIE-6</b>
San Diego:	KNSD-39
San Francisco:	KNTV-11, KTSF-26
Seattle:	<b>KING-5, KBTC-28</b>
Sherman:	KTEN-10
Shreveport:	<b>KTBS-3</b>
Tampa:	WMOR-32
Tucson:	KMSB-11, KUAS-27
Virgin Is.:	WTJX-12
Washington:	<b>WRC-4, WTTG-5</b>
West Palm Beach:	WPBF-25

An additional 746 stations have been determined eligible by FCC staff but have not expressed interest in participating. (the Commission is strongly urging them to reconsider)

Good (DTV?) DX!

## ATTENTION FM DXERS!

Thanks to high demand by the FM Dxing community, Ed Hanlon, owner of [AntennaPerformance.com](http://AntennaPerformance.com) and designer of the APS-13 FM antenna, has agreed to a limited run of the discontinued APS-13 for a *limited time only*. If you'd like to order an APS-13 it's imperative that you email Ed at [info@antennaperformance.com](mailto:info@antennaperformance.com) and place your order. Only serious buyers need apply.

The APS-13 retails for about \$200 and you'll pay that plus shipping. You'll get that price when you email Ed.

This is a limited time offer and may never happen again.

[info@antennaperformance.com](mailto:info@antennaperformance.com)





# FM NEWS

From WTFDA.info and w9wi.com



BILL HALE, 6124 ROARING SPRINGS DR, N. RICHLAND HILLS TX 76180

FMnews@wtfda.org

JUNE 2009

## INDEX OF ABBREVIATIONS

APP	application	PTA	Program Test Authority (station hasbeen given authority to begin testing)
APP Mod	change to an already submitted application	STA	Special Temporary Authority
AUX	auxiliary facilities (backup)	RoA	(at the) request of applicant
CL	city of license (change to or from)	XL	Transmitter Location
Class	FM license class	AS	American Samoa
CP	construction permit (authority to broadcast with facilities noted)	GU	Guam
CP Mod	change to an already granted CP	NMI	Northern Mariana Islands
DA	directional antenna	VI	Virgin Islands
FC	frequency change (to or from)		
LC	License to Cover (station has ended testing and has been given authority to begin operation)		
NDA	non-directional antenna		

Note: antenna heights are HAAT except where noted

## --- CANADA --- - CALL LETTER CHANGES -

		<u>Old Call</u>	<u>New Call</u>
AB	Calgary	103.1 CIQX	CFXL
AB	High River	100.9 CFXL	CKUV
BC	Lake Cowichan	98.7 NEW	CICV
NB	Rothsay	95.1 CJEF-1	CJRP-1
NB	Saint John	103.5 CJEF	CJRP

## - FORMAT and SLOGAN CHANGES -

AB	Drumheller	99.5 CHOO	> Hot AC: <i>Drum FM</i>
ON	Alliston	94.7 CFAO	> AC: <i>FM 94 point 7</i>
ON	Pickle Lake	96.5 CJTL	> Christian Aboriginal: <i>Wah Ste Win Radio</i>
ON	Thunder Bay	98.1 CJTL-1	> Christian Aboriginal // CJTL: <i>Wah Ste Win Radio</i>
QC	Gatineau	104.7 CJRC	> French Classic Hits
QC	Levis	102.9 CFOM	> French Classic Hits
QC	Montreal	92.5 CFQR	> <i>The New Q</i>

## --TECHNICAL CHANGES --

AB	Weberville-Peace River	101.7 CIAM-5	Relocate transmitter + decrease in antenna height
BC	Vanderhoof	98.5 CIAM-FM-11	FC from 97.9
BC	Big White Ski Resort	98.1 CHSU-1	Increase antenna height
QC	Joliette	103.5 CJLM-FM	4.5 kw
QC	Longueuil	103.3 CHAA-FM	1.4 kw
QC	Pikogan	100.1 CKAG	3.738 kw; relocate transmitter + increase antenna height
QC	Sherbrooke	104.5 CKOY-FM	50 kw/190 m, DA, 45-22-25/71-54-54; relocate transmitter

## --TECHNICAL CHANGES -- - GRANTS FOR NEW STATIONS -

<u>CP granted for:</u>			
AB	High Prairie	93.5 CKVH(FM)	25 kw; move from 1020 kHz; will remain Classic Hits
AB	Saint Paul	97.7 CHLW(FM)	36 kw; move from 1310 kHz; will remain Country
BC	Cawston	106.9 NEW	20 w
BC	Lake Cowichan	98.7 NEW	5 w; Community (Cowichan Valley Community Radio Society)
BC	Merritt	101.1 CJNL(FM)	200 w; will remain AC/Oldies; 1230 will become a relay of CHNL-610 Kamloops
MB	Winnipeg	106.1 CFJL-FM	40 kw/175 m, 49-45-20/97-07-53; had prior approval, but had to find a new frequency; will be AC (35%) and New Easy Listening (65%)
NS	Amherst	101.7 CKDH(FM)	40 kw-V/32 m, 45-50-44/64-12-45; will remain AC; FC from 900 kHz
NS	Bridgewater	100.7 NEW	10 kw; Country

## --TECHNICAL CHANGES --

### - APPLICATIONS FROM EXISTING/PROPOSED FACILITIES -

<u>Applies for:</u>			
AB	Calgary	90.3 CFUL	100 kw; relocate transmitter at increased antenna height
AB	Calgary	90.3 CFXL	Relocate transmitter at increased antenna height
AB	Drayton Valley	92.9 CIBW	50 kw
BC	Abbotsford	88.5 CIVL-FM	1 kw/-17 m + relocate XR
ON	Hamilton	94.7 CIWV	100 kw

ON	Sudbury	103.9	CHNO-FM	CP Mod: 100 kw/150 m
ON	Thunder Bay	99.9	CJUK	250 w
ON	Wingham	101.7	CKNX	100 kw + decrease antenna height
ON	Wingham	94.5	CIBU	75 kw + decrease antenna height
YT	Whitehorse	94.5	CFWH(FM)	6.29 kw/421 m moving from 570 kHz; the applicant intends to operate the existing transmitters of CBDB Watson Lake, CBDC Mayo, CBDD Elsa, CBDK Teslin, CBDM Beaver Creek, CBDX Swift River, CBQF Carmacks, CBQJ Ross River, CBUA-FM Atlin, CBQK-FM Faro, CBDL-FM Destruction Bay, CBDF-FM Haines Junction and CBDN Dawson City as rebroadcasting stations of the proposed FM station.

**--TECHNICAL CHANGES --  
- PROPOSALS FOR NEW STATIONS -**

NB	Caraquet	93.9	NEW	<u>Applies for:</u> 50 w/53 m, to relay CBAF-FM Moncton, temporary for July, August, and September for the Acadian Festival of Caraquet and the 4th Worldwide Acadian Convention
----	----------	------	-----	---

**--- UNITED STATES AND TERRITORIES ---  
FULL POWER and LPFM STATIONS**

**- CALL LETTER CHANGES -**

	<u>Old Call</u>	<u>New Call</u>							
AL	Monroeville	88.9	NEW	WILF	NM	Hurley	88.1	NEW	KOOT
AK	Fairbanks	90.7	NEW	KWMB	NY	Copiague	89.3	NEW	WGSS
AK	Glennallen	88.7	NEW	KVRM	NY	Lindenhurst	89.7	WRMR	WOBH
AR	Marshall	90.3	NEW	KCAV	NY	Mexico	103.9	WVOA-FM	WVOU
AS	Mapusaga	90.5	NEW	KPPU	NY	Mount Hope	90.1	WXHD	WMFU
CA	Morro Bay	99.7	KXTY	KESC	ND	Cannon Ball	107.5	NEW	KXRV
CA	Pala	91.3	KUUP	KOPA	OH	Cincinnati	95.7	NEW	WFHZ-LP
CO	Calhan	104.7	NEW	KKHN	OR	Condon	93.5	KHAL	KWCQ
CT	Waterbury	104.1	WURH	WMRQ	OR	Gleneden Beach	88.1	KQAC	KQOC
FL	Islamorada	89.3	WRTH	WAZQ	OR	Portland	89.9	KBPS-FM	KQAC
FL	Key West	88.3	WAZQ	WZGZ	PA	Boyertown	107.5	WFKB	WBYN-FM
FL	Layton	88.7	WNGY	WAZQ [then]	PA	Laporte	90.9	NEW	WCIJ
FL	Layton	88.7	WAZQ	WRTH	TN	Oliver Springs	106.1	WJZO	WJRV
FL	Marianna	91.1	NEW	WHMF	TN	Ooltewah	95.3	WHJK	WPLZ
GA	Cusseta	91.1	NEW	WJEP	TX	Canadian	91.1	NEW	KHHC
HI	Hilo	92.7	KHWI	KIPA	TX	Childress	89.5	NEW	KFCH
HI	Holualoa	92.1	KIPA	KHWI	TX	Falfurrias	88.1	NEW	KTPM
IL	Macomb	89.7	NEW	WLWM	TX	Lake Jackson	107.5	KHTC	KGLK
KS	Pleasanton	93.7	KPIO	KPIO-FM	TX	Tyler	92.1	KDOK	KTBB-FM
KY	Oak Grove	94.3	WEGI	WEGI-FM	TX	White Oak	99.3	KAJK	KZTK
ME	Boothbay Harbor	96.7	WCME	WTQX	TX	Yorktown	96.3	NEW	KGGB
ME	Lincoln	89.5	NEW	WMWR	UT	Santa Clara	91.3	NEW	KXDS
ME	Machias	101.1	NEW	WLEK	VA	Norfolk	100.5	WXMM	WVHT
MS	Centreville	104.9	WAKK-FM	WKJN	WA	Elma	91.3	NEW	KZFL
MT	Big Timber	89.3	NEW	KYPB	WA	Goldendale	90.5	NEW	KNWG
NV	Elko	89.3	NEW	KLKR	WA	Oakville	97.7	KFMY	KOMO-FM
NH	Conway	91.1	NEW	WPHH	WA	Olympia	97.7	KFMY-FM1	KOMO-FM1
NJ	Lindenhurst	89.7	WRMR	WOBH	WA	Port Townsend	91.1	NEW	KROH
NM	Belen	91.1	KQRI	KQGC	WA	Sedro-Wooley	88.9	NEW	KPYU

**- FORMAT AND SLOGAN CHANGES -**

(Including LPFMs)					
AL	Brookwood	105.9	WRTR	>	Talk // WACT-1420
AL	Daphne	106.5	WAVH	>	Talk: <i>FM Talk 106 point 5</i>
AK	Homer	89.9	KHGO	>	Contemporary Christian
AZ	Wellton	95.9	KUKY	>	Tejano: <i>Amigo 95 point 9</i>
AR	Marshall	90.3	KCAV	>	Religion // KCMH-91.5
AR	Paris	95.3	KERX	>	Adult Hits
CA	Morro Bay	99.7	KXTY	>	Classical // KUSC-91.5
CA	Ridgecrest	104.9	KLOA-FM	>	Regional Mexican: <i>Ke Padre</i>
CA	San Joaquin	105.5	KJZN	>	Talk: <i>The Truth</i>
CT	Waterbury	104.1	WMRQ	>	<i>Radio 104 point 1</i>
FL	Hialeah	92.3	WCMQ-FM	>	Spanish Classic Hits
FL	High Springs	104.9	WYGC	>	Fox Sports: <i>The Game</i>
FL	Key Colony Beach	101.7	WKYZ	>	Talk // WFFG-1300
KS	Pleasanton	93.7	KPIO-FM	>	Religious Teaching (Catholic)
HI	Kihei	107.5	KHEI-FM	>	Ethnic
IA	Belle Plaine	95.5	KZAT	>	Returns to the air with Classic Hits
IA	Charles City	95.9	KCHA-FM	>	<i>The Best Mix of the '60s through Today [0400-1900]; Today's Best Music [1900-0400]</i>
MI	Chocolay Township	94.9	WUPZ	>	Contemporary Hits: <i>The Bay</i>
MI	Grand Haven	92.1	WGHN-FM	>	Adult Contemporary
NE	Bridgeport	101.3	KOZY-FM	>	Hot AC: <i>KOZY 101 point 3 FM</i>
NE	Grand Island	91.5	KBTK	>	Christian CHR/Rock: <i>Freedom Radio FM</i>
NV	Smith	92.3	KSVL	>	Oldies/Talk
NJ	Paterson	93.1	WPAT-FM	>	Spanish Hits
NM	Bosque Farms	104.7	KABQ-FM	>	Classic Country
NM	Corrales	95.1	KSYU	>	Rhythmic AC: <i>Move to the Music</i>
NM	Hurley	88.1	KOOT	>	Variety

NY	DeRuyter	105.1	WVOA-FM	> Religious Teaching // WVOU-103.9; Love Radio
NY	Catskill	98.5	WCTW	> Hot AC: 98 point 5 The Cat
NY	Ridge	94.7	WLIX-LP	> Christian CHR/Rock
NY	Webster	102.7	WLGZ-FM	> Classic Hits
NC	Hatteras	97.1	WYND	> Sports // WZPR-92.3
NC	Nags Head	92.3	WZPR	> Classic Hits // WFMZ-104.9
OH	Greenville	106.5	WDSJ	> Country: Bull
OH	Waynesville	89.3	WYNS	> Variety; Hybrid FM
OK	Vinita	96.1	KITO-FM	> Country: Country 96
RI	Providence	96.5	WIGV-LP	> Spanish Religious
SC	North Charleston	102.5	WXLV	> Adult Contemporary: Y 102 point 5
TN	Bartlett	92.9	WMFS	> ESPN Sports // WSMB-680
TN	Cleveland	95.3	WPLZ	> News/talk: Pulse News
TN	Kingsport	104.9	WKOS	> Hot AC: 104 point 9 KOS
TX	Haltom City	93.3	KDBN	> Rock: Quality Rock 93 point 3
TX	Hudson	96.3	KZXL	> Rock: 96 point 3 - Everything That Rocks
TX	Laporte	103.7	KHJK	> AAA: FM 103 point 7 KHJK
TX	Odem	98.3	KLHB	> Spanish Adult Hits
TX	Tyler	92.1	KTBB-FM	> Talk [separate programming from KTBB-600]
TX	White Oak	99.3	KZTK	> Talk: 99 point 3 Talk FM
TX	Yorktown	96.3	KGGB	> Regional Mexican: La Ley
VA	Norfolk	100.5	WVHT	> Top 40: Hot 100 point 5
WA	Oakville	97.7	KOMO-FM	> News-Talk // KOMO-1000
WA	Prosser	101.7	KLES	> Regional Mexican: La Vaquera 101 point 7
WA	Vancouver	105.9	KQOL	> Classic Rock: 105 point nine, The Brew
WI	Adams	106.1	WDKM	> Adult Contemporary/Classic Hits
WI	Platteville	107.1	WPVL-FM	> Top 40: 107 point 1 The Edge
WY	Wamsutter	97.7	KHNA	> Oldies: Kool 97 point 7

## -TECHNICAL CHANGES -

### - NOW ON THE AIR -

AL	Fort Rucker	103.9	WJRL-FM	25 kw/89 m, 31-26-25/85-33-49
AL	Millbrook	97.1	WWMG	5.4 kw/214 m, 32-20-06/86-17-16
AL	Shorter	107.9	WMRK-FM	25 kw/100 m, 32-21-09/86-03-06; CL from Orrville
AK	Galena	97.1	KIYU-FM	100 w/15 m, 64-44-34/156-50-30; Class D
AZ	Bullhead City	89.9	KVIR	8 kw-V/709 m, DA, 35-15-08/114-44-58
AR	Camden	89.5	KCAC	10 kw/99 m, DA, 33-39-16/92-40-34
AR	Marshall	90.3	KCAV	57 w/206 m, 35-52-16/92-39-10; Class A
CA	Los Angeles	100.3	KSWD	5.4 kw/889 m, 34-13-37/118-03-58
CO	Center	103.5	KPAU	460 w/8 m, 37-47-20/106-06-43
CT	New Britain	100.5	WRCH	7.5 kw/381 m, 41-42-13/72-49-57
FL	Palm Beach Gardens	99.5	WAFB-FM	6 kw/100 m, 26-45-42/80-04-42; CL from Clewiston
FL	Panama City	90.7	WKGC-FM	100 kw/109 m, 30-17-45/85-39-42
GA	Augusta	90.7	WACG-FM	25 kw/137 m, 33-24-15/81-50-19
GA	Coosa	93.5	WSRM	1.2 kw/226 m, DA, 34-14-02/85-13-50
HI	Makawao	94.3	KDLX	760 w-H/933 m, 20-46-31/156-14-49
ID	Aberdeen	99.5	KQPI	2.2 kw/597 m, 42-48-31/112-29-10; Class C2
IL	Canton	107.9	WCDD	25 kw/82 m, 40-32-41/90-01-16
IL	Chatham	100.5	WYMG	50 kw-H/45 kw-V/149 m, DA, 39-39-43/89-55-22
KS	Hays	89.7	KHYS	250 w/89 m, 38-51-16/99-22-55
KS	Oberlin	91.3	KRLE	250 w/36 m, 39-47-14/100-31-54
KS	Pleasanton	93.7	KPIO-FM	25 kw/100 m, 38-14-23/94-56-36; Class C3
KS	Winfield	107.9	KWLS	50 kw/150 m, 37-15-46/96-53-42
KY	Williamstown	106.7	WNKR	1.8 kw/185 m, 38-41-19/84-35-07; FC from 106.5
LA	Monroe	90.3	KEDM	100 kw/261 m, 32-39-38/91-59-28
LA	New Orleans	89.1	WBSN-FM	11 kw/134 m, 29-55-11/90-01-29
LA	Shreveport	89.9	KDAQ	100 kw/284 m, XL to 32-40-40/93-55-30
ME	Machias	101.1	WLEK	500 w/58 m, 44-44-08/67-30-11; Class A
MI	Carrollton	100.5	WSGW-FM	3 kw/100 m, 43-33-43/83-58-54
MN	Barnesville	95.1	KBVB	100 kw/117 m, 46-49-09/96-45-56
MO	Cabool	88.1	KZGM	12.5 kw/135 m, DA, 37-07-15/92-00-09
MT	Anaconda	97.7	KGLM	2.75 kw/300 m, 46-06-04/112-56-59
MT	Billings	101.1	KFHW-LP	10 w/34 m, 45-46-16/108-29-07; FC from 92.5
MT	Missoula	102.5	KMSO	40 kw/533 m, 46-48-30/113-58-38
NE	Grand Island	91.5	KBTK	1.5 kw/30 m, 40-54-35/98-23-00
NV	Overton	106.9	KONV	100 kw-H/276 m, DA, 36-57-59/114-33-21; Class C1
NJ	Toms River	90.3	WNJO	1 w-H//4 kw-V/37 m, 39-54-52/74-04-58
NM	Espanola	92.9	KYBR	15.5 kw/127 m, DA, 36-05-52/106-07-18
NM	Hurley	88.1	KOOT	2 kw-V/51 m, 32-49-29/108-14-54; Class A
NY	New York	91.5	WNYE	2 kw/281 m, 40-45-22/73-59-12
NY	Remsen	93.5	WOKR	3 kw/144 m, 43-19-31/75-10-29
NC	Hickory	89.1	WRYN	850 w/90 m, DA, 35-41-23/81-25-16; Class A
OH	Harrison	104.3	WNLT	5.6 kw/96 m, 39-13-34/84-42-59
OH	Dublin	106.7	WRXS	7.3 kw/180 m, 40-09-33/82-55-23; FC from 106.9; CL from Marion
OH	Georgetown	103.1	WRAC	6 kw/100 m, 38-52-14/83-45-55; CL from West Union
OH	Norwood	100.3	WMOJ-FM	3.1 kw/141 m, 39-07-19/84-32-52
OH	South Webster	94.9	WEKV	2.2 kw/140 m, 38-42-30/82-40-15
OH	Waynesville	89.3	WYNS	100 w/15 m, 39-29-14/84-04-29; Class A
OH	Westerville	107.9	WVMX	3 kw/143 m, 40-14-42/82-55-49
OK	Bennington	96.1	KZRC	6 kw/100 m, 33-53-51/96-08-18; Class A
OK	The Village	98.1	WWLS-FM	31 kw/470 m, 35-33-37/97-29-07
OR	Portland	101.9	KINK	100 kw/902 m, 45-30-58/122-43-59

PA	Markleysburg	89.1	WLOG	3.6 kw/69 m, DA, 39-37-31/79-33-43
PA	Sykesville	95.9	WZDB	1.5 kw/196 m, DA, 41-02-44/78-42-12; Class A
SC	Beaufort	88.7	WAGP	100 kw/103 m, DA, 32-21-27/80-55-11
TX	Dalhart	91.7	KTDA	830 w/39 m, 36-03-20/102-30-34
TX	Friona	94.7	KGRW	48 kw/153 m, 34-41-17/102-56-53
TX	Hereford	88.7	KRBB	10 kw/114 m, 34-53-50/102-14-08; Class C3
TX	Houston	94.5	KTBZ-FM	100 kw/585 m, 29-34-34/95-30-36
TX	Houston	99.1	KODA	100 kw/585 m, 29-34-34/95-30-36
TX	San Benito	106.3	KHKZ	6.2 kw/200 m, DA, 26-08-28/97-50-04
TX	Yorktown	96.3	KGGB	6 kw/100 m, 29-02-43/97-24-23; Class A
VA	Petersburg	100.3	WARV-FM	4.5 kw/116 m, 37-10-55/77-24-01
WA	Covington	104.5	KMCQ	25 kw/97 m, 47-11-13/121-54-11
WA	Goldendale	90.5	KNWG-FM	300 w/508 m, DA, 45-42-25/121-05-28
WA	Richland	102.7	KORD-FM	100 kw/404 m, 46-05-58/119-07-40; Class C0 from C
WA	Selah	103.1	KYKV	5.4 kw/435 m, 46-38-27/120-23-46
WV	Fayetteville	100.7	WVBD	480 w/343 m, DA, 37-55-40/80-58-12; Class A
WV	Hurricane	91.5	WPJW	3 kw/92 m, DA, 38-26-41/82-00-54
WI	Highland	91.3	WHHI	100 kw/170 m, 43-02-56/90-22-08
WY	Casper	89.1	KLWC	2.7 kw-V/564 m, 42-44-03/106-20-00; Class C1
WY	Bar Nunn	92.5	KDAD	5.3 kw/437 m, 42-45-30/106-19-23; CL from Douglas; Class C2 from C1
WY	Glendo	100.1	KYOD	100 kw/139 m, 42-46-13/105-13-21
WY	Wamsutter	97.7	KHNA	120 w/16 m, 41-39-56/107-58-11; Class A

**- TECHNICAL CHANGES -**

**- FCC ACTIONS -**

**CP GRANTED FOR:**

AL	Five Points	88.5	WJBE	3.9 kw-V/61 m, DA, 33-57-54/87-12-57
AL	Jemison	89.3	WZLM	CP Mod: 2.5 kw-V (drops H), 57 m, DA, 33-00-25/86-44-03; Class A
AK	Juneau	88.9	KNGW	CP Mod: 10 kw-V/370 m, 58-18-05/134-26-26
AK	Ruby	98.1	KRBY	CP Mod: 100 w/-21 m, 64-44-20/155-28-48; Class D
AZ	Parker	97.3	KPKR	1.7 kw/283 m, 34-07-29/114-12-38
AZ	Wellton	95.9	KUKY	CP Mod: 390 w/385 m, 32-40-22/114-20-11; Class A
AR	Turrell	94.7	KKLV	5.7 kw/77 m, XL to 35-38-15/90-53-33; CL to Weiner
AR	Walnut Ridge	101.7	KRLW-FM	10.5 kw/327 m, DA, 35-57-14/90-41-41; Class C2 from A
CO	Burlington	99.3	KPCR	CP Mod: 8 kw-H/79 m, 38-03-18/103-53-35
CO	Phippsburg	94.1	KEZZ	CP Mod: 1.75 kw/380 m, 40-22-03/106-41-28; Class C2
CO	Stratton	96.7	KGGY	CP Mod: 6.5 kw/70 m, 39-20-59/102-35-34; Class C3
FL	Cross City	88.5	WWLC	100 kw/101m, (to) DA, XL to 29-31-36/83-14-17; Class C1 from A
FL	Cutler Bay	90.9	WGES-FM	CP Mod: 100 kw-V/72 m, DA, XL to 25-19-31/80-24-16; CL from Key Largo; Class C1 from C2
FL	Fruit Cove	94.1	WSOS-FM	CP Mod: 5.5 kw/154 m, XL to 30-04-08/81-38-50
FL	Islamorada	89.3	WAZQ	CP Mod: 10 w-H//100 kw-V/35 m, DA, 24-50-22/80-47-29; Class C1
FL	Layton	88.7	WRTH	1.25 kw-V/77 m, 24-45-35/80-57-22; Class A
FL	Marco	98.9	WGUF	6 kw/100 m, XL to 26-03-10/81-42-11
FL	Pennsuko	88.3	WGNK	4 kw/104 m, DA, XL to 25-52-58/80-25-53
GA	Fort Gaines	90.9	WJWV	20.7 kw-H//81 kw/78 m, DA, 31-36-16/85-02-02
GA	Toccoa Falls	90.9	WRAF	100 kw (increases V to match H)/172 m, DA, 34-35-57/83-21-55
IL	Rockton	103.1	WGFB	2.4 kw/160m, 42-22-02/89-05-13
IN	Terre Haute	91.9	WHOJ	1.5 kw/14 m, 39-28-05/87-23-59
IN	Warsaw	98.3	WIOE-LP	100 w-H (drops V)/13 m, XL to 41-14-17/85-50-52
IA	Postville	89.1	KPVL	3 kw/75 m, (to) DA, 43-05-20/91-33-54
KY	Midway	107.9	WBTF	6 kw/86 m, XL to 38-08-48/84-41-06
LA	Franklinton	98.9	WUUU-FM	25 kw/67 m, 30-44-11/90-12-05; Class C3 from A
MA	Waltham	102.5	WKLB-FM	14 kw/276 m, 42-18-37/71-14-14
MS	Collins	107.1	WLVS	2.25 kw/165 m, 31-31-49/89-30-29
MO	Sunrise Beach	90.3	KCRL	9.5 kw-V/87 m, (to) DA, 38-18-07/92-48-58
MT	Bozeman	99.9	KBOZ-FM	3.3 kw/274 m, 34-44-30/120-26-45
MT	Great Falls	88.9	KGFC	6 kw/74 m, XL 47-27-52/111-21-18
NE	Lincoln	88.5	KLCV	CP Mod: 46 kw (adds H)/383 m, DA, 40-47-10/96-23-10; Class C1 from A
NV	Fernley	107.3	NEW	CP Mod: 100 kw-H/600 m, (drops DA), 39-54-46/118-55-18; CL from Alturas, California; Class C
ME	Norway	92.7	WOXO-FM	5.2 kw/224 m, XL to 44-17-47/70-37-05; Class C3 from A
NJ	Asbury Park	88.1	WYGG	CP Mod: 1 w-H/920 w-V/34 m, (to) DA, XL to 40-13-02/74-00-38
NH	Laconia	91.5	WANH	CP Mod: 1.7 kw/8 m, DA, 43-41-25/71-22-34
NM	Las Vegas	100.7	KLVF	50 kw/-33 m, 35-35-48/105-12-20; Class C2 from C3
NY	Hancock	107.1	WJZI	CP Mod: 2.1 kw/34 m, 41-57-43/75-16-17; Class A
NY	Herkimer	92.7	WXUR	6.4 kw/201 m, XL to 43-08-38/74-10-43; Class B1 from A
NC	Greensboro	103.1	WUAG	99 w/81 m, 36-03-51/79-48-37
NC	Roanoke Rapids	95.9	WEZU-LP	88 w/32 m, 36-28-08/77-39-02
NC	Sanford	90.5	WDCC	2 kw/72 m, XL to 35-28-23/79-08-22
ND	Jamestown	89.1	KLUU	1.7 kw-V/87 m, 46-50-05/98-41-31; FC from 88.9
OH	Lexington	89.5	WFOT	415 w-V/89 m, 40-43-36/82-36-59
OH	Munroe Falls	98.1	WKDD	50 kw/138 m, 41-12-00/81-31-23
OR	Eugene	91.9	KRVM-FM	15 kw-H//6.4 kw-V/276 m, XL to 44-00-07/123-06-47; Class C2 from A
PA	Dallas	107.7	WGMF	1.25 kw/221 m, (drops DA), XL to 41-27-07/76-00-33; CL from Tunkhannock
PA	Honesdale	90.9	WZZH	1.9 kw/278 m, (to) DA, 41-35-35/75-25-56; Class B1 from A
TN	Ooltewah	95.3	WPLZ	CP Mod: 3.4 kw/275 m, XL to 35-07-45/85-20-02; CL from Cleveland; Class C3 from A
TX	Big Sandy	90.7	KTAA	13.5 kw (adds H)/157 m, (to) DA, XL to 32-37-49/94-53-43; Class C2 from C3
TX	Cedar Lake	89.9	NEW	CP Mod: 50 kw/55 m, DA, 28-46-23/95-36-52; Class C2
TX	Markham	92.5	KKHA	25 kw/100 m, (to) DA, XL to 28-49-55/96-00-40; Class C3 from A

TX	San Marcos	89.9	KTSW	26 kw/58 m, DA, XL to 29-43-24/98-05-11; Class C3 to C2
TX	Snyder	91.1	KGWB	55 kw/96 m, XL to 32-45-34/100-54-46; Class C1 from A
UT	Beaver	90.7	KEZB	CP Mod: 300 w/-2 m, 38-15-54/112-37-13; Class A
VA	Culpeper	103.1	WJMA-FM	6 kw/86 m, XL to 38-29-04/77-59-22
VA	Emory	90.7	WEHC	CP Mod: 8.7 kw/114 m, DA, XL to 36-46-01/81-50-18; Class C3 from A
WA	Coupeville	96.9	KWPA-LP	30 w/54 m, 48-14-43/122-39-42
WV	Keyser	94.1	WQZK-FM	13.2 kw/283 m, XL to 39-25-07/78-57-15
WV	Clarksburg	88.1	WKJL	19.2 kw-H/32 kw-V/149 m, 39-17-59/80-17-30
WY	Glenrock	98.5	KGRK	3.5 kw/518 m, 42-44-28/106-18-31
WY	Kaycee	97.7	NEW	51 kw-H/-3 m, DA, 43-43-12/106-39-02; Class C1
WY	Warren AFB	103.3	KRAN	CP Mod: 37 kw/78 m, DA, 41-09-34/104-43-19; Class C2

**- TECHNICAL CHANGES -**

**- AUXILIARY FACILITIES -**

AUX LICENSE ISSUED FOR:

FL	Cocoa Beach	104.1	WTKS-FM	9 kw/452 m, 28-34-51/81-04/32
FL	Palm Beach Gardens	99.5	WAFC-FM	1.6 kw/133 m, 26-47-58/80-04-33
KS	Columbus	105.3	KMOQ	11.5 kw/82 m, 37-07-34/94-42-12
MO	Crestwood	94.7	KSHE	30 kw/164 m, 38-36-47/90-20-09
MO	St. Louis	96.3	KIHT	30 kw/164 m, 38-36-47/90-20-09
NY	Brighton	94.1	WZNE	706 w/102 m, 43-09-23/77-36-43
NY	Fairport	93.3	WFKL	690 w/102 m, 43-09-23/77-36-43
NY	Rochester	91.5	WXXI-FM	4.4 kw/130 m, 43-08-07/77-35-03
NY	Rochester	101.3	WRMM-FM	680 w/102 m, 43-09-23/77-36-43
NC	Charlotte	103.7	WSOC-FM	17 kw/179 m, 35-18-06/80-53-22
NC	Charlotte	104.7	WKQC	1 kw/179 m, 35-18-06/80-53-22
NC	Concord	97.9	WPEG	1 kw/179 m, 35-18-06/80-53-22
NC	Gastonia	101.9	WBAV-FM	6.5 kw/179 m, 35-18-06/80-53-22
NC	Sanford	105.5	WFJA	550 w/115 m, 35-26-26/79-12-53
PA	Markleysburg	89.1	WLOG	1 w-V/-5 m, 39-44-17/79-27-01
PA	Philadelphia	95.7	WBEN-FM	11 kw/309 m, 40-02-30/75-14-24
PA	Philadelphia	102.9	WMGK	12 kw/308 m, 40-02-30/75-14-24
TN	Morrison	105.3	WOWC	850 w/-8 m, 35-40-51/85-46-32
TX	Bay City	101.7	KXGJ	65 kw/385 m, 28-48-03/96-07-32
TX	Beaumont	107.9	KQQK	100 kw/537 m, 30-01-01/94-32-47
TX	Bryan	99.5	KNFX-FM	1 kw/37.5 m, 30-39-09/96-20-17
TX	El Campo	96.9	KNTE-FM	100 kw/385 m, 28-48-03/96-07-32
TX	Houston	88.7	KUHF	100 kw/454 m, 39-34-27/95-29-37
TX	Krum	93.7	KNOR	20 kw/532 m, 33-29-05/97-24-44
TX	Madisonville	96.1	KAGG	1 kw/37.5 m, 30-39-09/96-20-17
TX	Port Arthur	93.3	KQBU-FM	100 kw/330 m, 30-03-05/94-31-37
TX	Port Arthur	98.5	KTJM	100 kw/537 m, 30-01-01/94-32-47
UT	Roy	107.9	KUDD	220 w/280 m, 40-48-29/111-53-23
UT	Salt Lake City	90.1	KUER-FM	6.8 kw/891 m, 40-36-29/112-09-36
VA	Arlington	105.1	WAVA-FM	19.5 kw/74 m, 38-58-35/77-06-52
WY	Douglas	92.5	KDAD	1 kw/-52 m, 42-44-34/104-25-18

**- TECHNICAL CHANGES -**

**- GRANTS FOR NEW STATIONS -**

CP GRANTED FOR:

AK	Sutton	89.5	NEW	200 w-H/45 m, 61-44-21/148-54-33; Class A
AR	Nashville	88.5	NEW	850 w-V/110 m, DA, 33-59-30/93-59-34; Class A
CO	Rifle	90.9	NEW	3 kw/3 m, 39-26-33/107-58-01; Class A
FL	Big Cypress	89.1	NEW	8.5 kw/45 m, DA, 26-17-50/81-06-26; Class C3
GA	Lumpkin	91.5	NEW	14 kw/79 m, DA, 31-56-15/84-33-15; Class C3
ID	Grangeville	90.9	NEW	1.9 kw/709 m, 45-51-42/116-07-25; Class C1
IA	Stanton	88.7	NEW	100 w-H//100 kw-V/120 m, DA, 41-05-15/94-52-12; Class C1
ME	Ellsworth	91.7	NEW	2 kw/58 m, DA, 44-32-31/68-25-58; Class A
ME	Fryeburg	91.5	NEW	430 w/387 m, DA, 44-02-51/70-49-19; Class C3
ME	Lincoln	89.5	NEW	330 w/170 m, 45-13-11/68-30-48; Class A
MN	Grand Portage	90.1	NEW	1 kw/70 m, 47-58-40/89-41-05; Class A
MO	Harrisonville	90.5	NEW	75 kw-V/141 m, DA, 38-20-47/94-17-14; Class C1
MT	Lewistown	99.7	NEW	2.3 kw/598 m, DA, 47-10-40/109-32-06; Class C1
NM	Tucumcari	90.5	NEW	5 kw/41 m, 35-11-32/103-44-15; Class A
NY	Fleming	88.7	NEW	174 w-V/108 m, 42-47-53/76-34-27; Class A
NY	Gloversville	90.9	NEW	1 kw/80 m, 43-09-42/74-31-00; Class A
OH	Johnstown	88.3	NEW	6 kw/134 m, DA, 40-09-20/82-36-51; Class B1
OH	Kenton	88.9	NEW	3 kw-V/34 m, 40-30-00/83-37-13; Class A
OH	Sinking Spring	90.7	NEW	3 kw/87 m, DA, 38-58-47/83-23-32; Class A
OR	Brookings	91.5	NEW	430 w/347 m, 42-07-23/124-17-56; Class A
TX	Balmorehea	104.5	NEW	100 kw/451 m, 30-44-06/103-42-37; Class C
TX	Canadian	91.1	KHHC	100 w/-54 m, 35-54-50/100-22-57; Class A
TX	Miles	95.5	NEW	25 kw/90 m, 31-40-11/100-19-28; Class C3
TX	Paris	91.9	NEW	1 kw/77 m, 33-39-37/95-31-37; Class A
WA	Elma	91.3	KZFL	100 w/-88 m, 47-00-38/123-22-59; Class A
WA	Medical Lake	88.1	NEW	6.5 kw-V/870 m, DA, 48-10-50/117-59-11; Class C1
WA	Westport	91.7	NEW	120 w/3 m, 46-51-39/124-06-31; Class A
WA	Sedro-Wooley	88.9	KPYU	2.5 kw/29 m, DA, 48-32-30/122-17-43; Class A
WA	South Bend	91.3	NEW	225 w/271 m, 46-41-44/123-46-17; Class A

**- TECHNICAL CHANGES -**

**- APPLICATIONS FROM EXISTING/PROPOSED FACILITIES -**

				<u>Applies for:</u>
AL	Heflin	89.1	WKNG-FM	1 kw-H (would drop H)/254 m, (to) DA, XL to 33-40-52/85-48-55
AZ	Vail	98.5	KRDX	910 w/145 m, DA, 31-55-39/110-37-57; FC to 103.7; CL to Corona de Tucson
CO	Rye	91.1	KRWA	130 w/34 m, 37-56-40/104-59-56; FC to 91.1; Class C3 to A
DE	Millsboro	107.9	WRBG-LP	100 w (would add V)/25 m, 38-34-13/75-18-12; FC to 99.5
FL	Lynn Haven	104.3	WWHV	CP Mod: 6 kw (would add V)/76 m, 30-10-47/85-38-11
GA	Toccoa Falls	90.9	WRAF	100 kw/172 m, DA, 34-35-57/83-21-55
HI	Nanakuli	106.7	KNAN	CP Mod: 25 kw/-7 m, XL to 21-18-46/158-05-51
IL	Macomb	89.7	WLWM	CP Mod: 11 kw/111 m, (to) DA, 40-26-58/90-42-25; Class B1
IN	Morgantown	90.9	WCJL	1.15 kw-H/15.5 kw-V/58 m, 39-19-17/86-31-08; CL to Paragon
IA	Clarinda	99.1	KMA-FM	100 kw/299 m, (to) DA, XL to 40-48-04/94-54-06; Class C2 to C1
IA	Hawkeye	89.9	NEW	APP Mod for 850 w/68 m, 42-52-43/91-49-37; Class A
LA	Tallulah	104.5	KLSM	CP Mod: 25 kw/100 m, XL to 32-22-13/91-07-39
ME	Dover-Foxcroft	103.1	WDME-FM	1.5 kw/204 m, (to) DA, 45-12-58/69-19-34
MD	Worten	90.5	WKHS	17.5 kw (would add V)/66 m, 39-16-55/76-05-26
MI	Carrollton	100.5	WSGW-FM	6 kw/100 m, (to) DA, XL to 43-31-00/83-55-09
MI	Imlay City	88.9	WWKM	1 w-H/6 kw-V/80 m, DA, 42-50-07/83-05-15
MI	Wyoming	88.1	WYCE	7 kw-V/50 m, DA, 42-54-43/85-41-00
MS	Mississippi State	89.9	WMAB-FM	64.3 kw (would add H)/324 m, 33-21-14/89-09-00
MO	Hayti	94.9	WGCQ	6 kw/20 m, 36-19-06/89-42-01; FC to 98.7
MO	Poplar Bluff	91.7	NEW	1.9 kw/76 m, DA, 36-49-03/90-27-20; Class A
MO	Sarcoxie	89.5	KITG	CP Mod: 34 kw/96 m, DA, 37-04-34/93-55-27; Class C2
MT	Helena	88.5	NEW	APP Mod: 5 kw-V (would drop H)/584 m, (to) DA, 46-44-52/112-19-47; Class C1
MT	Somers	91.3	KFLF	CP Mod: 1 kw/79 m, DA, XL to 48-04-07/114-02-20 [KCLKM-88.7 tower]
NE	Superior	103.9	KRFS-FM	12 kw/100 m, 40-06-20/98-04-38; Class C3 from A
NV	Amargosa Valley	101.1	KPKK	100 kw-H/588 m, (to) DA, XL to 36-38-26/115-55-15
NJ	Hazlet	89.3	WDDM	5 w/139 m, 40-23-45/74-10-31; FC to 104.7
NM	Hurley	105.5	KSIL	2.25 kw/165 m, 32-41-44/107-03-51; CL to Rincon
NC	Franklin	104.1	WNCC-FM	330 w (would add V)/421 m, 35-15-56/83-19-03
OH	Sandusky	102.7	WCPZ	28 kw/201 m, DA, XL to 41-23-48/82-47-31
OK	Poteau	107.3	KOMS	100 kw/577 m, 34-57-50/94-22-34
OR	Eagle Point	106.3	KZZE	1 kw/480 m, XL to 42-21-12/122-47-08
PA	Du Bois	107.3	WCOH-FM	23 kw/206 m, XL to 41-12-53/78-41-08
PA	South Waverly	96.1	WPHD	1.8 kw/187 m, XL to 32-01-55/76-41-02
PA	Telford	91.7	WBMR	237 w-H/500 w-V/77 m, DA, 40-18-48/75-17-29
PA	Wilkes-Barre	90.7	WCLH	CP Mod: 205 w/296 m, 41-11-11/75-51-33
SC	St. Stephen	106.1	WTUA	6 kw/68 m, XL to 33-10-26/80-00-46; CL to Pinopolis
TX	Borger	105.1	KDSH-LP	23 w/62 m, XL to 35-41-02/101-23-19
TX	La Grange	104.9	KBUK	CP Mod: 1.75 kw/161 m, XL to 29-52-32/96-52-39
VA	Ashland	100.1	WYFJ	6 kw/100 m, XL to 37-33-50/77-27-29; FC to 99.9
WY	Cody	89.1	NEW	17 kw/565 m, DA, 44-29-49/109-09-19; Class C1
WY	Gillette	99.1	KCOV-LP	60 w-H/16 m, XL to 44-17-20/105-30-35; FC to 95.7
WY	Hudson	102.9	NEW	9.6 kw/606 m, (to) DA, XL to 43-26-16/107-59-46; Class C to C1
WY	Lander	97.5	KDLY	62 kw/-111 m, 42-49-20/108-45-48
WY	Powell	88.1	NEW	600 w/481 m, 44-35-07/108-51-01; Class C3
WY	Shoshoni	97.1	NEW	CP Mod: 2.2 kw/606 m, (to) DA, XL to 43-26-16/107-59-46; Class C1
WY	Shoshoni	106.3	NEW	CP Mod: 2.2 kw/606 m, (to) DA, XL to 43-26-16/107-59-46; Class C to C1

**- APPLICATIONS REINSTATED -**

FL	Defuniak Springs	89.7	NEW	10 kw/82 m, DA, 30-54-12/86-08-15; Class C3
----	------------------	------	-----	---

**- APPLICATIONS FOR NEW STATIONS -**

				<u>Applies for:</u>
FL	Lake City	90.1	NEW	1 kw-V/39 m, DA, 30-12-05/82-39-03 [now there are 5 competing applications for this frequency at Lake City]
IA	Murray	91.9	NEW	30 kw/108 m, DA, 40-56-00/94-09-16; Class C2
MT	Victor	88.7	NEW	100 w-H/50 kw-V/69 m, DA, 46-13-47/114-14-01; Class C2
TX	Happy	91.7	NEW	700 w/28 m, 34-40-30/101-50-17; Class A
VA	Tappahannock	89.9	NEW	3.2 kw-V/65 m, 37-52-27/76-43-37; Class A

**TRANSLATORS and BOOSTER STATIONS**

**--CALL LETTER CHANGES--**

		<u>Old Call</u>	<u>New Call</u>				
AL	Montgomery	106.5	W300AN	W293BM	GA Trenton	106.1	W290BT W291CF
AL	Notasulga	91.9	W218CL	W220ED	GA Union	96.9	W246BF W245BO
AL	Odenville	106.1	W237CG	W291CG	HI Makaha	89.3	NEW KIPO-FM1
AR	Hope	95.5	K287AQ	K238BF	ID Pocatello	103.5	K283BJ K278BM
CA	Santa Clarita	105.1	KKGO-1	KKGO-FM1	IA Eagle Grove	90.5	K267BC K213EP
CA	Ferndale, etc	88.7	K206AU	K204GA	IA Marshalltown	95.3	K290BN K237FC [then]
CO	Jansen	88.1	K202CU	K201HV	IA Marshalltown	95.7	K237FC K239BF
CO	Masonville	106.1	K293BJ	K291BO	KY Hazard	102.5	W270BA W273BV
CO	Sterling	98.9	K201BZ	K255CD	MA Amherst	94.3	W282BC W229BI
CO	Sterling	107.7	K300CB	K299AO	MO Brookfield	91.1	K270BF K216GD
DE	Seaford	105.7	W286AS	W289BK	MT Bonner/Missoula	101.1	K212DE K266BK
FL	Fort Pierce	107.1	W298AK	W296BY	NV Las Vegas	88.9	K259BL K205FD
FL	Homestead	99.3	W257AC	W258BQ	NV Las Vegas	100.3	K259BL K262BX
GA	Hiawassee	97.5	W250AJ	W248BJ	NV Pahrump	100.3	K207EF K261DQ [then]
					NV Pahrump	100.7	K261DQ K264BC

NH Alstead	98.3	W251BE	W252CE	SC Fountain Inn	105.5	W290BQ	W288CC
NM Gallup	90.5	K215EG	K213EV	SC Santee	97.3	W249BL	W247BN
NY Arkwright	98.3	W255BP	W252CG	SC Summerville	92.1	W220CM	W221CI
NY Ithaca	98.7	W252AA	W254BF	SD Colonial Pine Hills	94.7	K288GB	K234BR
NY Middletown	94.9	W232BT	W235BI	TN Martin	96.1	W238BT	W241BE
NC Rocky Mount	105.7	W287AL	W289BL	TN Union City	103.3	W274BF	W277CA
OH Auburn	106.3	W238BJ	W292DT	TN Woodbury	95.7	W236BE	W239BM
OH Hillsboro	97.1	NEW	W246CA	TX Clarksville	106.3	NEW	K292GA
OK Berlin	91.5	K217EX	K218ER	TX Jacksonville	103.9	K283BK	K280FH
OK Enid, etc	100.1	K262BI	K261DR	TX San Angelo	90.9	K272EV	K215EZ [then]
OR Chapman	104.5	K284BF	K283BL	TX San Angelo	90.5	K215EZ	K213EW
OR Gold Beach	104.9	K288EF	K285GA	VA Fredericksburg	98.9	W249BF	W252CF
OH McConnellsville	104.5	W280CY	W283BL	WA Deer Park	99.5	K257EN	K258BU
PA Northampton	94.7	W232BU	W234AX	WV Bluefield	97.3	W246BE	W247BO
SC Arial	105.9	W289AN	W290BU	WV Charleston	88.9	W208AK	W205CG

### -TECHNICAL CHANGES -

- NOW ON THE AIR -

(antenna heights are AGL)

AL Capshaw	98.1	W251AC	250 w/131 m, DA
AL Headland	95.9	W240BM	250 w/11 m
AL Odenville	106.1	W237CG	10 w/13 m, DA
AL Oneonta	95.3	W237DH	10 w (adds H)/52 m; CL from Cleveland
AL Oxford	99.1	W256BH	110 w/34 m, DA
AR Sheridan	105.5	K288FP	150 w-V/9 m
AR Hope	95.5	K238BF	185 w (adds H)/69 m; FC from 105.3
CA Barstow	93.5	K228CO	223 w-V/6 m, DA
CA San Luis Obispo	88.9	K205DS	10 w/27 m
CA Santa Clara	105.1	KKGO-FM1	60 w/6 m, DA
CO Sterling	98.9	K255CD	10 w/78 m; FC from 88.1
CO Sterling	107.7	K299AO	75 w/52 m
FL Fort Pierce	107.1	W296BY	250 w-V/9 m
FL Homestead	99.3	W258BQ	250 w-V/12 m; CL from Key Largo
FL Tallahassee	94.3	W232BO	99 w/26 m
GA Decatur	102.9	W275BK	110 w/183 m
GA Hiawassee	97.5	W248BJ	10 w/30 m; FC from 97.9
GA Macon	105.9	W290AO	10 w/98 m
GA Union	96.9	W245BO	250 w/18 m; FC from 97.1
GA Valdosta	96.1	W241BG	80 w/32 m
ID Pocatello	95.3	K237FA	41 w/8 m, DA
ID Pocatello	102.9	K278BM	99 w/64 m; FC from 103.5; CL from American Falls
IA Eagle Grove	90.5	K267BC	60 w/70 m; FC from 101.3
IA Estherville	96.3	K242BQ	10 w/32 m
IA Marshalltown	95.3	K237FC	5 w-V/4 m; FC from 105.9
IA Ottumwa	91.5	K218EA	100 w/36 m
KS Manhattan	98.3	K252EV	100 w/71 m
KS Manhattan	99.5	K258BT	170 w/80 m
KY North Corbin	97.9	W250AL	250 w/46 m
LA Baker	97.7	K249DV	13 w/114 m
MD White Marsh	104.9	W285EJ	10 w-V (drops H)/84 m
MO Brookfield	91.1	K270BF	223 w/46 m; FC from 101.9
MT Sheridan	93.3	K227BM	250 w-V/10 m, DA
NV Las Vegas	88.9	K205FD	170 w/6 m; FC from 99.7
NV Las Vegas	100.3	K262BX	250 w-V/6 m, DA
NV Pahrump	100.7	K264BC	1 w/6 m; FC from 101.1
NV Sunrise Manor	94.5	KVBE-FM1	340 w/62 m
NH Alstead	98.3	W252CE	10 w/4 m; FC from 98.1; CL from Keene
NH Keene	99.1	W256BJ	250 w/50 m
NY Alfred	94.3	W232BQ	5 w-V/5 m, DA
NY Chester	94.1	W231BP	10 w/15 m, DA
NY Arkwright	98.3	W252CG	20 w/6 m; FC from 98.9; CL from Forestville
NY Middletown	94.9	W235BI	99 w-V/15 m, DA
NY Middletown	105.7	W289BE	99 w-V/15 m, DA
NY Nedrow/Lafayette	98.1	W251AK	6 w/122 m, DA
NC Rocky Mount	105.7	W289BL	10 w/122 m; FC from 105.3
OH Hillsboro	97.1	W246CA	20 w/6 m
OK Berlin	91.5	K218ER	115 w/78 m; FC from 91.3
OK Enid, etc	100.1	K261DR	250 w-V (drops H)/9 m; FC from 100.3
OR Reedsport	101.9	K269FO	75 w/37 m, (drops DA)
PA Berwick	94.7	W234BH	230 w-V/14 m, DA
PA Monroeville	97.5	W248AR	10 w/105 m
SC Arial	105.9	W290BU	250 w/26 m; FC from 105.7
SC Charleston	100.1	W261AJ	85 w-V/21 m
SC Santee	97.3	W247BN	250 w-H/10 m, DA
SC Summerville	92.1	W221CI	27 w/76 m; FC from 91.9
SD Colonial Pine Hills	94.7	K234BR	79 w-V/8 m, DA; FC from 105.5
SD Mitchell	103.5	K278BJ	180 w/26 m
SD Rapid City	97.5	K248BT	7 w/100 m; this is an STA due to co-channel overlap with KRKI Newcastle, Wyoming
SD Watertown	91.9	K220IT	79 w/24 m
TN Union City	103.3	W277CA	250 w/145 m; FC from 102.7
TN Woodbury	95.7	W239BM	10 w-V/11 m
TX Clarksville	106.3	K292GA	250 w/85 m



TX	Jacksonville	103.9	K280FH	100 w/36 m; FC from 104.5
TX	Pampa	93.5	K228EB	62 w/90 m
TX	San Angelo	90.9	K213EW	1 w-V/10 m; FC from 91.5
UT	Bountiful	104.7	KYLZ-FM4	2.2 kw/19 m, DA
UT	Ogden	104.7	KYLZ-FM1	500 w/21 m, DA
UT	Provo	104.7	KYLZ-FM2	600 w/20 m, DA
UT	Salt Lake City	97.5	KZZQ-FM4	2.1 kw/17 m, DA
UT	Salt Lake City	101.5	KEGA-FM3	2.1 kw/17 m, DA
UT	Salt Lake City	102.3	KDUT-FM2	99 w/21 m
UT	Salt Lake City	103.1	KJQN-FM2	2.1 kw/17 m, DA
UT	Salt Lake City	104.7	KYLZ-FM3	2.1 kw/17 m, DA
UT	Salt Lake City	106.1	KBMG-FM2	2.1 kw/17 m, DA
UT	Salt Lake City	107.9	KUDD-FM1	220 w/13 m
VT	Barre	96.5	W243AT	99 w-V/11 m, DA
VA	Crewe	97.1	W246BZ	38 w (adds H)/38 m; FC from 107.7
VA	Fredericksburg	98.9	W252CF	3 w-H (drops V)/5 m, DA; FC from 98.3
WA	Ellensburg	88.5	K203EN	66 w/45 m, DA
WA	Kennewick	88.7	K204CZ	10 w-V/19 m, DA
WV	Charleston	88.9	W205CG	16 w/46 m
WV	Summersville	95.7	WSWW-FM1	110 w/23 m, DA
WY	Buffalo	93.7	KYTI-FM1	CP Mod: 250 w-V (drops H)/10 m, (to) DA
WY	Buffalo	94.9	KZWY-FM1	CP Mod: 250 w-V (drops H)/7 m, DA
WY	Buffalo	104.9	KLQQ-FM1	CP Mod: 250 w-V (drops H)/12 m, DA
WY	Buford	93.5	K228EZ	34 w/14 m; FC from 93.3

**- TECHNICAL CHANGES -**

**- CONSTRUCTION PERMITS GRANTED -**

(antenna heights are AGL)

AL	Blue Mountain	96.3	W240BY	80 w/32 m; FC from 95.9
AK	Elfin Cove	92.1	K221EP	250 w-V/26 m, DA
AK	Seward	104.1	K281AZ	20 w/16 m
AR	Sheridan	105.5	K288FP	250 w/9 m
CA	Taft	95.7	K239BB	200 w-V/6 m, DA; FC from 106.5
FL	Marathon	105.7	W288BV	250 w-V/12 m; FC from 105.5; CL from Key West
IL	Clinton	103.3	W277BE	50 w/63 m
IA	Marshalltown	95.7	K237FC	150 w (adds H)/30 m; FC from 95.3
KY	Hazard	102.5	W273BV	8 w/26 m; FC from 101.9
LA	Baker	97.7	K249DV	13 w/114 m
MA	Amherst	94.3	W232BW	CP Mod: 250 w/27 m, DA; FC from 93.7
MS	Ridgeland	99.1	W257CB	38 w (adds H)/57 m; FC from 99.3
NV	Charleston Park	105.5	K288FN	7 w/30 m
NV	Pahrump	100.3	K264BC	45 w-V (drops H)/6 m (to) DA; FC from 101.7
NM	Gallup	90.5	K213EV	145 w/23 m; FC from 90.9
NC	Belmont	93.1	W228CC	15 w/11 m; FC from 93.5; CL from Charlotte
NC	New Bern	103.9	W282BN	38 w/70 m; FC from 104.3
OK	Berlin	91.5	K217EX	115 w-V/78 m; FC from 91.3
OR	Gold Beach	104.9	K285GA	77 w/9 m; FC from 105.5
SC	Hollywood	98.9	W255BW	50 w-V/21 m
TX	Austin	89.1	K206CF	34 w/169 m
TX	Mount Pleasant	100.9	K265DW	250 w/59 m
UT	Provo	106.1	KBMG-FM3	600 w/20 m, DA
UT	Salt Lake City	100.7	KYMV-FM2	2.05 kw/17 m, DA
UT	Salt Lake City	101.5	KEGA-FM3	2.1 kw/17 m, DA
UT	Salt Lake City	102.3	KDUT-FM2	99 w/21 m, DA
UT	Salt Lake City	103.1	KJQN-FM2	2.1 kw/17 m, DA
UT	Salt Lake City	106.1	KBMG-FM2	2.1 kw/17 m, DA
WA	Westport	94.7	K234AU	250 w (adds H)/7 m
WY	Lander	107.7	K299BC	250 w/9 m
VA	Crewe	97.1	W299AH	38 w/38 m; FC from 107.7

**- DISMISSALS -**

AL	Montgomery	106.5	W293BM	APP: changes	IA	Iowa Falls	91.3	K217FU	APP: changes
AZ	Strawberry	98.9	K255AQ	APP: changes; RoA	KY	Hazard	103.3	WRZD-LP	APP: changes
AR	Hot Springs	88.7	NEW	APP: new station; RoA	KY	Morganfield	88.7	WEUC	APP: changes
CO	Fountain	96.1	KIBT	APP: auxiliary permit	MI	Alpena	89.1	-----	APP: new station
CA	Taft	95.7	K293AG	APP: changes	NM	Tucumcari	90.9	KVIJ	APP: changes
CO	Greeley	104.7	KELS-LP	APP: changes	NY	Geneva	95.7	W292DQ	APP: changes
DE	Millsboro	107.9	WRBG-LP	APPs to move to 102.9, 103.1 & 106.5	NC	Charlotte	93.5	W228CC	APP: changes; RoA
FL	Edgewater	95.3	WLGM-LP	APP: changes; ROA	NC	Kinston	93.7	W229AY	APP: changes
FL	Lake City	90.1	-----	APP (1 of 5): new station [73.509 & 73.510 violations]	OK	Hillsdale	88.3	-----	APP: new station (S)
GA	Atlanta	92.9	WZGC	Auxiliary authorization	OK	Stillwater	88.3	-----	APP: new station (S)
GA	Augusta	90.7	WACG-FM	APP: changes	PA	Bethlehem	91.3	WLVR-FM	APP: changes (73.510 violation)
GA	Lumpkin	90.1	WXIV	APP: changes	VA	Spotsylvania	89.5	WWED	CP Mod (73.525 violation)
GA	Valdosta	96.1	W241BG	APP: changes	TN	Lebanon	91.5	WFMQ	APP: changes;
HI	Kalaoa	91.7	K220HM	APP: changes	TX	Hornsby	91.7	KOOP	APP: changes
IN	Wilkinson	89.1	WSMJ	APP: changes	TX	Austin	91.7	KVRX	APP: changes
IA	Atlantic	91.9	-----	APP: new station (S)	TX	Austin	(73.207 violations)		
IA	Elliott	91.9	-----	APP: new station (S)	UT	Park City	99.9	K252EH	APP: changes
					VA	Wytheville	93.3	W227BC	APP: license

renewal			WY Powell	89.1 -----	APP: new
WA Baring	89.1 -----	APP: new station	station (S)		
WA Chelan	89.3 -----	APP: new station			
WA Deer Park	89.1 -----	APP: new station			
WA Granger	88.7 -----	APP: new station			
WA Moses Lake	88.7 -----	APP: new station			
WA Oroville	89.3 -----	APP: new station			
WA Skykomish	89.1 -----	APP: new station			
WA Soap Lake	88.7 -----	APP: new station			
WA Tekoa	89.1 -----	APP: new station			
WY Cody station (S)	88.1 -----	APP: new			
WY Cody station (S)	88.3 -----	APP: new			
WY Cody station (S)	88.9 -----	APP: new			
WY Meeteetse new station (S)	89.1 -----	APP:			

**Violation Codes:**  
73.207 - Minimum distance separation between stations  
73.509 - Prohibited overlap  
73.510 - Antenna systems  
73.515 - Transmitter location not providing 60 dbu coverage over CoL  
73.525 - TV Channel 6 protection  
73.872(c)(4) - Non-universal time-sharing agreement  
73.7002 - Fair distribution of service on reserved band FM channels

(S) - settlement  
\* - Petition for reconsideration has been filed

**- OTHERNEWS -**

AL Capshaw	98.1	W251AC	Is simulcasting WLOR-1550 Huntsville with <i>True Oldies 24/7</i> .
AK Homer	88.9	KMJG	Is silent
AK St. Michael	92.9	KAMP-LP	License cancelled; call deleted
AZ Globe	88.5	KLKA	Is silent
AR Mountain Home	94.9	K235AV	License cancelled; call deleted
CO La Junta	90.1	K211EK	License cancelled; call deleted
IN Angola	88.3	WEAX	Fined \$7200 (initially \$9000) for repeated public inspection file violations
MA Boston	88.9	WERS	Fined \$8000 (reduced from the initial \$10,000) for public file violations
MO Concordia	88.1	KYRV	Is silent
NM Belen	90.7	KQGC	Is silent
NY DeRuyter	105.1	WWDG	Is silent
NY Dannemora	107.1	WNMR	Is silent
OK Ketchum	107.5	KOSN	Is silent
SD Sioux Falls	89.1	KAUR	Will go silent after (Augustana College) classes finish this spring (but continue streaming). There is no word whether the station will return to the air or surrender the license to the FCC.
TX Tyler	94.1	K231AL	License cancelled; call deleted
UT Logan	90.5	KZCL	Is silent
WA South Bend	107.9	KLSY	Is silent

\*\*\*\*\*  
Thanks to Shawn Axelrod, Bruce Elving, Deane McIntyre, Ed Soule and Upper Midwest Broadcasting.com for submitting updates. If you hear any changes occur on your FM dial, share the news! 73  
\*\*\*\*\*

## IT'S ALLENTOWN IN 2009!

**Friday September 4 – 6**

This years NRC/WTFDA Convention will be held in the Lehigh Valley of Pennsylvania, in Allentown. It will again be a joint convention. Besides the regular events such as the auction, banquet, and quiz, the AAA Lehigh Valley Ironpigs minor league baseball team will be in town, in their last home stand of the season. The convention will be held at the Rodeway Inn 1151 Bulldog Drive, Allentown, PA 18104. This hotel is conveniently located near Routes 22, 309, and the Northeast Extension of the PA Turnpike. It is also close to the Lehigh Valley International Airport.



1). To reserve your room call the Rodeway Inn at 1-888-395-5200. Make sure to mention you are with the National Radio Club for the \$69 rate (before Taxes). Up to 4 people can stay in the room. You can get 1 king bed or 2 double beds. The website for the motel is [www.rodewayinnallentown.com](http://www.rodewayinnallentown.com). This motel was formerly known as the Days Inn Conference Center.

2). Convention registration is \$45. Make checks payable to "National Radio Club" and mail them to Bob Smolarek at 31 Mark Drive, High Bridge, NJ 08829. You can also send in your registration fee using Paypal from the NRC website at <http://www.nrcdxas.org>.

3). Send any auction items to 31 Mark Drive, High Bridge, NJ 08829

4. More details to follow concerning tower hunting, tours, and a guest speaker. So be in Allentown this Labor Day!



# PHOTO NEWS

Jeff Kruszka, Editor  
 1909 Lost Lake Pl.  
 Pearland, TX 77581  
 jkruszka@sbcglobal.net

June 2009

More good DTV catches from Steve Rich of Indianapolis, IN:



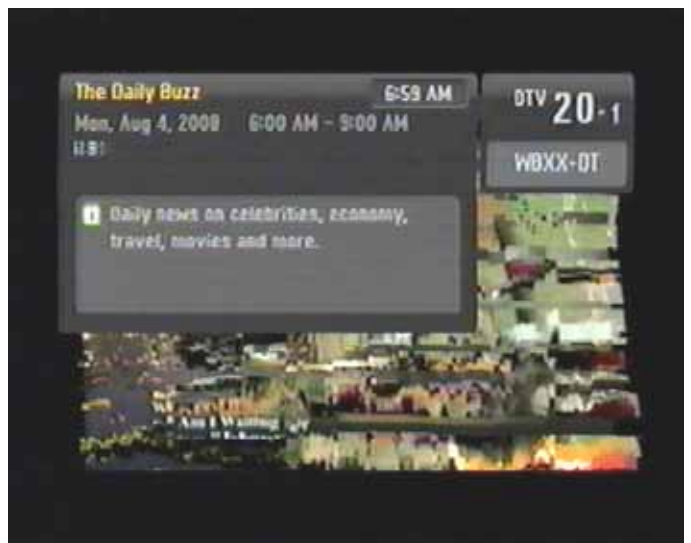
KNLC-DT-14 St. Louis, MO  
 335 mi Tr seen 8/1/08



KOMU-DT-36 Columbia, MO  
 335 mi Tr seen 8/1/08



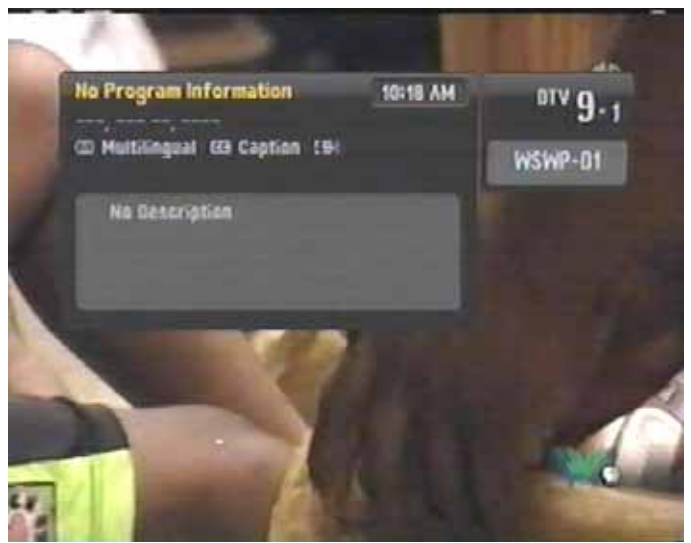
WATE-DT-26 Knoxville, TN  
 297 mi Tr seen 8/4/08



WBXX-DT-50 Crossville, TN  
 282 mi Tr seen 8/4/08



WCYB-DT-28 Bristol, VA  
 325 mi Tr seen 8/4/08



WSWP-DT-53 Grandview, WV  
 310 mi Tr seen 8/4/08



WDBJ-DT-18 Roanoke, VA  
374 mi Tr seen 8/4/08



WEMT-DT-38 Greenville, TN  
328 mi Tr seen 8/4/08



WFIQ-DT-22 Florence, AL  
382 mi Tr seen 11/13/08



WJHL-DT-58 Johnson City, TN  
325 mi Tr seen 8/4/08



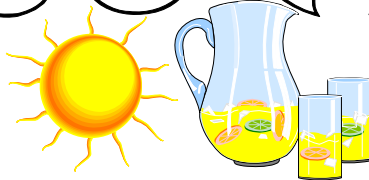
WLFB-DT-14 Bluefield, WV  
323 mi Tr seen 8/4/08



WNEM-DT-22 Bay City, MI  
271 mi Tr seen 8/4/08

73's, JEFF

# SOUTHERN FM DX



**John Zondlo**  
**4009 Driftwood Circle**  
**Yukon, OK 73099**  
**southernfmdx@wtfd.org**  
**Deadline: 15th**

**June 2009**

Fred Nordquist – 137 Travis Hill Rd. – Moncks  
 Corner, SC 29461

4/9 Tr

2359 WGLF 104.1 FL Tallahassee, RDS PI 65A3  
 305

4/10 Tr

0028 WWLD 102.3 GA Cairo, hip hop 316  
 0035 WQYK 99.5 FL St. Petersburg, ID, k 393  
 Plus many others in northern FL and southern GA not  
 usually heard during tropo openings. All relogs. Then  
 good tropo to northeast NC this AM.

0840 WBNK 92.7 NC Pine Knoll Shores, RDS PI  
 58A8, "Fish FM" 229

0849 WNTB 93.7 NC Topsail Beach, RDS Big  
 Talker FM //106.3

4/18 Tr

2030 WLOQ 103.1 FL Winter Park, j, SID 335

4/25 Tr

0040 WHRO 90.3 VA Norfolk, RDS 316  
 0043 WBNK 92.7 NC Pine Knoll Shores, RDS PI  
 58A8, "Fish FM" 229

0843 WWIP 89.1 VA Cheritan, RDS The Word  
 359

2047 WQCS 88.9 FL Fort Pierce, RDS PI 7F2E  
 401

4/26 Tr

1426 WPBZ 103.1 FL Indiantown, RDS PI 7C77  
 Buzz 103 428

1431 WRMA 106.7 FL Fort Lauderdale, RDS PI  
 82C4 Romance, SS 499

1444 WAFC 99.5 FL Clewiston, SS, "La Ley FM"  
 453

1455 WEDR 99.1 FL Miami, RDS PI 5F97  
 99 Jams 501

1512 WFLC 97.3 FL Miami, RDS PI 62FC 501

1516 WMGE 94.9 FL Miami Beach. SS 501

1517 WLVE 93.9 FL Miami, many ads 501

1517 WLRN 91.3 FL Miami, RDS PI 737B 500

1517 unID 92.1 ?? ??, SS talk, probably WRCX

1523 WKCP 89.7 FL Miami, RDS PI 6F53, c  
 531

1526 WIRK 107.5 FL West Palm Beach, RDS,  
 SID, k 446

1530 WAMR 107.5 FL Miami, RDS PI 55P1 Amor  
 107, SS 501

1536 WBGG 105.9 FL Fort Lauderdale, HD 490

1538 WHQT 105.1 FM Coral Gables, RDS PI  
 68D7 501

1555 WLYF 101.5 FL Miami, "Lite FM" 501

1604 unID 96.1 ?? ??, quiet jazz, no breaks,  
 who could this be? A FL  
 pirate?

1656 WHDR 93.1 FL Miami, "Pure Rock" 501

1726 WRTO 98.3 FL Gould, SS, RDS PI 8388,  
 "La Kalle" 531

5/3 Tr

2037 WLDI 95.5 FL Fort Pierce, HD, "Wild" 422

2038 WSYR 94.7 FL Gifford, RDS 'KCNX,' "Star  
 94.7" 392

2043 WAVW 92.7 FL Stuart, HD, 'KCPS,' k 411

2044 WRLX 92.1 FL West Palm Beach, SS//  
 Webstream 443

2050 WGYL 93.7 FL Vero Beach, "93.7 The  
 Breeze" 389

2107 WQCS 88.9 FL Fort Pierce, HD1/HD2/HD3  
 401

2212 WPBZ 103.1 FL Indian Town, HD1/HD2  
 428

5/4 Tr

2210 WLDI 95.5 FL Fort Pierce, HD 422

2210 WRMF 95.9 FL West Palm Beach, RDS  
 446

2213 WKGR 98.7 FL Fort Pierce, HD1/HD2 422

2217 WPBZ 103.1 FL Indiantown, HD 453

2218 WAFC 99.5 FL Clewiston, SS 453

2226 WQCS 88.9 FL Fort Pierce, RDS 401

2228 WRLX 91.2 FL West Palm Beach, RDS,  
 SS 443

2240 WAVW 92.7 FL Stuart, "92.7 Wave-FM,"  
 K 411

2243 WMIA 93.9 FL Miami Beach, "93.9 MIA"  
 501

2243 WBGF 93.5 FL Belle Glade, SS, "Radio  
 Lobo" 454

2302 WFLC 97.3 FL Miami, Delilah 501

2312 WEDR 99.1 FL Miami, r&b, local ad 501

2345 WMGE 94.9 FL Miami Beach, SS 502

5/5 Tr

1835 WAMR 107.5 FL Miami, RDS AMOR 107,  
 SS 501

1835 WIRK 107.9 FL West Palm Beach, RDS,  
 K 446

1851 WRMA 106.7 FL Fort Lauderdale, RDS  
 Romance, SS 499

1853 WBGG 105.9 FL Fort Lauderdale, RDS  
 'KDAC,' "Wild 95.5" 422

1901 WPBZ 103.1 FL Indiantown, HD1/HD2  
 428

1904 WKGR 98.7 FL Fort Pierce, HD1/HD2  
 428

1909 WRMF 97.9 FL Palm Beach, RDS, r 446

1915 WLDI 95.5 FL Fort Pierce, RDS 'KAUC,'  
 "Wild 95.5" 422

1917 WMGE 94.9 FL Miami Beach, SS 501

1917 WMIA 93.9 FL Miami Beach, "93.9 MIA,"  
 No RDS 501

1925 WHDR 93.1 FL Miami, "The New 93  
 Rock" 501

1925 WAVW	92.7	FL	Stuart, RDS 'KCPS,' k 411	<u>5/8 Tr</u>			
1935 WRLX	92.1	FL	West Palm Beach, SS mx 443	1230 WUFF	97.5	GA	Eastman, "Wolf Country" 201
2015 <u>WCMQ</u>	92.2	FL	Hialeah, SS ads 517	2010 WMIA	93.9	FL	Miami Beach 501
<u>5/6 Tr</u>				2013 WAMR	107.5	FL	Miami, SS 501
2036 WKCP	89.7	FL	Miami 531	2135 WEDR	99.1	FL	Miami, "99 Jamz," o/u WQIK 501
2040 WAMR	107.5	FL	Miami, SS 501	2136 WFLC	97.3	FL	Miami 501
2122 <u>WFLM</u>	104.7	FL	White City, "104.7 Flame" 400	2202 WHDR	91.3	FL	Miami, "93 Rock" 501
2149 WHYI	100.7	FL	Fort Lauderdale, local ads 501	2231 WLYF	101.5	FL	Miami, "Lite FM" 501
2155 WKIS	99.9	FL	Boca Raton, local ads 499	South FL tropo still hanging in there but much weaker.			
2213 <u>WAVK</u>	97.7	FL	Marathon, "97.7 Wave FM" 586	<u>5/9 Tr</u>			
2230 <u>WAFG</u>	90.3	FL	Fort Lauderdale, rel 485	2245 WRMF	97.9	FL	Palm Beach, ID, r 486
2338 WHDR	93.1	FL	Miami, RDS PI 6783 501	2246 WKGR	98.7	FL	Fort Pierce, RDS 428
2340 WMIA	93.9	FL	Miami Beach, RDS PI 13DA 501	2352 WMIA	93.9	FL	Miami Beach, "93-9 MIA" 501
<u>5/7 Tr</u>				2354 WAMR	107.5	FL	Miami, SS 501
2344 WMIA	93.9	FL	Miami Beach, "93-9 MIA" 501	<u>5/10-11</u>			
2347 WAMR	107.5	FL	Miami, SS 501	Coastal tropo back to normal with only central Florida in on TV/FM at 300+ miles			
2352 WEDR	99.1	FL	Miami, "99 Jamz" 501	FM totals now at 1720			
2355 WFLC	97.3	FL	Miami 501				

## THOSE AMAZING ES CLOUDS!

ROB GRANT

I've seen quite a few neat letters recently about DXing in the past. Let me share the story of my first encounter with sporadic-E.

I had been interested in getting TV stations in other cities long before I had heard such strange terms as "DXing", "trop", "skip" or "noise figure". I had discovered, when I was 6 years old, that tuning in channel 11 with the rabbit ears in my Eastside Detroit home yielded a snowy picture with commercials for stores in Ohio.

I had not heard of "DXing" until 1976, and only really got into the hobby in 1978, when I found pursuing distant stations after locals had gone silent for the night was a way to beat the boredom of a night of insomnia.

After joining the WTFDA, I had read in the VUDs about sporadic-E skip. The very thought that I could get a station from 1000 miles with a strong signal sounded too good to be true.

Now let's go back to the cool afternoon of May 22, 1979. I had been riding my bicycle around the neighborhood (daily routine), thinking what I had read about Es. Then, stopped at a light, I saw some very faint, high, wispy bluish clouds around the Sun. I said to myself "those are high ion clouds - E-skip is in! (\*).

I rushed home as fast as I could and ran to the RCA CTC-38 color TV set with rabbit ears. Local WJBK was showing "venetian blinds" CCI!. I went to channel 5 and saw the "Previn in Pittsburgh" concert, PBS, fading in and out - it WAS Es!! After seeing the same program I already guessed it must be WEDU, and I stuck with it to the end of the program and saw their ID.

I wrote WEDU a letter with my reception info, and received a verification letter from Chief Engineer Leo Boehl, who wrote "I hope you will see WEDU again in the future" (as us DXers know, his hope has certainly been answered many times :-).

(\*) Of course, the sight of clouds to the WNW and the sporadic-E to the south was nothing but a total co-incidence, my belief that I could see "Es clouds" was/is scientifically bankrupt!



# Eastern U.S. TV DX

Featuring reports from AL, CT, DC, DE, FL, GA, IN, KY, MA, MD, ME, MI, NC, NH, NJ, NY, OH, PA, RI, SC, TN, VA, VT, and WV, along with the Canadian Provinces of NB, NF, NS, ON, PEI, and PQ.

Send reports by the 15<sup>th</sup> of each month to:

Nick Langan

1040 Riverview Drive

Florence, NJ 08518

E-mail: [nickl@wtfd.org](mailto:nickl@wtfd.org)

---

## *The Editor's Note*

The birth of a new DX season is always exciting and this year it takes on more meaning as the landscape promises to be vastly different pre and post July 12. E-Skip is starting to fire up pretty much everywhere across the east, and tropo has been decent at times in the Mid-Atlantic and coastal Northeast. Now more than ever we'd love to have reports of your last few receptions of analog skip targets...get them in!

We've got reports from Robert Grant and Harry Hayes inside this ETVDX.

---

**Robert Grant (N8NU)** 231 E Temperance Rd.  
Temperance, MI 48182  
[Rg3d@yahoo.com](mailto:Rg3d@yahoo.com)  
Temperance is in SE corner of MI. (EN81fs)  
Sylvania (Funai) 6427GFF analog/digital (2005).  
Channel Master Advantage 3020 on chimney at about  
33'  
Or small RCA V/U combo inside attic.

### 11-14 Tr

0600 WDBJ 7 VA Roanoke 364

### 12-15 GW

0003 WBGU 27 OH Bowling Green and WBGU-DT 56  
OH Bowling Green both noted silent

1115 WBGU-DT 27 OH Bowling Green EN81 48

### 2-17 GW

2359 WGTE 30 OH Toledo silent

WPXD 31 MI Ann Arbor silent

WPXD-DT 33 MI Ann Arbor silent

WMYD 20 MI Detroit Nitelite

### 2-20 GW

1425 WPXD-DT 31 MI Ann Arbor EN72 49

### 3-1 Tr

0324 WILX-DT 10 MI Jackson EN72 70

### 4-23 Tr

2116 WFUM-DT 28 MI Flint EN83 77

### 5-12 Tr

2325 WCMU-DT 26 MI Mt Pleasant EN73 160

### 5-13 Tr

0055 WEYI-DT 30 MI Saginaw EN83 100

**Says Robert:** "The winter in Michigan, is, of course, the slow time of year for TV DX. 2008-09 will be remembered for being particularly slow. Winter came very early, with an arctic blast shutting down the deteriorating old rotator on the CM3020 on the chimney, so another antenna was placed on another rotator in the attic.

This is one of few winters I can remember when no trace of sporadic-E was observed at any time (people elsewhere had a little skip, but none made it to VHF up here).

The long delayed thaw in April finally allowed the chimney rotator to be turned again, but the usual springtime daytime tropo over Lake Erie has been unexpectedly absent this year. New loggings were all the result of the partial digital transitions on 2-17 and 4-16, though the logging of WCMU-DT does stand out."

---

### **Harry Hayes**

9 Henry Street  
Wilkes-Barre, PA 18702

Equipment: 1991 Zenith Sentry TV, VHF: Quad loop on south facing window, Kitz Technologies KT-100VG amp. UHF: 6' window screened dish in attic, hand turned, Winegard 7800 amp., Zenith DTT-901 digital TV box.

### 4/2/09 Tr

0815 WHP-21 Harrisburg PA

0815 WHTM-27 Harrisburg PA

0815 WPMT-43 York PA

### 4/30 Tr

0900 WTXF-29 Philadelphia

### 5/2 Es

1500 UNID-2

1833 KTBS-3 Shreveport LA

**Says Harry:** "I am returning to TV DXing after having been largely inactive for the last couple of years. Analogs still on the air here are W07BV-7 Wilkes-Barre, W14BQ-14 Scranton, WNEP-16 Scranton, W19AR-19 Clarks Summit, PA, W24DB-24 Clarks Summit, W26AP-26 Scranton, W54BO-54 Kingston, PA and W67DE Newport Township. These are the ones that I can pick up. My log total is 268 analog from here and 0 digital. I guess we'll see this year if any distant DTV can penetrate the walls to an attic antenna."



# Western U.S. TV DX

Featuring reports from AK, AR, AZ, CA, CO, HI, IA, ID, IL, LA, KS, MN, MO, MS, MT, ND, NE, NM, NV, OK, OR, SD, TX, UT, WA, WI, and WY, along with the Canadian Provinces of AB, BC, MB, SK, and YT.

Send reports by the 15<sup>th</sup> of each month to:

Nick Langan  
 1040 Riverview Drive  
 Florence, NJ 08518  
 E-mail: wtvdx@wtfda.org

## The Editor's Note

E-skip season has gotten off to a pretty decent start with a few openings in California and along the west coast, along with in Texas and the deep south. Hopefully the activity will continue to spread around and keep things interesting. We're probably not too far away from the first good plains trop opening as well.

We have reports from William, Dennis, Fritze, and Jeff inside this edition of WTVDX.

### William Draeb

1304 Ellis St.  
 Kewaunee, WI 54216

5/5/09

Here's a general report. No Es seen yet this season. Saw a few more new Tropo DT's. Five from South Bend. WNDU-42 DT, WBND-49 DT, WSJV-58 DT, WHME-48 DT, and WNIT-35 DT. I also saw new WVCY-22 DT. WNDU-42 DT was in for about 15 seconds. That channel is usually occupied by local WPNE-42 DT here. I finally figured out why I wasn't getting anything on ch. 22. After a call to the 800 number on my converter box remote I concluded that that channel was locked out. I believe everything is OK now. Other things, WFQX-47 DT is still on 47. They're supposed to move to Ch. 32. I don't know if WAOW-29 DT is on Ch. 9 yet. I haven't seen them on either channel in a while. Digital total now at 57.  
 Bill

### Dennis Park Smith

3605 Sam Remo Drive  
 Santa Barbara, CA 93105-2523  
 Tel: (805)687-7803  
 Times PST

My Place – TV rxs with indoor antennas:

- 1<sup>st</sup> floor: Oldish 13" analog MGA/Mitsubishi CS1395, rabbit ears & bow-tie
- 2<sup>nd</sup> floor: Feb-2008 20" LG HD flat-screen 20LS7D, ears & 2-bay bow-tie

Don Voegelé's place – eqp with outdoor ants:

- 1981 13" Samsung analog CT 300 TM, Insignia(/LG) DTV box NS DXA1 APT, with VHF medium-range log antenna
- Finco UHF 5-ft dish antenna.
- My LG 20" flat-screen on occasion

This report is for April 2009. Don Voegelé is not presently in Santa Barbara, but he has very kindly provided me access to his place and his big antennas to DX whenever I wish. I don't know my SBarb analog total since starting apx 1950 as my station listings weren't organized (may be 80+). Also to clarify, Wasco CA my occasional DX place is apx 25 miles NW of Bakersfield.

Southern-Calif coastal tropo ducting wasn't much. First half April wx was unsettled & cool. Second half warmed some with hint of hot summer starting Apr 19. Here are coastal tropo condx btw SBarb & San Diego/Tijuana, up to 200mi/320km.

Apr 1-4am	None
Apr 4eve-6	Poor
Apr 7-12	None (wind-showers)
Apr 9-11	<i>Out of town, in WASCO</i>
Apr 13	Poor
Apr 14 – 17am	None (windy)
Apr 17aft – 23	Variably poor/fair (warming)
Apr 24-29	None (windy, some cooling)
Apr 30	Variably poor

All loggings are Calif. New underlined. Thanks to Doug Smith for update details. Distances are miles and direction.



Apr 3 apx 1330-1530, Don's place  
TV sightings as prev reported starting Feb,  
plus these (no tropo condx):

KABC-DT 53 Los Angeles ABC 90 E  
K45DU 45 Ventura TBN apx 40 E  
K57KF 57 Van Nuys Almavision 90 E  
(KJLA 57 Ventura noted definitely **off**)  
KTAV-LP 69 Altadena Almavision 100? E

Apr 9-11 in WASCO

No tropo. A new local is on (35 mi SE):  
KDBK-LP 41 Caliente(/Bakf)clr-barTP-ID  
No further sign of KJOI-LP 12 Caliente (/Bak)  
If indeed I saw it (was tentative, no ID).  
Wasco analog total is now 224 (1 new).  
Wasco DTV total remains 17.

Apr 21 1030-1240, Don's place

Poor/fair tropo SDiego/Tijuana.  
However, L.A. area not as good.  
Some sigs as prev this yr, plus:  
KBNT-LP 17 San Diego Uni apx 175 SE  
(occas audio o/nearby KSBB-CA 17 SBarb)

Apr 23 1825-2040, Don's place

Poor tropo SDiego/Tijuana, & L.A. area  
Good again incl these, all Mt. Wilson:  
KAZA-DT 47 Los Angeles Azteca 90 E  
KLCS-DT 41 Los Angeles PBS 90 E  
KVEA-DT 39 Corona/L.A. Telem 90 E  
DT 39 was in for a tantalizing 4 secs (tropo  
scatter?? No, not really..hi...). Still some Mt.  
Wilson DTs not ever seen. SBarb DTV total is  
now 35 (2 new).

At Wasco since 1952, UHF almost by itself is  
TV broadcast in Fresno-Bakersfield region,  
which may be why there are these many  
locals/regulars on air as seen Jan 15-17, 2009  
with signals on most channels on my modest  
antennas no higher than 16 ft.

**Bakersfield** KTFB-CA4 K08MM KKEY-LP11  
KJOI-LP12(tent.) KGET-TV17/**DT25** K21FP  
KERO-TV23/**DT10** K24GS KBAK-TV29/**DT33**  
KBTF-CA31 KVPT-LP34/**K18HD-D** KBFK-  
LP36 KNXT-LP38 KABE-LP39 KZKC-LP42  
KPMC-LP43 KUVI-TV45/**DT55** K46II KBFX-  
CA58 (35-45 mi SE)

**Porterville/Visalia/Tulare** KFAZ-CA8 K15CO  
KMPH26/**DT28** KMCF-LP35 KNXT49/**DT50**  
KVVG-LP54 KTF61/**DT48** (40-80 mi NE)

**Fresno** KHSC-LP16 KVPT18/**DT40**  
KFTV21/**DT20** KZMM-CA22 KSEE24/**DT38**  
KJKZ-LP27 KFSN-TV30 KJEO-LP32 KSDI-  
LP33 KMSG-LP39 KTF6-LP41 KGMC43/**DT44**  
KGPE47/**DT34** KNSO51 KAIL53 KFRE-  
TV59/**DT36** (85-100 mi N)

**San Luis Obispo** KSBY6 (75 mi WSW)  
**Barstow** KHIZ64 (100 mi SE)

+ Tropo, not regulars: **Fresno KAIL-DT7**

**KFSN-DT9** K56DZ (100 mi N)  
+ Frequent tropo: **Modesto** KAZV-LP14  
KUVS19 (175 mi NNW)

+ In Wasco past years then bigger higher  
antennas, these weaker VHF's were regulars:  
**Springville** K07HA K09VI K11FU K13PG (50  
mi NE), **Santa Maria** KCOY-TV 12 (70 mi SW),  
**Santa Barbara** KEYT-TV 3 (90 mi SSW), **Los  
Angeles** KCBS-TV2 KNBC4 KTLA5 KABC-  
TV7 KCAL9 KTTV11 KCOP 13 (115 mi SE),  
**San Diego** KFMB-TV8 KGTV10 (220 mi SE),  
**Tijuana**BN XETV6 XEWT12 (250 mi SE).

Of all above seen, these analogs are now off  
as observed Feb 17 – Apr 11:

**Bakfld** K08MM KJOI-LP(?)12, **Fresno**  
KVPT18, **SLObispo** KSBY6, **Sp'ville** 7 9 11  
13, **SBarb** KEYT3, **SDiego** KFMB8 KGTV10.

Best of DX to all Dennis

**Fritze H. Prentice, Jr**

3275 State Highway 114W

Star City, AR 71667

email: [kc5kbv@yahoo.com](mailto:kc5kbv@yahoo.com)

web: <http://tvdxseark.blogspot.com>

There has been a change in antenna systems  
at this location. I replaced an old 4 element  
Jerrod-Delhi channel 2-13 antenna with a 10  
element Winegard YA1713 for channels 7-13.  
This has improved performance for the high  
VHF channels, but I lost low bands until getting  
up another low antenna. I decided to repair  
and install old Radio Shack VU190 that was  
previously used by my parents in their OTA  
setup. This is now my primary channel 2-6  
antenna and also for FM.

Also two distant stations (pests) were sent to  
the analog graveyard. As to paraphrase Casey  
Casem, on with the logs...

---

All Times Central Local time (24hr format)

\*New Log

March 16, 2009 Tropo

-----

2320 KSLA-DT 17 Shreveport  
2320 KLTV 7 Tyler TX  
2327 KLTV-DT 10 Tyler TX  
2328 KFXK 51 Longview TX  
2331 KCEB 54 Longview TX  
2353 KNOE-DT 8\* Monroe LA (DTV Log #124)

March 17, 2009 Tropo

-----

(morning logs)

0010 KFXK-DT 31  
0015 KSPR-DT 19 Springfield MO (off the  
BACK of the CM4228!)  
0016 KSFY-DT 28 Springfield MO  
0016 KOLR-DT 52 Springfield MO (one month  
before moving to VHF 10)

0703 KVTJ-DT 48\* Jonesboro AR (DTV Log #125)  
0712 WMPN-DT 20 Jackson MS  
0717 WDBD 40 Jackson MS (evening logs)  
2020 KTVT-DT 19 Fort Worth TX  
2021 WFAA 8 Dallas  
2029 KXAS 5 Dallas (on Winegard YA1713 !)  
2029 KETK 56 Jacksonville TX

March 18, 2009  
-----

0710 KDFW 4 Dallas (caught on Winegard YA1713!)  
0713 KUVN 23 Dallas (univision programming)

(repaired/installed RS VU190 between these logs--all 2-6 received w/190 unless otherwise indicated)

March 24, 2009  
-----

0755 WTVA 9 Tupelo MS

April 2, 2009  
-----

0015 KUHT 8 Houston TX (PBS "Charlie Rose")

April 4, 2009  
-----

0627 KAIT 8 Jonesboro AR (infomercial---rx w/RS VU190 @ NE AR)  
0627 WFAA 8 Dallas TX (GMA Saturday--rx w/Winegard 1713@ DFW)  
0930 KUHT 8 Houston TX (very weak, unstable)

April 9, 2009  
-----

0653 WFAA 8 Dallas (ad for "Vote No--Keep Dallas working ad")  
0654 KTVT 11 Fort Worth (weak and nulled out KTHV)  
0656 KERA 13 Dallas (very weak)

April 16, 2009  
-----

2235 KTAL 6 Texarkana TX Terminates Analog service--last log

April 18, 2009  
-----

2359 WABG 6 Greenwood MS Terminates Analog service--last log

April 22, 2009 (Sporadic E Skip)  
-----

1059 unid 2 (MX w/cc)  
1120 unid 2 Bonnie Hunt (first US/Canada Skip of season)  
1124 unid 2 MX--Canal Cinco with 'toons

April 23, 2009  
-----

0632 KFDM 6 Beaumont TX (local news)

0634 KBTX 4 Port Arthur TX (infomercial for "TriVita")  
0637 KLTL 18 (PBS/LPB)  
0645 XHRI 2\* Matamoros Tamaulipas, Mex (first MX tropo!)

April 24, 2009  
-----

0606 KDFW 4 Dallas ("Fox 4 News")  
0606 WFAA 8 Dallas  
0607 KXAS 5 Fort Worth (local news)  
0611 KTEN 10 Ada OK (over KTVE)  
0612 KYTV 3 Springfield MO  
0618 KHBS 40 Fort Smith AR  
0618 KAFT-DT 9 (13-n) Fayetteville AR  
0618 KHBS-DT 21 Fort Smith AR  
0633 KFSM 5 Fort Smith (pest--moderate)  
0636 KAFT 13 Fayetteville AR (VERY strong)  
0640 KTUL 8 Tulsa OK  
0646 KHOG 29 Fayetteville AR  
0653 KAIT 8 Jonesboro AR  
0708 KTVI 2 St Louis MO  
0712 WBRZ 2 Baton Rouge LA

April 25, 2009  
-----

0658 WDAM 7 Meridian MS  
0700 WBRZ 2 Baton Rouge LA  
0704 WBRC 6\* Birmingham AL (local news--new log)

April 30, 2009  
-----

0645 KKAP-DT 36\* Little Rock AR (KKAP flash cut analog to DTV, KKAP-DT is DTV Log #126)

May 2, 2009 (Sporadic E's)  
-----

1946 WBAY 2 Green Bay WI (promo for "Action 2 News")  
1956 unid 2 SS (mx?) various ads, then fading

May 3, 2009 (Sporadic E's)  
-----

1642 unid 4 NHL Hockey (NBC)  
1708 WBAY 2 (end of NBA basketball into ABC World News--STRONG)  
1717 unid 3 CBS mixing with hockey audio  
1740 CKPR 2 Thunder Bay ON ("Thunder Bay TV" promos, ads)

May 6, 2009 (Tropo)  
-----

2241 KJRH 2 Tulsa OK "Jay Leno"  
2244 KTUL 8 Tulsa "Two And A Half Men" (syndicated sitcom)  
2248 KFOR 4\* Oklahoma City "Jay Leno" (new log for channel 4/analog)  
2258 KHBS 40 Fort Smith  
2303 KDOR-DT 17\* Bartlesville OK (TBN). DTV Log#127

May 7, 2009 (Tropo)  
-----

0008 KTEN-DT 26 (10-n) Ada OK 1 HD (NBC),

2 SD subchannels (CW, wx)  
 0523 KODE-DT 43\* (12-n) Joplin MO One HD  
 stream. DTV Log#128  
 0524 KFOR 4 OKC (local news)

May 8, 2009 (Tropo)

-----  
 0654 KDFW 4 "Good Day Dallas-Fort Worth"  
 weak to moderate signal  
 0655 unid 2 infomercial  
 0656 KXAS 5 local news. weak signal  
 0702 KTVT-DT 19 "The Early Show" (CBS)  
 ("11-1" single sc)  
 0706 KDFW-DT 35 ("4-1"), wx "4-2"

May 9, 2009 (Tropo)

-----  
 0120 WBRZ 2 (Entertainment Tonight) colliding  
 with KPRC 2)  
 0120 KBTB 4 (SMC infomercial)  
 0122 KFDM 6  
 0133 WAFB 9 (over semi-distant KETG 9)  
 0135 KUHT 8  
 0155 KPLC 7 (over weak KATV 7) NBC "Poker  
 After Dark"

May 12, 2009

-----  
 0800 KARZ 42 Little Rock terminates analog  
 service

May 13, 2009 (Tropo)

-----  
 0642 KDFW 4 Dallas  
 0646 KTXH 20 Houston  
 0658 KRIV 26 Houston  
 0659 KMPX 29 Dallas  
 0711 KPRC 2 Houston  
 0713 KFDM 6 Beaumont TX  
 0716 KBTB 4 Port Arthur TX  
 0718 KFWD 52 Fort Worth  
 0719 KPLC 7 Lake Charles LA  
 0719 KUHT 8 Houston

Three analog stations left the air in the area:  
 WABG 6 Greenwood MS (4/18/2009)  
 KKAP 36 Little Rock AR (4/30/2009--flash cut  
 to DTV)  
 KARZ 42 Little Rock AR (5/12/2009)

Full power analogs remaining in area as of  
 May 15 are:  
 KATV 7 Little Rock(ABC), KETG 9 Arkadelphia  
 AR(PBS/AETN), KTVE 10 El Dorado AR  
 (NBC), KTHV 11 Little Rock (CBS), KLRT 16  
 Little Rock (Fox), KEJB 43 El Dorado AR  
 (MyNetwork)

**Jeff Kruszka**, 1909 Lost Lake Pl.  
 Pearland, TX 77581

August 2008

2 Es	1040 WTAE	4 PA	1148
	1050 WUNC	4 NC	1036
	1058 WBTV	3 NC	918

	1229 WAVE	3 KY	836
9 Es	0952 WMAZ-DT	4 GA	733
	1108 WUNC	4 NC	1036
	1128 WBTV	3 NC	918
	1150 WTAE	4 PA	1148
	1158 WPSU	3 PA	1234
	1208 WJAC	6 PA	1182
	1714 WEDU	3 FL	804

January 2009

25 Es	1900 KTVK	3 AZ	"A Analog" UR1014
26 Es	1522 WBRC	6 AL	567
	1523 WYFF	4 SC	831
	1557 WREG	3 TN	505
	1600 WTAE	4 PA	1148
	1613 WSIL	3 IL	665
	1859 WPSU	3 PA	1234
31 Es	2007 unid 3-6 SS		

February 2009

7 Es 1840 unid 3-6 SS

March 2009

17 tr	1922 KLTU	7 TX	205
	2039 KETK	56 TX	166
	2043 KSLA-DT	17 LA	230
	2046 KYTX-DT	18 TX	161
	2316 KBTX-DT	50 TX	77
18 tr	0706 KNVA-DT	49 TX	152

April 2009

3 tr	2056 XHAB	7 TA	287
22 tr	0713 WGNO-DT	15 LA	328
	0717 WPXL-DT	50 LA	323
	0729 KRHD-LP	40 TX	98
	1958 unid SS 3!		Note 1
	2120 XHOR	14 TA	287
	2134 KVHP-DT	30 LA	120
	2139 WDSU-DT	43 LA	327
	2157 WGNO	26 LA	floating o/local 323
	2202 WPAN-DT	40 FL	Note 2 529
	2220 WWL	4 LA	floating o/local 314
	2308 WAPT	16 MS	local nx 355
	2355 KTLM	40 TX	295
	2359 XHTMA	17 TA	2 <sup>nd</sup> SS o/KNIC
23 tr	0712 KXAM	14 TX	211

Note 1 – Turned on the TV to hear SS on ch. 3;  
 assumed it was Es until I found  
 all of the VHF channels filled with strong tropo.  
 It never got strong enough thru  
 KIII to make out a logo, although the audio was  
 strong for about a ½ hour. From  
 the direction, it's likely it was XHCVT Cd.  
 Victoria, TAM.

Note 2 – Thought this was New Orleans until I  
 saw a Crestview, FL jeweler paid  
 program. No psip seen on the Insignia.

Totals up to 180. Not bad for a city with a  
 loaded TV band. Can't wait for 6/12!

73's, Jeff

# 6 Meter/2 Meter Amateur DX



50 Mhz  
The *Magic* Band

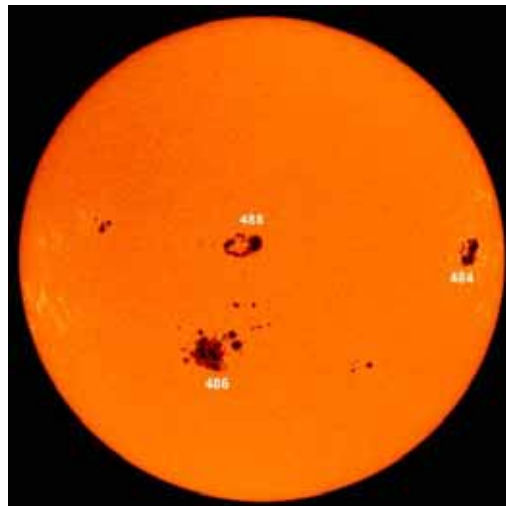


**Peter Baskind, N4LI**  
**3225 Forest Hill-Irene Rd**  
**Germantown, TN 38138**  
**N4LI@ARRL.net**

The Solar Cycle has been a favorite topic in the amateur radio community for the past few years. Most of us have been waiting out what seems to be an unusually low solar minimum, hoping for Cycle 24 to begin in earnest.

On 6 meters (50 MHz), the solar peak can mean much-anticipated F2-layer propagation and very long distance QSOs. When the solar flux gets really high -- an SFI of 200, or better, seems to be the benchmark -- easy contacts into Europe, and even worldwide can happen. But, even in a robust cycle, those heady times only last a year or two. We haven't seen numbers like that since the solar storm of late 2003 that left the sun pockmarked with some very impressive-looking sunspots.

Our Sun, in October,  
2003 with the massive  
sunspots labeled.  
SOHO image.



More recently, the sun has been clean -- like a new, orange Frisbee, right out of the shrinkwrap, and F2 has been totally absent on VHF.

Finally, it seems, there is some agreement about where the Sun may be headed. Recently, solar scientists from all over the world met in Colorado to discuss the upcoming Cycle 24 and to explore what it might be like. What resulted was a good news/bad news sort of thing.

The good news is that we may have, indeed, passed solar minimum. If current thought is correct, that happened in December, 2008, almost 2 years later than conventional models would have expected. That means, of course, that new spots should start appearing and SFI will increase along the way. But, there was bad news, too. They predicted Cycle 24 will be anemic, possibly only a bit stronger than sleepy Cycle 16 in the 1920s. So those hoping for a repeat of the amazing conditions of Cycle 23 on 6 meters may be disappointed. Dang.

There is always hope, of course. Predicting solar cycles is far from a precise science. And, solar storms can pop up unexpectedly. The 2003 solar storm came well after what was considered the peak of Cycle 23. That storm brought some amazing VHF conditions (including 2 days of incredible openings between Hawaii and North America on 6m and even TV channel 2). So, we can always hope!

\* \* \*

The sporadic-E season has begun. The first widespread 6m opening was noted in the Southern United States the weekend of May second and third. Much to many operators' delight, Yuri, UT1FG, was mobile in his ship that weekend, working his way through the Gulf of Mexico. Usually unworkable "wet" grids – those that are entirely water – were on-air for this short period as he transited through. I was lucky to catch Yuri (in order) in all-wet grids EL33, 32, 22, and 21. I also worked him in-port in EK19, another new grid. Some lucky 6 meter guys worked OA4TT in rare Peru that Sunday. Sadly, I wasn't home, and missed it. I'll get him next time!

Tropo has really been running along the Gulf Coast over the past few weeks. We have all seen the fabulous loggings of some WTFDA TV and FM DXers. That same opening brought some great 2m+ contacts, too. Those living close to the water have been almost overwhelmed with signals crossing the entire Gulf day after day. One ham in EM70 told me of his excitement in working his first 2m (144 MHz) Mexican ever via this opening, making the trip from Tallahassee to EL03. That's a good haul, indeed.

Here in Memphis, I got a taste of the opening the morning of April 23<sup>rd</sup>. After seeing that my home APRS station was full of stations to the south, I was able to work 2m SSB into spots like New Orleans, Orlando, Tampa, and Pensacola. I was thrilled to finally knock out EL86, a South Florida grid with just a small spit of land. While the signal from N3LL/4 was not at all strong, it was a clean, complete contact at just over 700 miles. The QSL card went off that afternoon.

May 7<sup>th</sup> brought quite a surprise into Memphis. Although there were some indications of tropo that morning, the opening looked lackluster, indeed. Still, the cluster showed K5YC/DM82 in extreme eastern New Mexico working as far as eastern Oklahoma. A bit later, his signal popped up here in Memphis – up to S5. After calling several times, and with a little help from Sam, K5SW, in EM25 who could hear both of us, I was able to get K5YC's attention and New Mexico logged for a new state.

\* \* \*

The June VHF Contest is less than a month away. Last year's contest was *mass hysteria*. Conditions for the first day were simply unbelievable with contesters working stations literally as fast as they could run the logging programs. Will that happen in 2009? We won't know until that weekend, but get your stations ready. This contest is always fun! Full rules can be found here: <http://www.arrl.org/contests/rules/2009/june-vhf.html>

**K5AH**

Ed Hoffman  
20062 Rocquin Lane  
Ponchatoula, LA 70454 USA  
Tangipahoa Parish Grid EM40  
plicker@bellsouth.net

TO RADIO				
NYLI				
DATE	UTC	MHZ	2-WAY MODE	RST
23, 09	11:15	144.2	USB	5/6
<input checked="" type="checkbox"/> PSE <input type="checkbox"/> QSL <input type="checkbox"/> TNX				

QuikCards www.quikcards.biz

# THE YEAR THE METS WENT ALL THE WAY

Jim Renfrew

It was 1969, I'm sure, the year the Mets went all the way. It was the first year I had ever followed a team, all the way through the season from start to finish. Just my lucky break that it was the Mets I chose in that that year of all years. My mother was a Yankees fan, totally ignorant of the fine points of the game, but able to swoon over the names of Mantle and Ford, and, of course, countless World Series victories. My Dad knew all about the game, but the victories were few and far between for a man born in Pittsburgh. So he was an underdog kind of guy, and living in the New York City area he gravitated toward the Mets, and I followed him. So of course when my family went to northern Vermont for summer vacation to my grandmother's cottage on lake Carmi, I took a little black and white portable TV. Everyone else in the extended family was jammed into the main cottage, but I was assigned a little bunk house on the other side of the driveway. It was my own little TV den. Reception stunk with just the whip on the back of the set. But I remember clicking around the dial for the Burlington and Montreal stations, trying to find snowy Mets games at the end of July. I was 15 and knew nothing about VHF propagation, although I was already a serious medium wave DXer, so it was a major surprise to tune into WDAF from Kansas City one afternoon.

During college I completely ignored TV in favor of studying and partying. TV reception in the Chenango Valley was terrible, so there was little inducement to watch. And I knew nothing about TV stations or prime-time programming. But there was one night the house TV was on and I saw an ID slide for a station in Cincinnati! Wow, just like that reception of WDAF.

I didn't learn what it was I had seen until I got interested in FM around 1987 or so and wrote away for a free copy of the VUD. E-skip! I'd had no idea. So I went up to the attic that July day where I had a TV with rabbit ears in my office and gave VHF a try and immediately got Louisiana on 2 and 3. Sure looked easy on my first try.

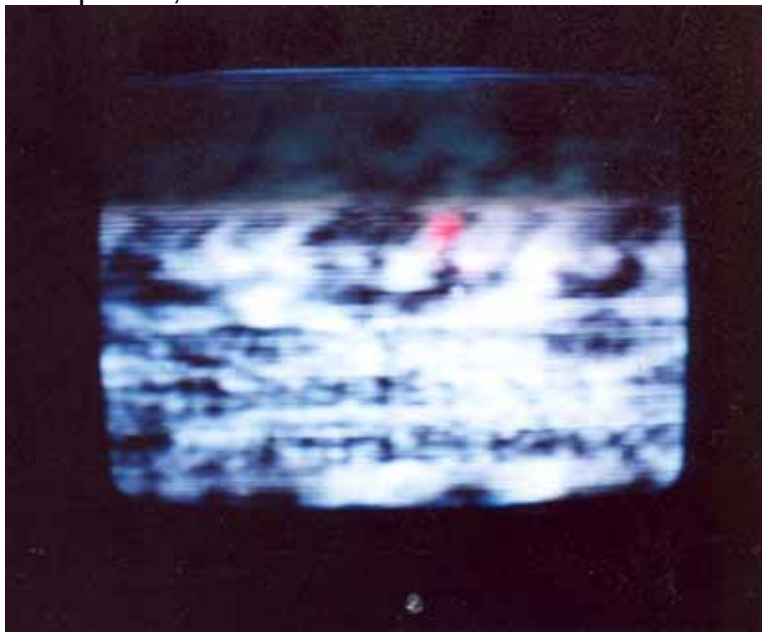
So WDAF was my first experience of E-skip ... and Cincinnati? Turns out that was WKRP!

PS - Probably my best moment for analog TV DX was when I was visiting my parents in North Carolina, before they replaced the rotor with cable, and I saw the Dominican Republic on two channels, and probable Venezuela on channel 3, my only double-hop TV DX.

# THE MOST AMAZING GARBAGE ON CHANNEL 2

Mike Bugaj

Now I don't even pretend to be in a class with other TV DXers. To be honest, when skip goes into FM I run from the television to the FM tuner. And when tropo shows up, you know where you'll find me, and that's at the radio. But on December 31<sup>st</sup>, 2004 I woke up, got out of bed and, as usual, turned on the computer to read the tvfmdx list. And what I read made me turn on the TV and look. And what I saw was something I've never ever seen before and probably never ever will see again, and that's F2 skip on channel two. The picture on the left is a picture I took with a 35mm camera. I ran upstairs, found the camera and ran back downstairs to the basement to take pictures.



This is F2 reception on channel 2. Lovely, isn't it? I think so.

So, what is it? I don't know and I don't care. All I know is it came from some place out there and it was a form of propagation I've never experienced. The general agreement is that it came from the Caribbean or South America. It could have come from the South Pole for all I care. I watched it for hours on the 31<sup>st</sup> and when the New Year began on the 1<sup>st</sup> it came back again for another session. The pictures still hang on the pegboard in my basement for me to marvel at. Will any of us see this again in our lifetimes?

Time moves on, and now it's July 6, 2004 and there's one heck of an Es opening



KATV 7 Little Rock. Sometimes you just get very lucky.

going on TV and FM. The skip is so heavy on FM that it's almost impossible to ID any stations. So for the heck of it I turn to channel 7 to see if anything is there. And something is there! It's 7pm and I'm seeing commercials and an ID slide for KATV 7 in Little Rock. Luckily the camera is nearby and I start taking pictures and watching channel 7 News. I was in shock. Next I found a PBS station skipping in on channel 9. I took more pictures. After some time channel 9 disappeared and channel 7 went along with it. But I had the photos, and that's what I wanted.

I consider myself very lucky to have seen what I've seen. For me, those were the days. They weren't that long ago, but these two receptions are ones that will stay in my mind for as long as I live. Bye bye, analog.

## WOW, IS IT REALLY OVER?

Jeff Kruszka

Wow, is it really over? I can still remember my first E-skip reception like it was yesterday. It was the summer of 1980 in Elyria, OH, I was 16 years old, and I had already been active in AM and shortwave DXing for a couple of years after my parents bought me a JC Penney (!) 8-band radio for my birthday. I was aware of tropo propagation somewhat already on TV, and had discovered the VUD I think through the WRTVH, and sent away for a sample copy. I remember reading that VUD and seeing all of these reports with shorthand and abbreviations I didn't understand, but it intrigued me and I immediately wanted to be one of the "pros."

I was amazed to read that people would pick up really long distance stations via this mode called "E-skip". So I started checking ch. 2 periodically to see if I could get this mystery mode as well. One night in May or June 1980, about 11:20 pm EDT, I finally saw WESH-2 fade in with local news on my Sylvania 12" B&W TV with rabbit ears. I had done it! I was so excited I ran downstairs to tell my parents, who reacted with a ho-hum "that's interesting, Jeff" attitude. Undeterred, I continued to search for stations, and here we are today. So unlike a lot of people who I've read discovered E-skip "accidentally," I discovered it only after reading that it existed and then went looking for it.

Of course the greatest DX experience for me had to be the prolonged super Gulf tropo extravaganza of May, 1998 (from Baton Rouge). This was a once-in-a-lifetime, never to be repeated event that most DXers could only dream of. I'm talking 500, 600, even 700 mile tropo for days on end for nearly the entire month (including one span of 15 days in a row!). And it was in every conceivable direction, something different every night. A lot of these stations I received only one time, during this opening. I lost a lot of sleep that month, but it was worth it!

Getting 800+ mile tropo to N. Carolina the night of 5/11/03 was also a jaw-dropper (it came out of nowhere), but I have to confess it was actually more exciting to see it on DTV since I had just installed my WinTV-D card less than one month earlier. What great timing that was!

### WTFDA EMAIL REFLECTORS

Enhance your DXing experience! Entertaining and informational.

*For WTFDFA members! Sign Up Today!*

The WTFDFA list with 190+ users...send an email to [tvfmdx-subscribe@wtfda.info](mailto:tvfmdx-subscribe@wtfda.info)

The WTFDFA AM DX list with 90+ users...send to [amdx-subscribe@wtfda.info](mailto:amdx-subscribe@wtfda.info)

# ROBERT GRANTS TOP TEN DXING SESSIONS

**#10 July 6, 2004 super opening.** I was in the right time, but the wrong place. I had a typical signal from KXAS-5 fade out, but minutes later, I was surprised to see a strong stable signal from KYW-3 (at only 451 miles, the shortest Es from Temperance). This continued for about 10 minutes, after which ALL HELL broke loose. WPVI-6 from the same tower joined KYW, a digital TV signal wiped out WDIV on channel 4 (at the time, this had to be WHP in PA or WDKY in KY, both obscenely close for Es). Soon the lowband was riddled with interference. I went to FM, only to find that every FM East of The Mississippi River must have been trying to come in. The interference on FM was so great that only about 4 FM stations were audible - Monroe's Class A WTWR (then) at 4 miles, and the few stations in Toledo that were full power class B (Yes, Toledo Class As were wiped out). I got on 2m SSB and Worked a ham in South Carolina (very close for 2m Es). I "knew" that people who where not directly under the Es "cloud" like me must be getting highband Es (I was right). I spent most of the evening on 6m talking to hams in PA and NY on my handie talkie.

**#9 February 25, 2008 sporadic-E opening.** If ANY E-skip in February is something to remember, consider a strong opening, lasting about 3 hours, stretching from Little Rock to Matamoros, Mexico. In this opening I saw KARK-4 by skip, thus finally getting the same station by skip as well as tropo.

**#8 Newfoundland openings.** at 2315 EDT, June 23, 1981, a weak CBC floated in on channel 3, and at first, I assumed this was CBHT again, but I thought the carrier beat against WKYC looked a little different - and it was - CBAFT1 in Baie Verte, Newfoundland. The QSL card impressed my mother, both of whose parents were "Newfies". Getting an about 1300-mile station with 500 watts of transmitter power (3.4 kW ERP, since upgraded) is what impressed me. 29 hours later, Es opened up to Newfoundland again, and I got CJCN-4 in Grand Falls just before WDIV turned their transmitter back on.

**#7 Super opening of July 17, 1980.** I was up North (near Honor, MI, on vacation), and had been lamenting the lack of Es on this vacation so far (compared to the year before). On the 17th, I turned on the TV, and things were booming, with tons of stations interfering with each other. I went to FM (which I could DX up there with little local interference back then), and got a station in West Virginia on 107.9 (quite close), logging about 60 FM stations by Es overall (more than any opening before or

since). This was the first of only 2 times I observed Es on VHF highband TV. Sadly, WPBN-7 was too strong to null out, and I could not identify the minus offset station trying to come in.

**#6 WTFDA Nashville '93 Convention tropo opening.** We had been seeing some tropo on all of the radios, TV sets and antennas that had been set up on the penthouse of the Days Inn Central. Soon after local PBS WDCN-8 signed off, KAIT in Jonesboro took over the channel. I had been watching KAIT for some time, and the other DXers were wondering why I was staying on it. I was actually looking at what was interfering with it - a station that was zero beat, and this zero offset, and hoping to see an ID or local ad on -it- (BTW, KAIT has since switched to minus offset, god knows why). I knew that this station had to either be off-frequency by precisely 10 of 20 KHz (rare), a translator, or something far away (Like Moline or Dallas). Later that night, when more stations started signing off, we got a lot of stations from Eastern Texas, including WFAA as I had suspected.

**#5 KREM-2, 1702-mile Es, 0320 EDT July 11, 1981.** Another memorable "late nighter", in the last years that locals WJBK and WDIV signed-off every night. unIDs had come in earlier in the evening, then this one came in with a lot of ghosting showing a Charlie Chan movie marathon. I went to channel 4 and saw a Pacific time ABC station (I'll never know if this was KOMO or KXLY), went back to channel 2, and they had started another movie. Fortunately, Paul Gaines across town had been getting the same thing, had not checked channel 4, and got the ID. These were the days for late-nighters, as the occurred the previous morning and again three mornings later.

**#4 RCTV Venezuela on 3** (this would have been far more memorable if I had known what I was getting at the time!) I had been listening mobile to channel 3, and heard a strange carrier that was varying in frequency (generally a sign that this is not a typical US station), went to the audio and heard promos in Spanish identifying the station as what sounded like "Tu ere zeta vay" ("your RZV"). I made it home, and saw the same channel, with a Spanish dub of "Baywatch" and a distinctive logo (but too much ghosting to make out the letters). Minutes later, WEDU faded in and took over the channel. I could not find any network called "RZV" or "RZB". Later I was talking to some hams in the area, and someone mentioned that they had heard



Venezuela on 6 meters. Then it hit me - it wasn't "ere zeta vay", rather "ere seh teh vay" - RCTV. I went to the RCTV website and saw the logo! I went to their schedule, and found they carried "Baywatch VII" at the time. My longest E-skip and longest FM TV audio - and I did it mobile!

### #3 December 11, 1983 sporadic-E opening.

This opening was discovered shortly after midnight and lasted several hours. The real surprise was when I saw ID slides and test patterns of nearby channel 5 stations WMAQ, WEWS and WNEM - all on channel 3! A channel 3 station was "DXing" the channel 5 stations by Es and repeating them (By very complicated means, it has been determined this was CFSS in Warmley, SK, today it is satellite-fed CBKT7). I was sure nobody would believe me when I said I saw this (to this day, I meet people who insist this was impossible), but Bill Draeb in Wisconsin saw it too!

### #2 First time hearing BBC 1 TV audio by F2 skip, December 2, 1979.

I had read about the sunspot maximum, and about the

potential for strong signals by F2 skip in the VUD. Then I started reading that several people were hearing BBC 1 on 41.50 MHz, and decided to try it myself. So I got out my Astronaut-6 portable radio, pulled up the telescoping whip, and there it was! Note that I once thought that Toledo at 56.82 miles was "DX", then, as the spring and summer of 1978 went along, I got progressively more distant stations by tropo - Cleveland, Youngstown, Erie, Wilkes-Barre. I never dreamed at that time I would be bagging a TV signal from across the Atlantic only a year and a half later.

### #1 WEDU-3 (and tentative WUFT-5) by Es, May 22 1979 (30 years ago today).

This was actually only a typical "skip" opening, but this was the first time I was using Es and knew what was happening (In retrospect I know I had noticed "venetian blinds" on low-VHF a few times earlier). Only a year earlier, I had always assumed 1000-mile DX would need a very big and expensive antenna, and to see these strong, fading signals, in color on the old RCA CTC-38, with rabbit ears, was amazing at the time. WEDU, of course, would be seen hundreds of times again.



By ROBERT COOPER, JR.

Confusion! This one noun would appear to summarize the total state of dx during the last few months. Sporadic E skip hit the whole country with a fury not seen

since the summer of 1954. Areas such as the Northwestern States found themselves the recipients of more skip in a single 2-week period than they would normally get in a while summer. This was especially apparent in the field of double-hop E reception over distances of 2,000 miles or more.

Station call letters even added to the problems of the dx enthusiast. The call KTCA first began to show up on channel 2 on the night of May 22, being seen over a wide area of the Mid-Atlantic States. Master call-letter lists showed this station was on channel 4 in Hawaii! Imagine the elation that must have followed this logging, only to learn later that the station really is on channel 2, but in Minneapolis, Minn. Even the FCC can be confused when issuing call letters.

During many of the better E-skip openings, dxers found so many stations skipping in on the lower channels that station IDs were all but impossible for hours on end. The comment of Robert H. Gordon of Harrisburg, PA, with his log of May 22 is quite typical of those received: "There were too many

stations coming through at the same time—impossible to log." Believe it or not, there are times when dx can get just a bit too good.

Leon Henner of Riverdale, ND notes dx reception in full color on June 3 from station KTBS Shreveport, LA. Although I am sure this is not a first, it is the first reported instance we have of good quality color dx reception.

Problems with reception of television stations "south of the border" cropped up again this summer. New stations in Cuba and Guatemala were reported over wide areas. Station TGBOL on channel 3 appears to be originating from Guatemala City, Guatemala. It is reported as received on many points along the Gulf Coast.

In response to our plea for any unusual reports of reception from the south on May 1-2, dxer *Doris Johnson of Longview, WA* notes *fading signals from the southeast, channel 2, 1602-1612 with Spanish or Portuguese audio but no video that would sync in. Doris also reports that on May 8, 1101-1103, while receiving KNXT, channel 2, Los Angeles, foreign audio overrode the Los Angeles sound.* Amateur 6-meter enthusiasts report much unusual activity toward South America on May 1, 2 and 9. It is the general belief that most of this activity was a result of a combination of E and F2 layer activity.

High station totals continue to climb – dxer Bob Seybold has reached the mark of 300 television stations logged.

The above column was reprinted from Radio-Electronics, September 1957



By ROBERT COOPER, JR.

### '57-Good in Spots.

The year 1957 proved very interesting to all long distance television fans.

Generally speaking the summer E-skip conditions over the North American continent left much to be desired. For the first year in many, very few existing records were broken, perhaps indicating that even the limits of TV dxing have almost been reached. However, some of the new records set this year may be only stepping stones to better things to come in 1958.

Riding the peak of the sunspot cycle, the world's record for television dxing was pushed out to 10,800 miles with the reception of England's BBC channel 1 in various parts of Australia. Here in the Western Hemisphere, the high-band (channels 7-13) television dx record was extended to approximately 2,300 miles on Aug 2, 1957 at 1900 CST, with the logging of the YVLV relay on channel 9 from Maracaibo, Venezuela by dxe Bobby Grimes in Little Rock, AR. Two hours later, an old pro, Bedford Brown of Hot Springs, AR logged the channel 9 station along with reception from Venezuela on channels 2, 4 and 5; Brazil on channel 2 and Argentina on channel 3.

A triple-hop channel 5 E-skip logging is noted in the report of Mrs. Doris Johnson of Longview, WA. She reports a verification in writing for her reception of WORA, channel 5, Managues, Puerto Rico at 19145 PST on July 21 of last year- the distance, a neat 3.650 miles. Being a west coast dxe I checked my log for this date and found a weird notation for 1720 hours on channel 3 - a Japanese movie with Spanish subtitles! What you don't run into during a bang-up opening! (From Radio-Electronics January 1958).

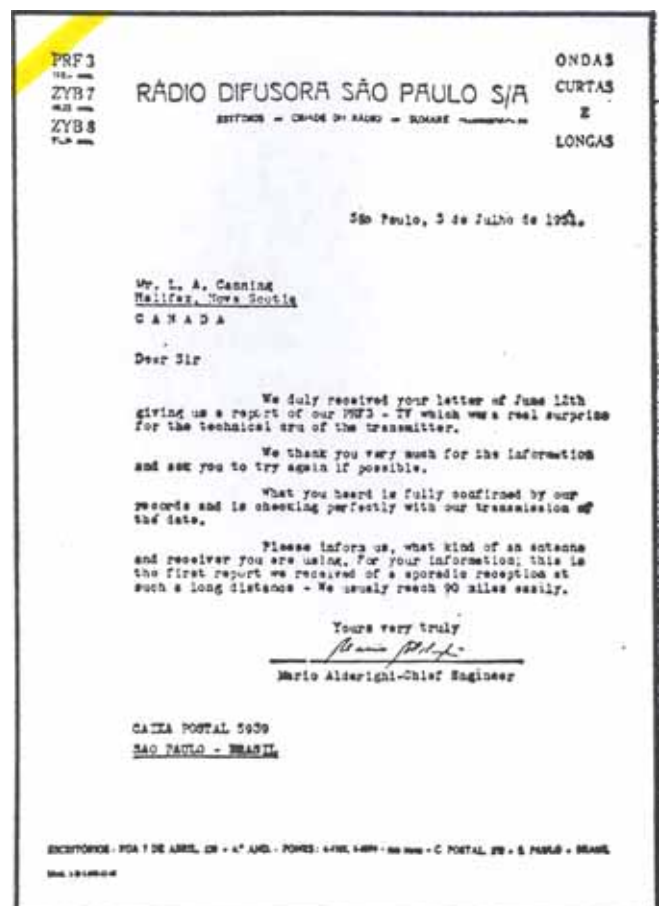
### F2 surpasses 1957-8 season

Readers of the June 1958 TV DX column will remember reports carried of the first F2 television dx reception between the East and West Coasts of the US. Several dxers in Oregon, Washington and extreme northern California logged Maine, New York and New Brunswick channel 2 video signals during Jan 1-9 1958.

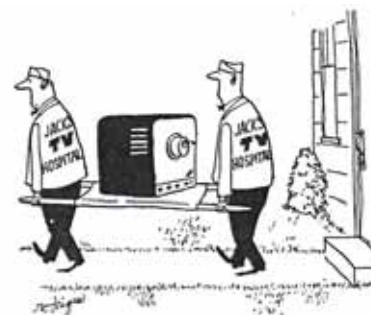
In the third week of October, 1958, F2 conditions were improving at such a rapid rate that Amateur Radio 6-meter (50-54mhz) enthusiasts were making two-way contacts of a transcontinental nature on an almost daily basis.

As the maximum usable frequency (muf) continued to rise, lines and other signs of video information began to be noticed on channel 2

by alert California dxers for a few minutes each day during peak periods, and have been reported by dxers on Nov.7,11,12 and 22. On the morning of the 23<sup>rd</sup>, Rick Stauduhar, Carmichael, CA, found channel 2 jumping with fast fading, highly distorted video signals from 0850-1005 hours PST. But the morning of the 24<sup>th</sup> proved to be the cincher. Your column conductor was caught away from his dxing setup in Fresno, CA, but managed to make a hastily erected dipole of 300 ohm twin lead deliver a very watchable signal from WCBS-TV, channel 2 New York from 09010-0947 hours PST, in San Jose, CA. It was interesting to note that an outside antenna (double-stacked all channel yagi) produced such severe video distortion that watching the picture was not possible. (from the March 1959 Radio-Electronics).



This is a verification letter from PRF3-TV in Sao Paulo, Brazil sent to a Mr. Canning of Halifax, Nova Scotia verifying his reception of PRF-3 via multi-Es at a distance of over 5,000 miles.



RADIO-ELECTRONIC

The analog TV in the cartoon is DOA and is being taken to the analog TV morgue. And so an era ends.

## SIGN UP/Renewal form

Name \_\_\_\_\_

Address \_\_\_\_\_ Apt # \_\_\_\_\_

City \_\_\_\_\_ State/Prov \_\_\_\_\_ Zip \_\_\_\_\_

Country \_\_\_\_\_ Interests: TV ( ) FM ( ) 30-50( ) Weather( )

email address \_\_\_\_\_

Sign me up/renew me for: 1 year ( ) 2 years ( ) More ( )

Yearly dues \$24 (US), \$26 to (CANADA), \$10 (Electronic VUD)  
 (Students get a discounted rate of \$15 yearly for the paper VUD.)

**Mail your dues to: WTFDA, P.O. Box 501, Somersville, CT USA 06072**

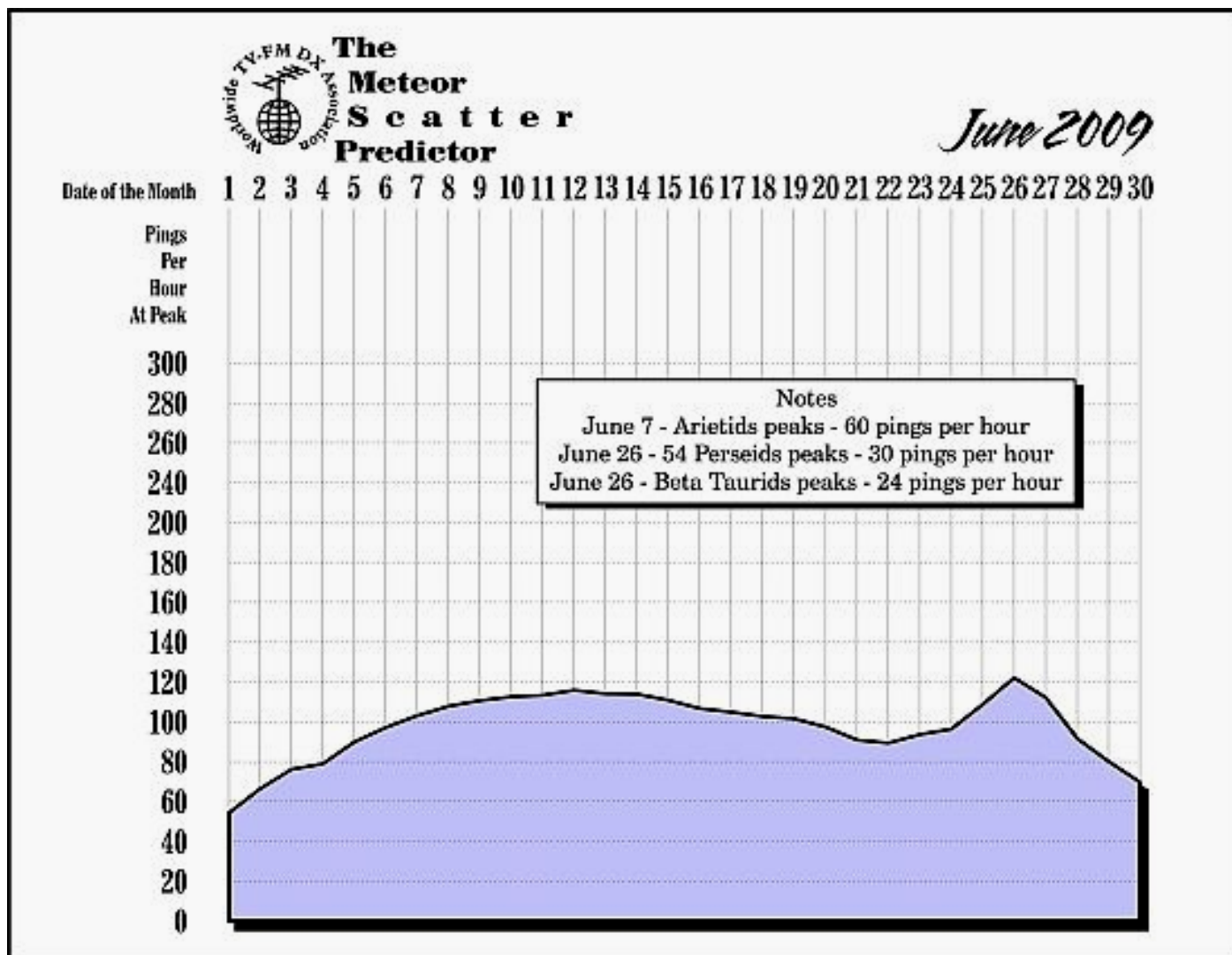
**Make your checks/money orders payable to: WTFDA**

**And *thanks* for your support of the WTFDA!**

Return this form with your dues or make a copy of it and return that.

## METEOR SCATTER CHART FOR JUNE 2009

BY JIM THOMAS



**THE WORLDWIDE TV-FM DX ASSOCIATION  
THE VHF- UHF DIGEST  
P.O. Box 501, SOMERSVILLE, CT 06072**

Opinions expressed in this publication are those of the individual contributor and do not necessarily reflect the views of the publisher or board of directors. We reserve the right to edit material to meet publishing standards. Unless previously agreed upon in writing, all material submitted for publication in the VHF-UHF Digest becomes the property of the WTFDA. Reproduction of material from the VHF-UHF Digest without permission of the WTFDA is prohibited. Individuals and other organizations are granted such permission providing proper credits is given to the source.



***Established 1967***



## **FIRST CLASS MAIL**

**NOW! JOIN AND RENEW USING PAYPAL!**

Now you can pay for your dues by check, money order and ONLINE with Paypal! If you have a Paypal account you'll be done in a matter of seconds! Pay at our Paypal webpage at <http://www.wfda.org/join.html>.